

WAAS CH <b>93917</b> <b>W14A</b>	APP CRS <b>133°</b>	Rwy Idg TDZE Apt Elev	<b>4600</b> <b>984</b> <b>987</b>
--	------------------------	-----------------------------	---

# RNAV (GPS) RWY 14

NORTHERN AROOSTOOK RGNL (FVE)

RNP APCH - GPS.

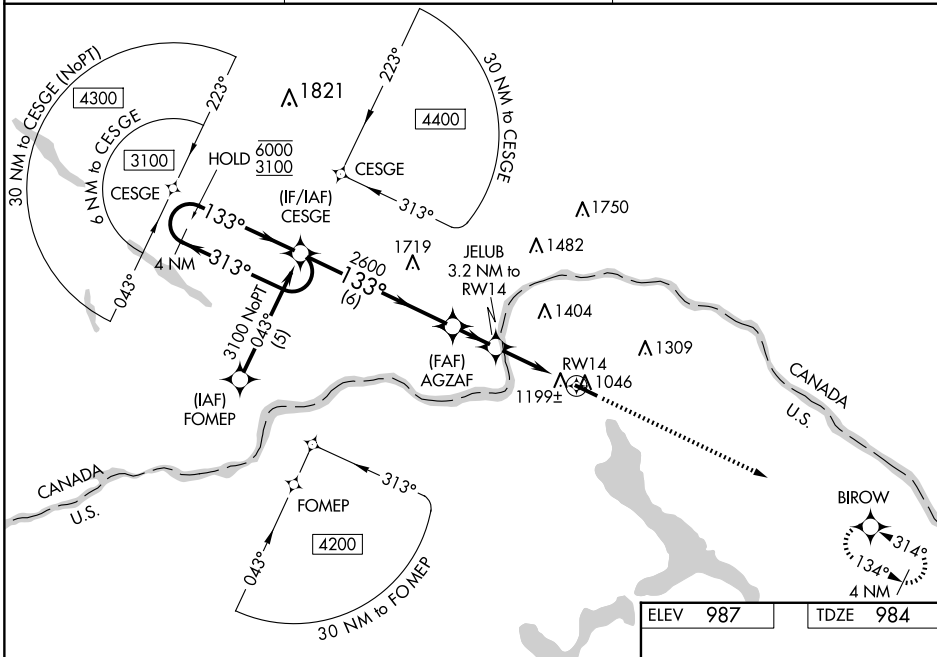
⚠ For uncompensated Baro-VNAV systems, LNAV/VNAV NA below -16°C or above 54°C. Rwy 14 helicopter visibility reduction below 3/4 SM NA. Baro-VNAV and VDP NA when using CAR altimeter setting. When local altimeter setting not received, use CAR altimeter setting and increase LPV DA to 1386 feet, LNAV/VNAV DA to 1635 feet and all MDAs 120 feet. Increase LPV all Cats visibility 1/2 SM, LNAV Cat C visibility 3/4 SM, Cat D and Circling Cat D visibility 1/4 SM and Circling Cat C visibility 1/2 SM.

MISSED APPROACH:  
Climb to 3000 direct BIROW and hold.

ASOS  
**135.725**

BOSTON CENTER  
**124.75 239.05**

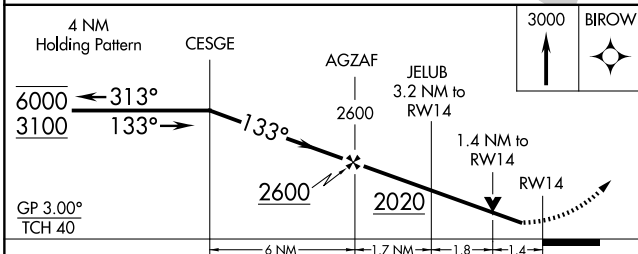
UNICOM  
**122.7 (CTAF) 0**



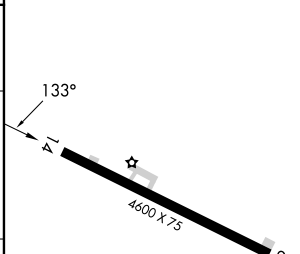
NE-1, 15 MAY 2025 to 12 JUN 2025

NE-1, 15 MAY 2025 to 12 JUN 2025

ELEV 987	TDZE 984
----------	----------



CATEGORY	A	B	C	D
LPV DA		1270-1	286 (300-1)	
LNAV/VNAV DA		1519-2	535 (600-2)	
LNAV MDA	1460-1	476 (500-1)	1460-1 1/2 476 (500-1 1/2)	1460-1 1/2 476 (500-1 1/2)
<b>C</b> CIRCLING	1560-1 573 (600-1)	1580-1 593 (600-1)	1840-2 1/2 853 (900-2 1/2)	1840-2 3/4 853 (900-2 3/4)



MIRL Rwy 14-32 0  
REIL Rwy 14 and 32 0