

WAAS CH 65639 W19A	APP CRS 184°	Rwy Idg TDZE Apt Elev	4003 620 620
----------------------------------------	------------------------	-----------------------------	-----------------------------------------

RNAV (GPS) RWY 19

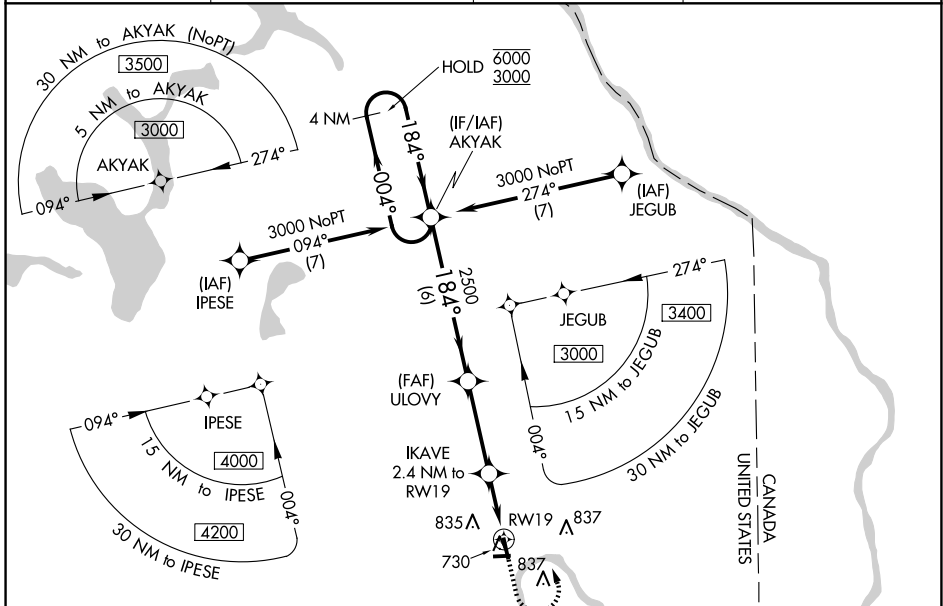
CARIBOU MUNI (CAR)

RNP APCH.

⚠ Baro-VNAV and VDP NA when using Presque Isle altimeter setting. Rwy 19 helicopter visibility reduction below 3/4 SM NA. For uncompensated Baro-VNAV systems, LNAV/VNAV NA below -21°C or above 54°C. Circling Rwy 1, 11, 29 NA at night. When local altimeter setting not received, use Presque Isle altimeter setting and increase all DAs 49 feet and all MDAs 60 feet. Increase LNAV Cats C, D visibility 1/8 SM and Circling Cat D visibility 1/4 SM.

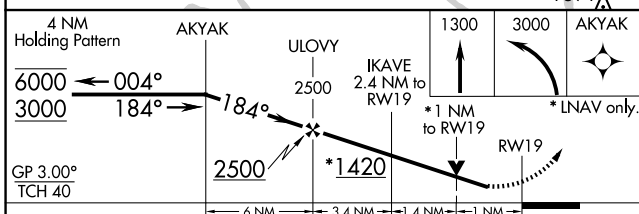
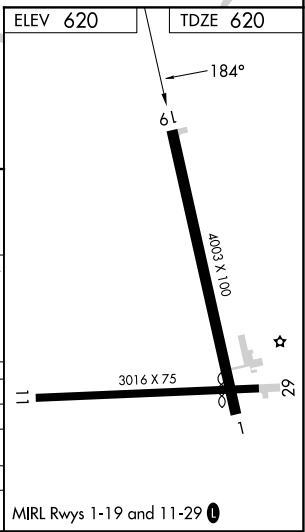
MISSED APPROACH:
Climb to 1300 then climbing left turn to 3000 direct AKYAK and hold.

ASOS 135.125	BOSTON CENTER 124.75 239.05	CLNC DEL 124.75	UNICOM 122.8 (CTAF) 0
------------------------	---------------------------------------	---------------------------	---------------------------------



NE-1, 15 MAY 2025 to 12 JUN 2025

NE-1, 15 MAY 2025 to 12 JUN 2025



CATEGORY	A	B	C	D
LPV DA		870-1	250 (300-1)	
LNAV/VNAV DA		894-1	274 (300-1)	
LNAV MDA		980-1	360 (400-1)	
CIRCLING	1140-1	520 (600-1)	1140-1 1/2 520 (600-1 1/2)	1400-2 1/2 780 (800-2 1/2)