

LOC/DME I-BXM <b>109.3</b> Chan 30	APP CRS <b>012°</b>	Rwy Idg <b>8000</b> TDZE <b>63</b> Apt Elev <b>75</b>
--	------------------------	---

# ILS or LOC RWY 1R

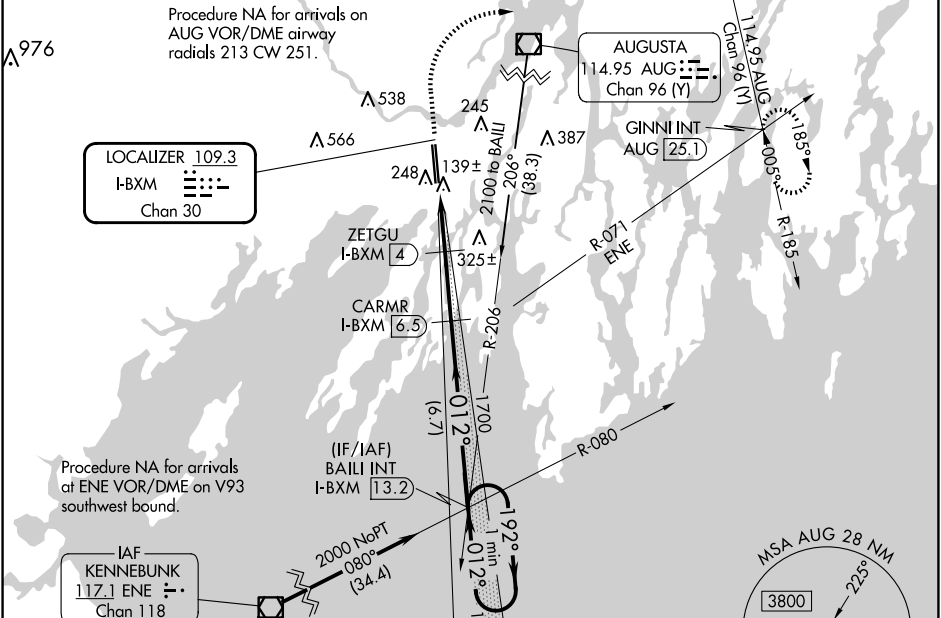
BRUNSWICK EXEC (BXM)

**NA** DME required. VDP NA when using Portland altimeter setting. When local altimeter setting not received, use Portland altimeter setting and increase S-ILS 1R DA to 314; increase all MDA 60 feet; increase S-LOC 1R Cats C/D visibilities 1/2 SM and Circling Cat C/D visibilities 1/4 SM.

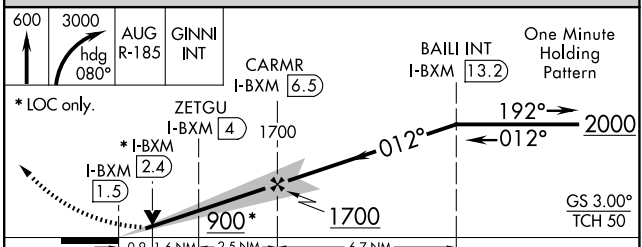
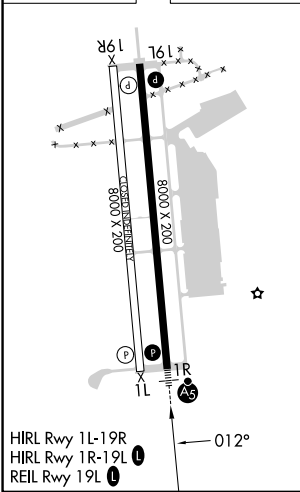
**MALSR**  
**AS**

**MISSED APPROACH:** Climb to 600 then climbing right turn to 3000 on heading 080° and AUG VOR/DME R-185 to GINNI INT/AUG 25.1 DME and hold.

AWOS-3PT <b>134.875</b>	PORTLAND APP CON ★ (112°-292°) <b>119.75 269.35</b> (293°-111°) <b>120.4 299.2</b>	CLNC DEL <b>123.65</b>	UNICOM <b>122.725 (CTAF)</b>
----------------------------	---	---------------------------	---------------------------------



ELEV	75	TDZE	63
------	----	------	----



CATEGORY	A	B	C	D
S-ILS 1R		263-1/2	200 (200-1/2)	
S-LOC 1R		400-1/2	337 (400-1/2)	
<b>C</b> CIRCLING	560-1	485 (500-1)	840-2 1/4 765 (800-2 1/4)	840-2 1/2 765 (800-2 1/2)

NE-1, 15 MAY 2025 to 12 JUN 2025

NE-1, 15 MAY 2025 to 12 JUN 2025