

WAAS CH <b>97631</b> <b>W34A</b>	APP CRS <b>337°</b>	Rwy Idg TDZE Apt Elev	<b>5001</b> <b>102</b> <b>107</b>
--	------------------------	-----------------------------	---

# RNAV (GPS) RWY 34

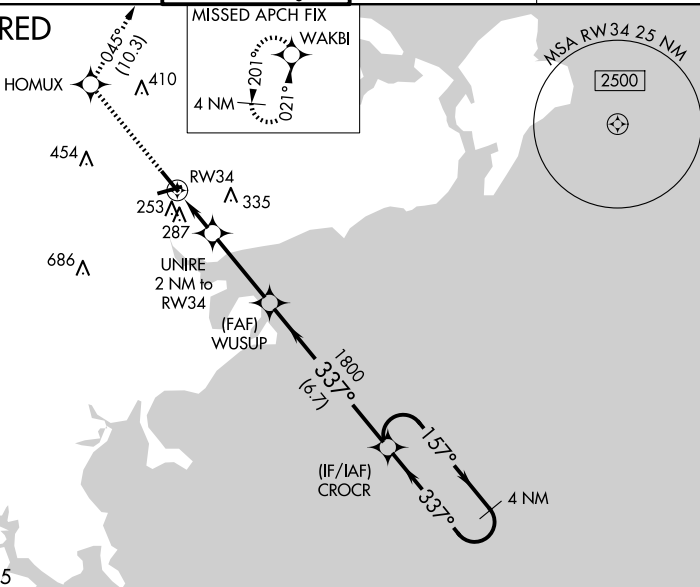
BEVERLY RGNL (BVY)

**⚠** For uncompensated Baro-VNAV systems, LNAV/VNAV NA below -18°C (0°F) or above 54°C (130°F). Baro-VNAV and VDP NA when using Lawrence altimeter setting. DME/DME RNP-0.3 NA. When local altimeter setting not received, use Lawrence altimeter setting: increase LPV DA to 416 and LNAV/VNAV DA to 502 and all MDA 40 feet; increase LPV all Cats visibility and LNAV/VNAV all Cats visibility and LNAV Cats C and D visibility 1/8 SM and Circling Cats C and D visibility 1/4 SM. Circling Rwy 9 NA at night. Rwy 34 helicopter visibility reduction below 3/4 SM NA. Rwy 9 helicopter visibility reduction below 1 SM NA.

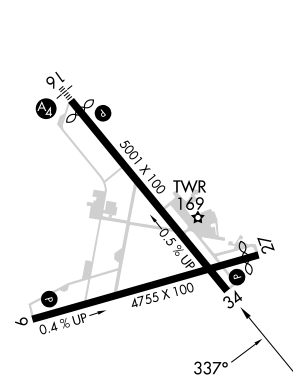
**MISSED APPROACH:**  
Climb to 2000 direct  
HOMUX and on track  
045° to WAKBI and hold.

ATIS <b>119.2</b>	BOSTON APP CON <b>124.4 279.6</b>	<b>BEVERLY TOWER</b> ★ <b>125.2 (CTAF)</b> 0	GND CON <b>121.6</b>	UNICOM <b>122.95</b>
----------------------	--------------------------------------	---	-------------------------	-------------------------

## RADAR REQUIRED



ELEV <b>107</b>	TDZE <b>102</b>
-----------------	-----------------



REIL Rwy 34 **0**  
MIRL Rwy 9-27 and 16-34 **0**

2000	HOMUX	tr 045°	WAKBI	4 NM Holding Pattern
*LNAV only.				
	RW34	UNIRE 2 NM to RW34	WUSUP 1800	CROCR
	1.3 NM	0.7 NM	3.2 NM	6.7 NM
		*1.3 NM to RW34	*760	1800
				157° →
				← 337°
				2000
				GP 3.00° TCH 54
CATEGORY	A	B	C	D
LPV DA	382-1 280 (300-1)			
LNAV/VNAV DA	468-1 1/4 366 (400-1 1/4)			
LNAV MDA	540-1	438 (500-1)	540-1 1/4	438 (500-1 1/4)
<b>C</b> CIRCLING	600-1	493 (500-1)	820-2 713 (800-2)	880-2 1/2 773 (800-2 1/2)

NE-1, 15 MAY 2025 to 12 JUN 2025

NE-1, 15 MAY 2025 to 12 JUN 2025