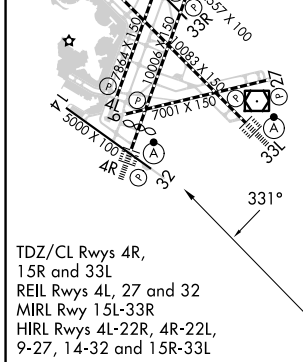
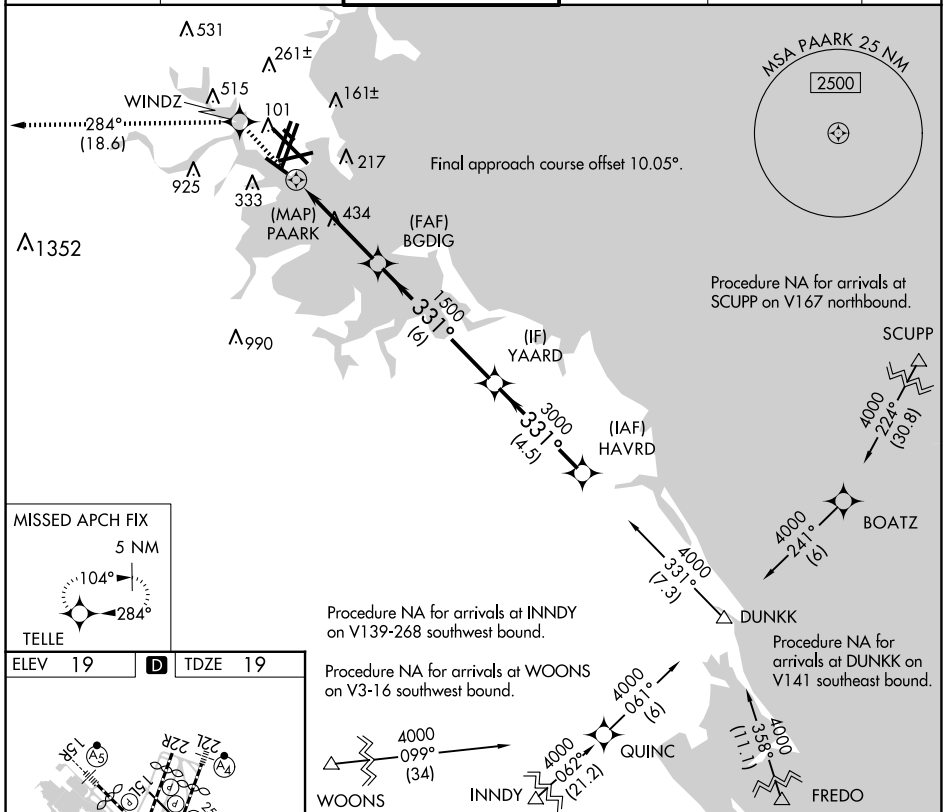


APP CRS	Rwy Idg	5000
331°	TDZE	19
	Apt Elev	19

RNAV (GPS) RWY 32

GENERAL EDWARD LAWRENCE LOGAN INTL (BOS)

RNP APCH - GPS.		MISSED APPROACH: Climb to 3000 direct WINDZ and on track 284° to TELLE and hold.			
D-ATIS	BOSTON APP CON	BOSTON TOWER	GND CON	CLNC DEL	CPDLC
135.0	120.6 263.1	128.8 257.8 (WEST) 132.225 257.8 (EAST)	121.75 121.9	121.65 257.8	



ELEV 19	D TDZE 19										
3000 WINDZ	tr 284° TELLE										
<p>Procedure NA for arrivals at WINDZ on V139-268 southwest bound.</p> <p>Procedure NA for arrivals at WOONS on V3-16 southwest bound.</p> <p>Procedure NA for arrivals at INNDY on V139-268 southwest bound.</p> <p>Procedure NA for arrivals at WOONS on V3-16 southwest bound.</p> <p>Procedure NA for arrivals at DUNKK on V141 southeast bound.</p>											
<p>1.9 NM to PAARK</p> <p>PAARK</p> <p>≤ 2.91° TCH 45</p> <p>1500</p> <p>331°</p> <p>3000</p> <p>4000</p> <p>4000</p> <p>0.5 1.9 2.3 NM 6 NM 4.5 NM 7.3 NM</p>	<p>HAVRD DUNKK</p> <p>YAARD</p> <p>331° 4000</p> <p>4000</p>										
<table border="1"> <tr> <th>CATEGORY</th> <th>A</th> <th>B</th> <th>C</th> <th>D</th> </tr> <tr> <td>LNAV MDA</td> <td>820-1 801 (900-1)</td> <td>820-1¼ 801 (900-1¼)</td> <td>820-2½</td> <td>801 (900-2½)</td> </tr> </table>	CATEGORY	A	B	C	D	LNAV MDA	820-1 801 (900-1)	820-1¼ 801 (900-1¼)	820-2½	801 (900-2½)	
CATEGORY	A	B	C	D							
LNAV MDA	820-1 801 (900-1)	820-1¼ 801 (900-1¼)	820-2½	801 (900-2½)							

NE-1, 15 MAY 2025 to 12 JUN 2025

NE-1, 15 MAY 2025 to 12 JUN 2025