

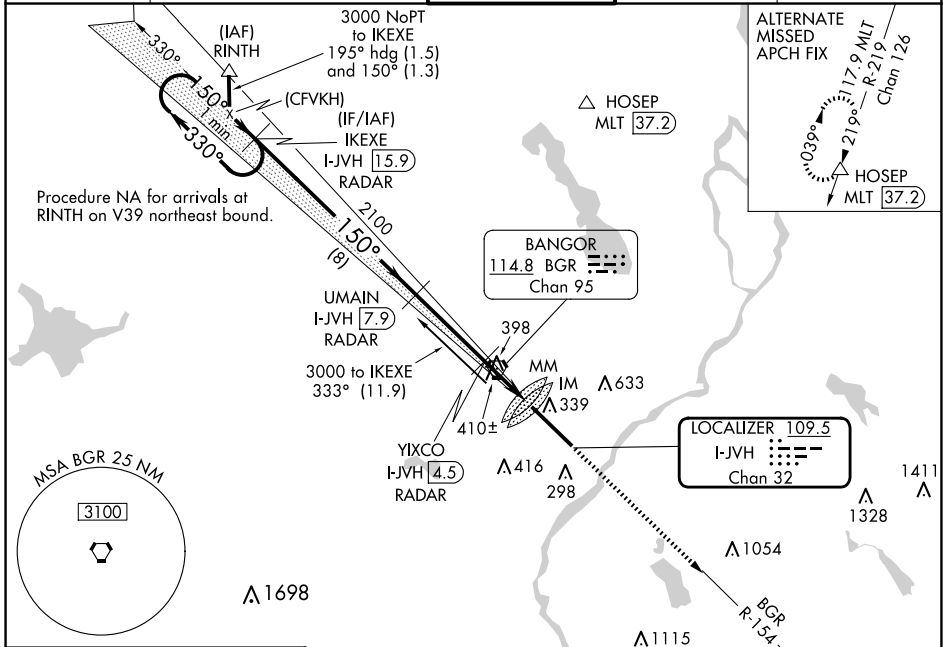
LOC/DME I-JVH 109.5 Chan 32	APP CRS 150°	Rwy Idg 11440 TDZE 192 Apt Elev 192
---	------------------------	--

ILS Y or LOC Y RWY 15

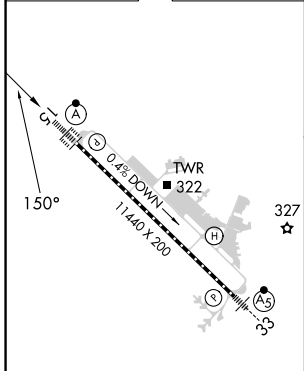
BANGOR INTL (BGR)

<p>ASR</p>	<p>Circling NA NE of Rwy 15-33. DME or RADAR required. For inoperative ALS, increase S-ILS 15 Cat E visibility to RVR 4000, and S-LOC 15 Cat C/D/E visibility to 1 1/2 SM.</p>	<p>ALSIF-2</p>	<p>MISSED APPROACH: Climb to 3000 on heading 150° and BGR VORTAC R-154 to ELSUH/BGR 18.3 DME/RADAR and hold.</p>

ATIS 127.75	BANGOR APP CON 118.925 239.3	BANGOR TOWER 120.7 233.7	GND CON 121.9 348.6	CLNC DEL 135.9 348.6
-----------------------	--	------------------------------------	-------------------------------	--------------------------------



ELEV 192	D	TDZE 192
----------	----------	----------



TDZ/CL Rwy 15
HIRL Rwy 15-33

FAF to MAP 5.8 NM

Knots	60	90	120	150	180
Min:Sec	5:48	3:52	2:54	2:19	1:56

DME or RADAR REQUIRED

One Minute Holding Pattern	IKEXE I-JVH [15.9] RADAR	UMAIN I-JVH [7.9] RADAR	YIXCO I-JVH [4.5] RADAR	3000 hdg 150°	BGR R-154	ELSUH BGR [18.3] RADAR
3000	← 330°	← 150°	← 150°	← 150°	← 150°	← 150°
GS 3.00° TCH 50	VGS1 and ILS glidepath not coincident (VGS1 Angle 3.00/TCH 55).					
*LOC only.						

CATEGORY	A	B	C	D	E
S-ILS 15	392/18 200 (200-1/2)				
S-LOC 15	660/24	468 (500-1/2)	660/50	468 (500-1)	
<input checked="" type="checkbox"/> CIRCLING	660-1	720-1	740-1 1/2	820-2	880-2 1/2
	468 (500-1)	528 (600-1)	548 (600-1 1/2)	628 (700-2)	688 (700-2 1/2)

NE-1, 15 MAY 2025 to 12 JUN 2025

NE-1, 15 MAY 2025 to 12 JUN 2025