
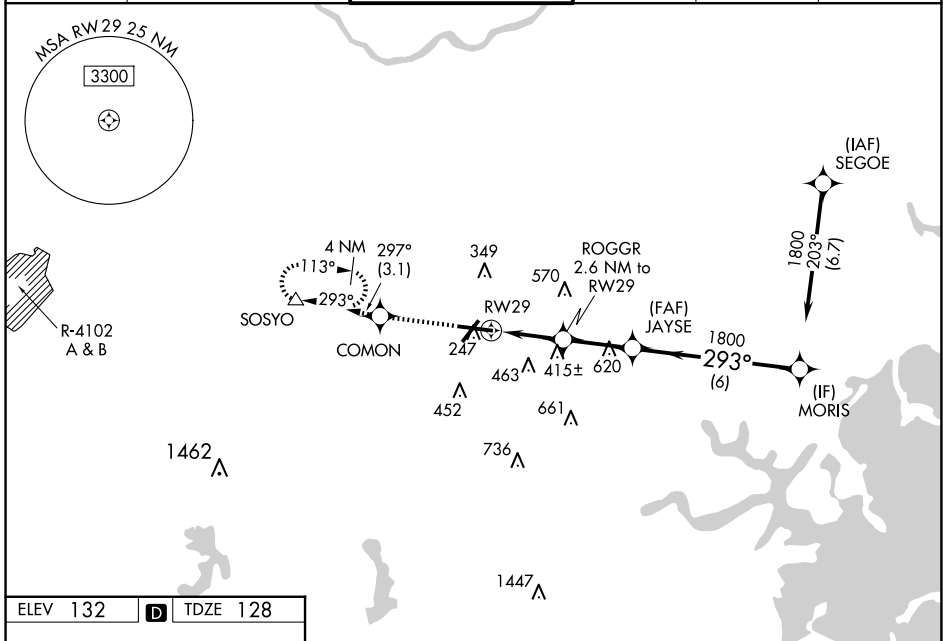


| | | |
|--|------------------------|---|
| WAAS CH 86612 W29A | APP CRS 293° | Rwy Idg 7011 TDZE 128 Apt Elev 132 |
|--|------------------------|---|

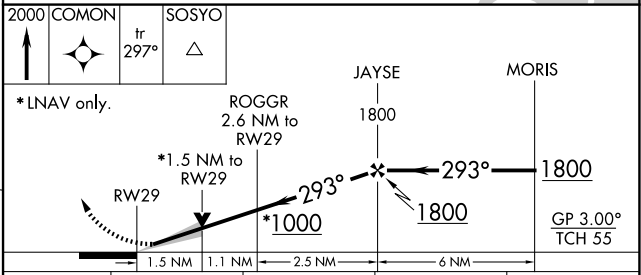
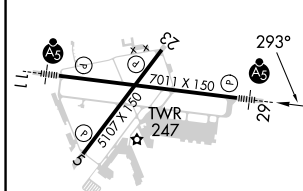
RNAV (GPS) Z RWY 29

LAURENCE G HANSCOM FLD (BED)

| | | | | | |
|----------------------|--------------------------------------|--|-------------------------|--|-------------------------|
| RNP APCH | | <p>For uncompensated Baro-VNAV systems, LNAV/VNAV NA below -16°C (4°F) or above 54°C (130°F). Baro-VNAV and VDP NA with Boston altimeter setting. When local altimeter setting not received, use Boston altimeter setting; increase LPV DA to 377 feet, LNAV/VNAV DA to 663 feet; increase all MDAs 60 feet and LNAV Cats C and D, and Circling Cat D visibility ¼ SM. For inop ALS, increase LNAV/VNAV all Cats visibility and LNAV Cat C/D to 1 ½ SM. For inop ALS when using Boston altimeter setting, increase LNAV/VNAV all Cats visibility to 1 ½ SM and LNAV Cat C/D to 1 ½ SM.</p> | | <p>MALSRL  MISSED APPROACH: Climb to 2000 direct COMON and on track 297° to SOSYO and hold.</p> | |
| ATIS 124.6 | BOSTON APP CON 124.4 279.6 | HANSCOM TOWER ★ 118.5 (CTAF) 0 257.2 | GND CON 121.7 | CLNC DEL 121.85 | UNICOM 122.95 |



| | | |
|----------|----------|----------|
| ELEV 132 | D | TDZE 128 |
|----------|----------|----------|



| | | | | |
|-------------------|--------|-------------|------------------------|------------------------|
| 2000 | COMON | tr 297° | SOSYO | |
| *LNAV only. | | | | |
| | | | ROGGR 2.6 NM to RWY 29 | JAYSE 1800 |
| | | | *1.5 NM to RWY 29 | MORIS 1800 |
| | | | *1000 | GP 3.00° TCH 55 |
| | | | 1.5 NM | 1.1 NM |
| | | | 2.5 NM | 6 NM |
| CATEGORY | A | B | C | D |
| LPV DA | 328-½ | | 200 (200-½) | |
| LNAV/VNAV DA | 614-1⅛ | | 486 (500-1⅛) | |
| LNAV MDA | 640-½ | 512 (600-½) | 640-1 | 512 (600-1) |
| C CIRCLING | 720-1 | 588 (600-1) | 880-2¼ 748 (800-2¼) | 920-2½ 788 (800-2½) |

NE-1, 15 MAY 2025 to 12 JUN 2025

NE-1, 15 MAY 2025 to 12 JUN 2025