

LOC/DME I-BDR <b>110.7</b> Chan <b>44</b>	APP CRS <b>060°</b>	Rwy Idg TDZE Apt Elev	<b>4677</b> <b>7</b> <b>9</b>
---	------------------------	-----------------------------	-------------------------------------

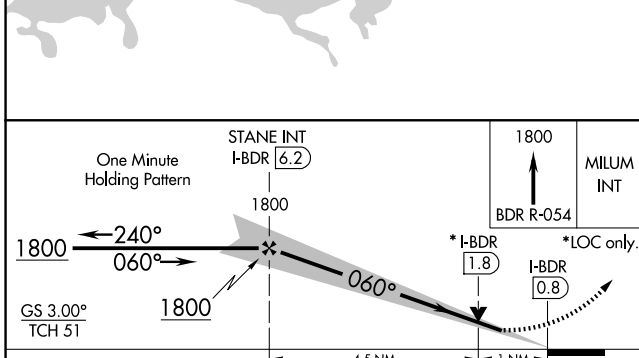
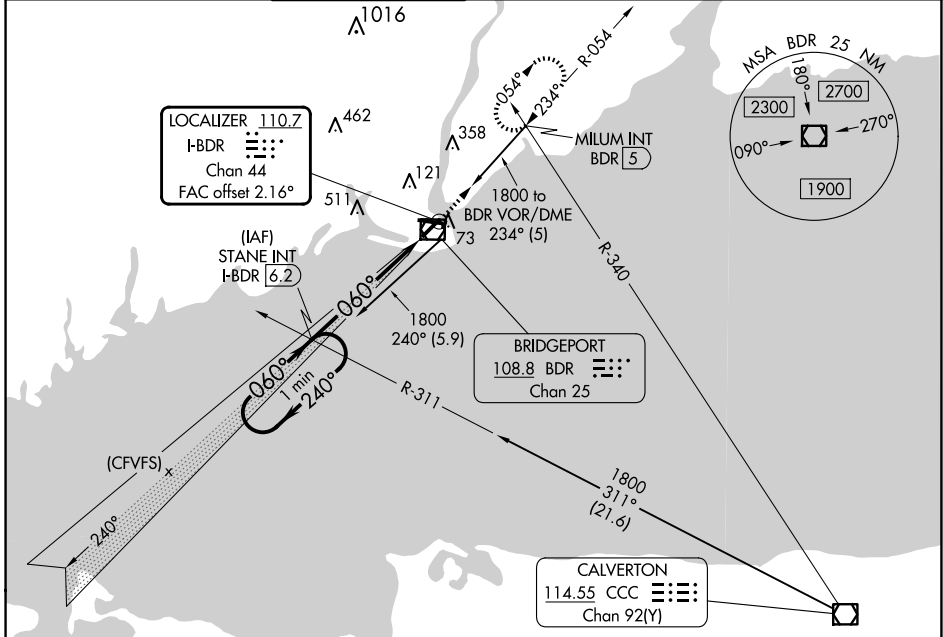
# ILS or LOC RWY 6

BRIDGEPORT/SIKORSKY (BDR)

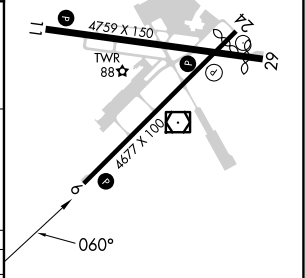
**Autopilot coupled approach NA below 350.**  
**⚠ Circling Rwy 11, 29 NA at night.**  
**Rwy 6 helicopter visibility reduction below ¾ SM NA.**

**MISSED APPROACH: Climb to 1800 on the BDR VOR/DME R-054 to MILUM INT and hold.**

ATIS <b>119.15</b>	NEW YORK APP CON <b>124.075 343.65</b>	BRIDGEPORT TOWER* <b>120.9</b> (CTAF) <b>257.8</b>	GND CON <b>121.75 257.8</b>	CLNC DEL <b>121.75</b>	CLNC DEL <b>124.075</b> (When twr closed)	UNICOM <b>123.0</b>
-----------------------	---	---	--------------------------------	---------------------------	---	------------------------



ELEV	9	TDZE	7
------	---	------	---



CATEGORY	A	B	C	D
S-ILS 6		257-¾	250 (300-¾)	
S-LOC 6		380-1	373 (400-1)	
<b>C</b> CIRCLING	480-1 471 (500-1)	620-1 611 (700-1)	820-2½ 811 (900-2½)	820-2¾ 811 (900-2¾)

REIL Rws 6, 11, 24, and 29	
HIRL Rws 6-24 and 11-29	
FAF to MAP 5.5 NM	
Knots	60 90 120 150 180
Min:Sec	5:30 3:40 2:45 2:12 1:50

NE-1, 15 MAY 2025 to 12 JUN 2025

NE-1, 15 MAY 2025 to 12 JUN 2025