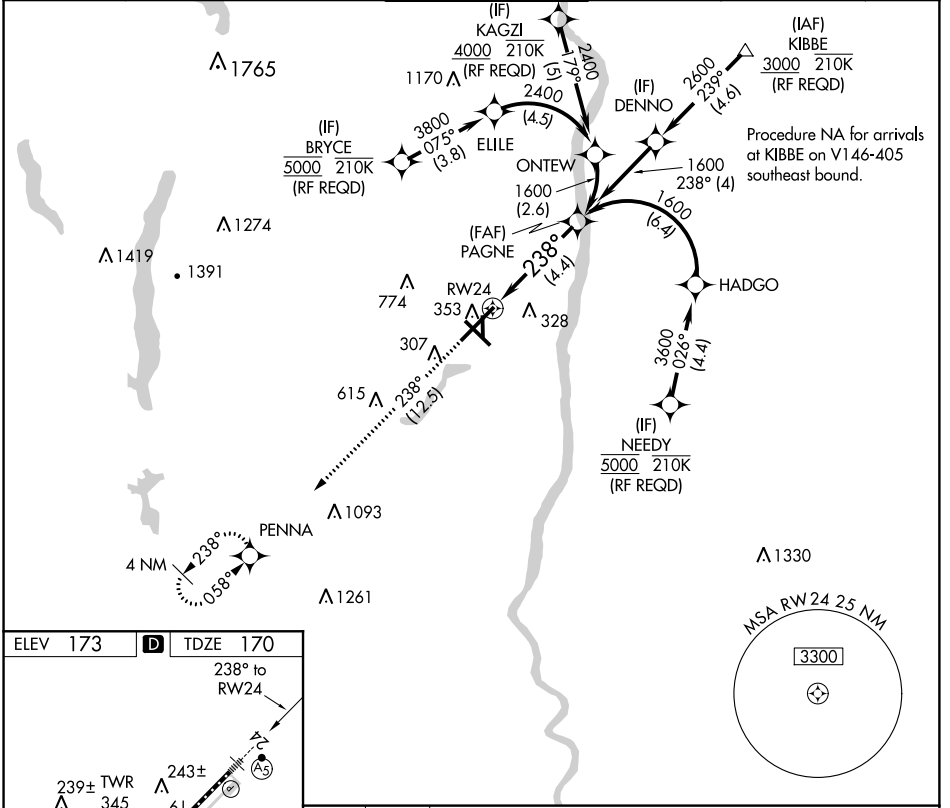


APP CRS	Rwy Idg	9509
238°	TDZE	170
	Apt Elev	173

RNAV (RNP) Z RWY 24

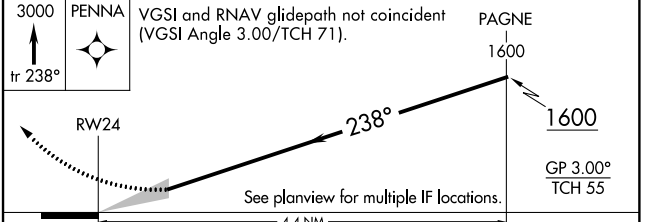
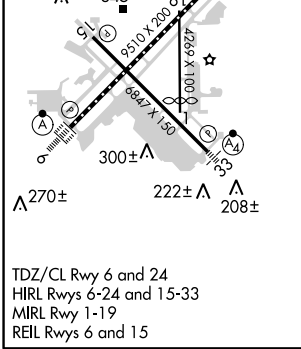
BRADLEY INTL (BDL)

-23°C	For uncompensated Baro-VNAV systems, procedure NA below -18°C (0°F) or above 54°C (130°F). GPS required. For inop ALS, increase all Cats visibility to 1½ SM.	MALSR 	MISSED APPROACH: Climb to 3000 on track 238° to PENNA and hold.		
	D-ATIS 118.15	BRADLEY APP CON 123.95 290.55 (061°-240°) 125.35 281.5 (241°-060°)	BRADLEY TOWER 120.3 351.8	GND CON 121.9 348.6	CLNC DEL 121.75 322.3



NE-1, 11 OCT 2018 to 08 NOV 2018

NE-1, 11 OCT 2018 to 08 NOV 2018



CATEGORY	A	B	C	D
RNP 0.30 DA	622/60		452 (500-1½)	

AUTHORIZATION REQUIRED