

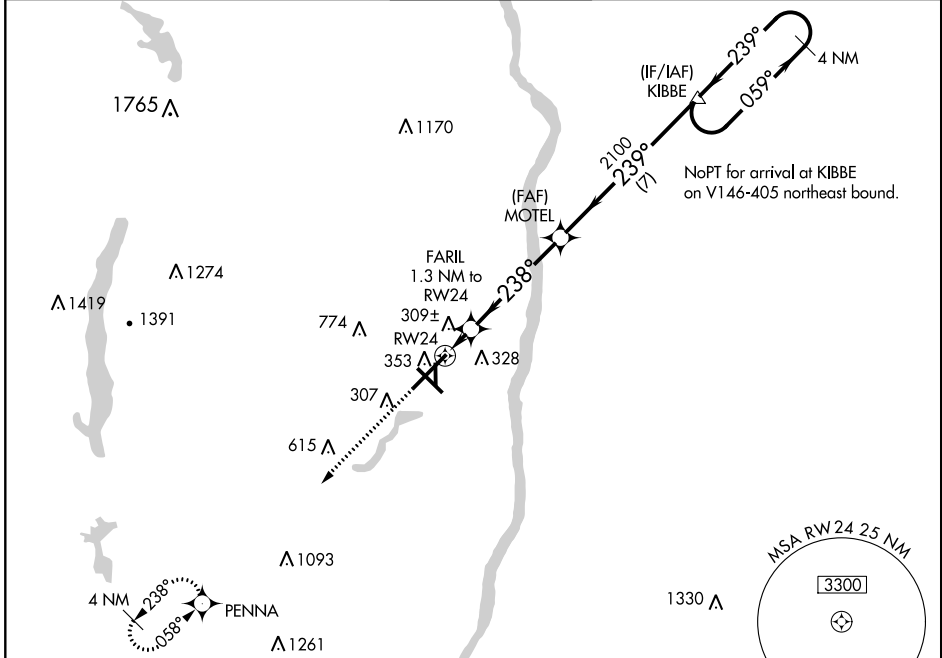
WAAS CH 97310 W24A	APP CRS 238°	Rwy Idg TDZE 170 Apt Elev 173	9509
--	------------------------	---	-------------

RNAV (GPS) Y RWY 24

BRADLEY INTL (BDL)

	For uncompensated Baro-VNAV systems, LNAV/VNAV NA below -18°C (0°F) or above 54°C (130°F). Circling Rwy 19 NA at night. DME/DME RNP-0.3 NA.	MALSR 	MISSED APPROACH: Climb to 3000 direct PENNA and hold.
	For inop ALS, increase LNAV/VNAV all Cats visibility to 1¼ SM.		

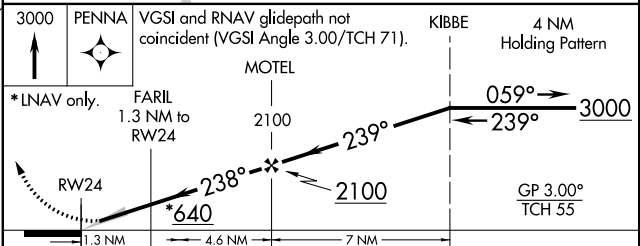
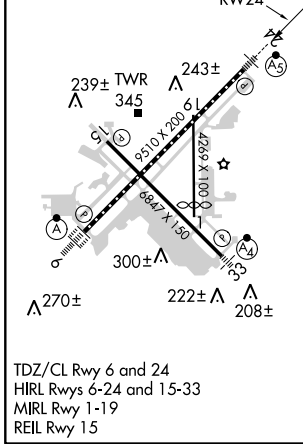
D-ATIS 118.15	BRADLEY APP CON 123.95 290.55 (061°-240°) 125.35 281.5 (241°-060°)	BRADLEY TOWER 120.3 351.8	GND CON 121.9 348.6	CLNC DEL 121.75 322.3	CPDLC
-------------------------	--	-------------------------------------	-------------------------------	---------------------------------	-------



NE-1, 24 MAY 2018 to 21 JUN 2018

NE-1, 24 MAY 2018 to 21 JUN 2018

ELEV 173	D	TDZE 170
----------	----------	----------



CATEGORY	A	B	C	D
LPV DA	370/18		200 (200-½)	
LNAV/VNAV DA	560/45		390 (400-¾)	
LNAV MDA	560/24	390 (400-½)	560/35	390 (400-¾)
C CIRCLING	700-1	527 (600-1)	1120-2¾ 947 (1000-2¾)	1220-3 1047 (1100-3)