

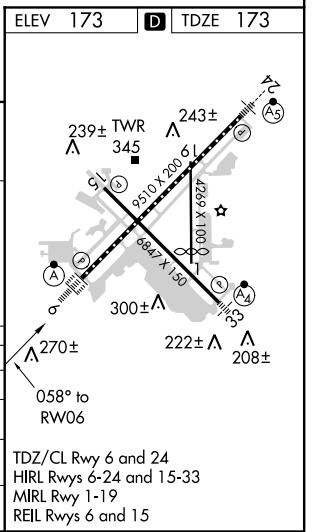
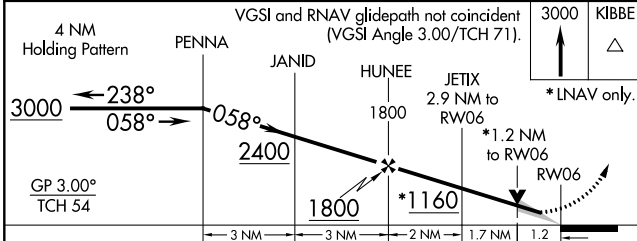
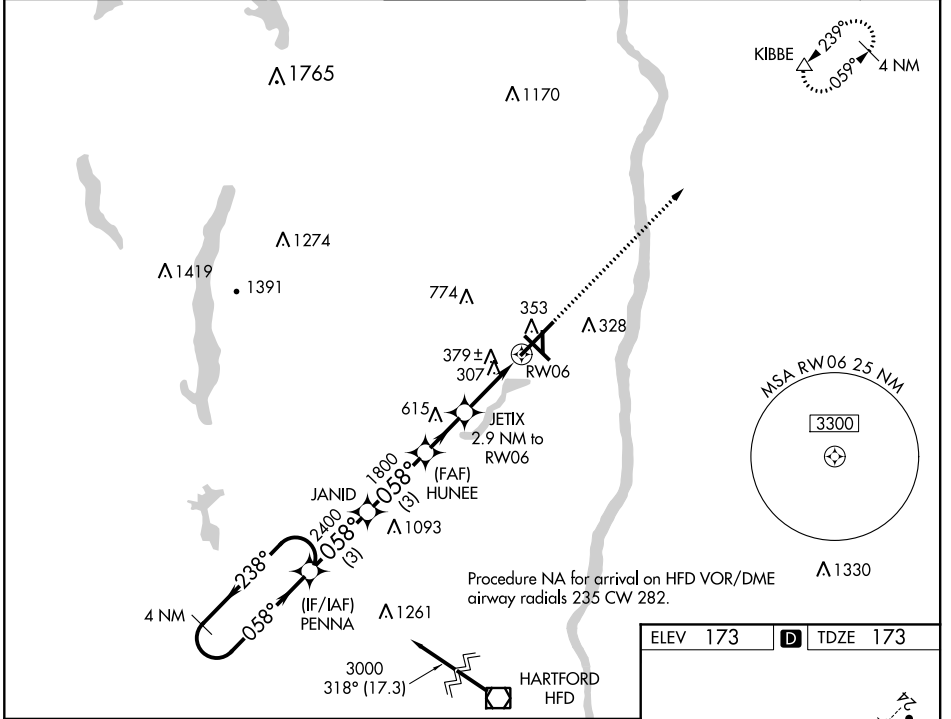
WAAS CH 70328 W06A	APP CRS 058°	Rwy Idg TDZE Apt Elev	9509 173 173
--	------------------------	-----------------------------	---

RNAV (GPS) Y RWY 6

BRADLEY INTL (BDL)

	For uncompensated Baro-VNAV systems, LNAV/VNAV NA below -18°C (0°F) or above 54°C (130°F). Circling Rwy 19 NA at night. DME/DME RNP-0.3 NA. For inop ALS, increase LNAV/VNAV all Cats visibility to 1½ SM and LNAV Cat C/D visibility to 1¼ SM.		MISSED APPROACH: Climb to 3000 direct KIBBE and hold.
	-23°C		

D-ATIS 118.15	BRADLEY APP CON 123.95 290.55 (061°-240°) 125.35 281.5 (241°-060°)	BRADLEY TOWER 120.3 351.8	GND CON 121.9 348.6	CLNC DEL 121.75 322.3	CPDLC
-------------------------	--	-------------------------------------	-------------------------------	---------------------------------	-------



CATEGORY	A	B	C	D
LPV DA	373/18 200 (300-½)			
LNNAV/VNAV DA	640/60 467 (500-1½)			
LNNAV MDA	640/24	467 (500-½)	640/50	467 (500-1)
CIRCLING	700-1	527 (600-1)	1120-2¾ 947 (1000-2¾)	1220-3 1047 (1100-3)

NE-1, 11 OCT 2018 to 08 NOV 2018

NE-1, 11 OCT 2018 to 08 NOV 2018