

WAAS CH <b>60928</b> <b>W15A</b>	APP CRS <b>148°</b>	Rwy Idg TDZE Apt Elev	<b>6847</b> <b>171</b> <b>173</b>
--	------------------------	-----------------------------	---

# RNAV (GPS) RWY 15

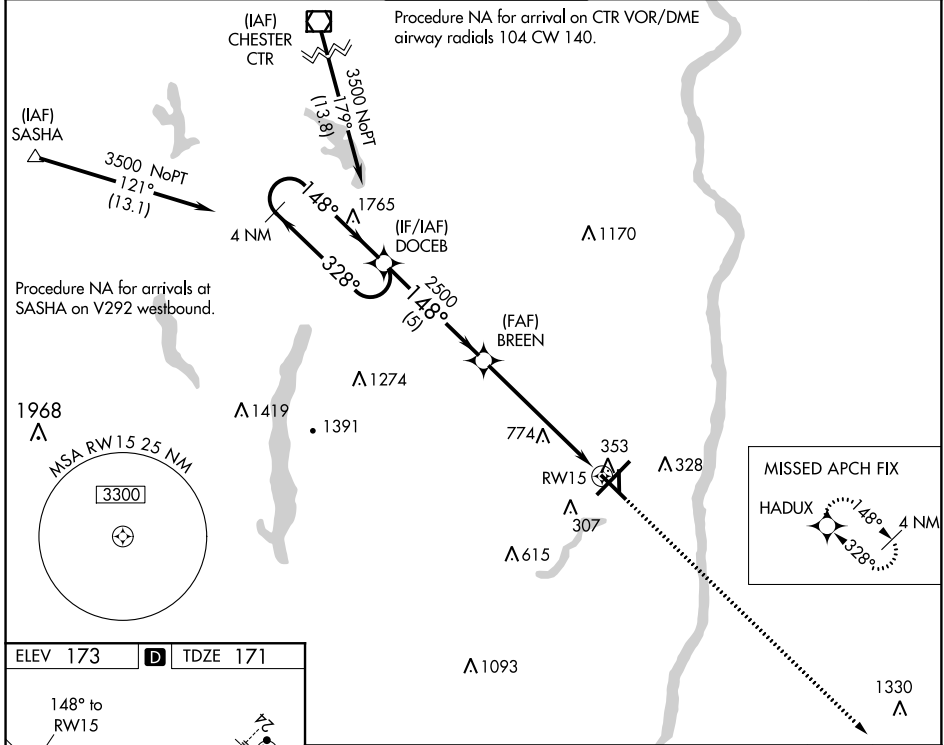
BRADLEY INTL (BDL)

**⚠** For uncompensated Baro-VNAV systems, LNAV/VNAV NA below -18°C (0°F) or above 46°C (115°F). Circling Rwy 19 NA at night. Rwy 15 helicopter visibility reduction below ¾ SM NA. DME/DME RNP-0.3 NA.

**⚠** -23°C

MISSED APPROACH: Climb to 3000 direct HADUX and hold.

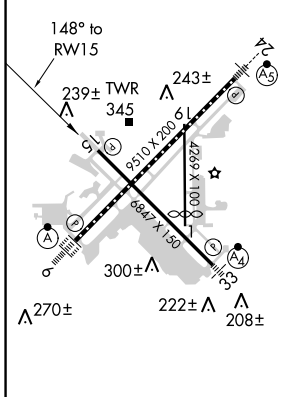
D-ATIS <b>118.15</b>	BRADLEY APP CON <b>123.95 290.55</b> (061°-240°) <b>125.35 281.5</b> (241°-060°)	BRADLEY TOWER <b>120.3 351.8</b>	GND CON <b>121.9 348.6</b>	CLNC DEL <b>121.75 322.3</b>	CPDLC
-------------------------	--	-------------------------------------	-------------------------------	---------------------------------	-------



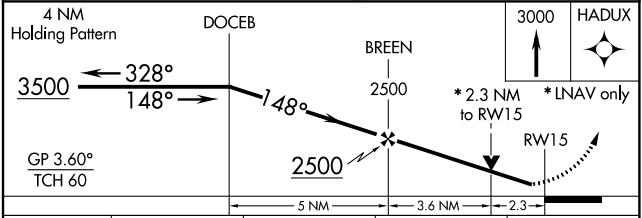
NE-1, 11 OCT 2018 to 08 NOV 2018

NE-1, 11 OCT 2018 to 08 NOV 2018

ELEV 173	<b>D</b>	TDZE 171
----------	----------	----------



TDZ/CL Rwy 6 and 24  
HIRL Rwy 6-24 and 15-33  
MIRL Rwy 1-19  
REIL Rwy 6 and 15



CATEGORY	A	B	C	D
LPV DA	480-7/8	309 (400-7/8)		NA
LNAV/VNAV DA	1100-3	929 (1000-3)		NA
LNAV MDA	1100-1¼	929 (1000-1¼)	1100-2½ 929 (1000-2½)	NA
<b>C</b> CIRCLING	1100-1¼	927 (1000-1¼)	1120-2¾ 947 (1000-2¾)	NA