

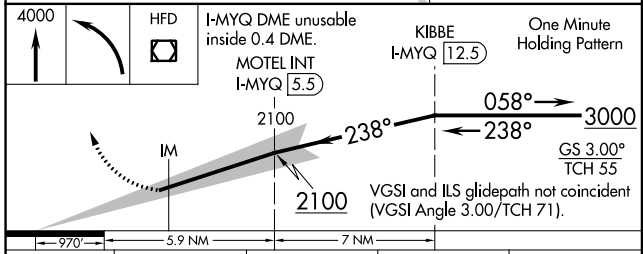
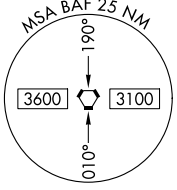
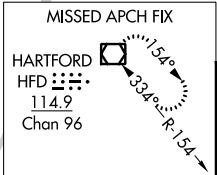
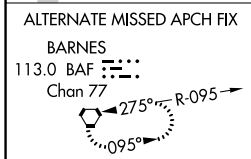
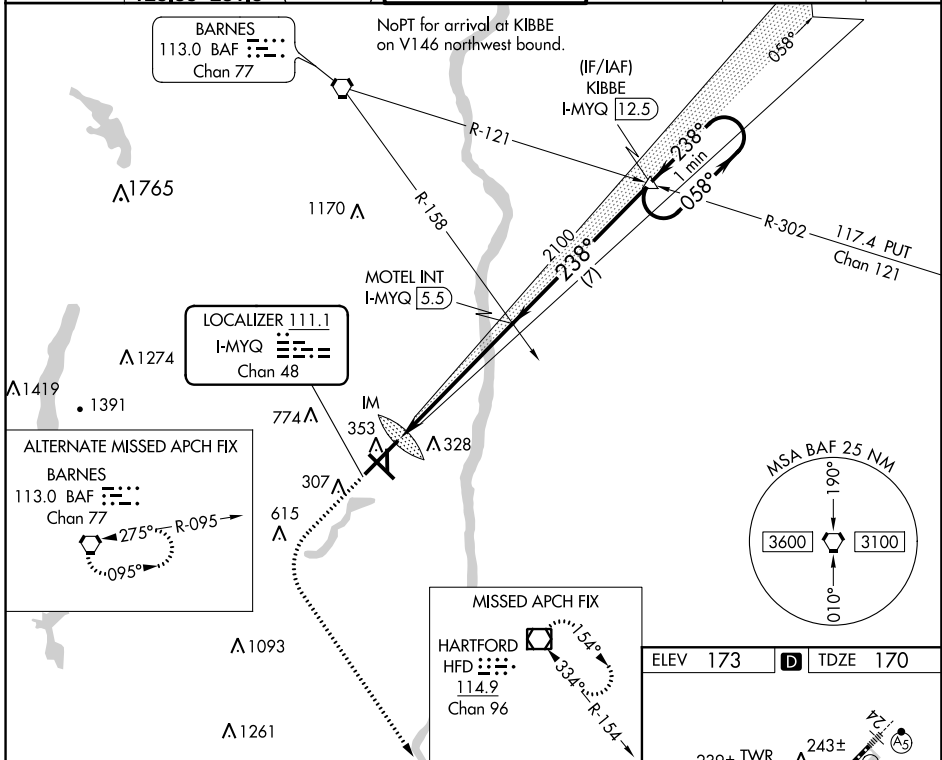
LOC/DME I-MYQ 111.1 Chan 48	APP CRS 238°	Rwy Idg TDZE Apt Elev 9509 170 173
--	------------------------	--

ILS RWY 24 (SA CAT I & II)

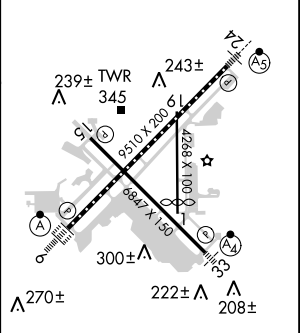
BRADLEY INTL (BDL)

 -23°C	CAT I: Requires specific OPSEC, MSPEC or LOA approval and use of HUD to DH. CAT II: Reduced lighting: Requires specific OPSEC, MSPEC or LOA approval and use of Autoland or HUD to touchdown.	MALSR 	MISSED APPROACH: Climb to 4000 then left turn direct HFD VOR/DME and hold.
---------------	---	-----------	--

D-ATIS 118.15	BRADLEY APP CON 123.95 290.55 (061°-240°) 125.35 281.5 (241°-060°)	BRADLEY TOWER 120.3 351.8	GND CON 121.9 348.6	CLNC DEL 121.75 322.3	CPDLC
-------------------------	--	-------------------------------------	-------------------------------	---------------------------------	-------



ELEV 173	TDZE 170
----------	----------



CATEGORY	A	B	C	D
S-ILS 24	SA CAT I	RA 163/14	150	DA 320
S-ILS 24	SA CAT II	RA 113/12	100	DA 270

SA CATEGORY I & II ILS-SPECIAL AIRCREW & AIRCRAFT CERTIFICATION REQUIRED

TDZ/CL Rwy 6 and 24
HIRL Rwy 6-24 and 15-33
MIRL Rwy 1-19
REIL Rwy 15

NE-1, 01 MAR 2018 to 29 MAR 2018

NE-1, 01 MAR 2018 to 29 MAR 2018