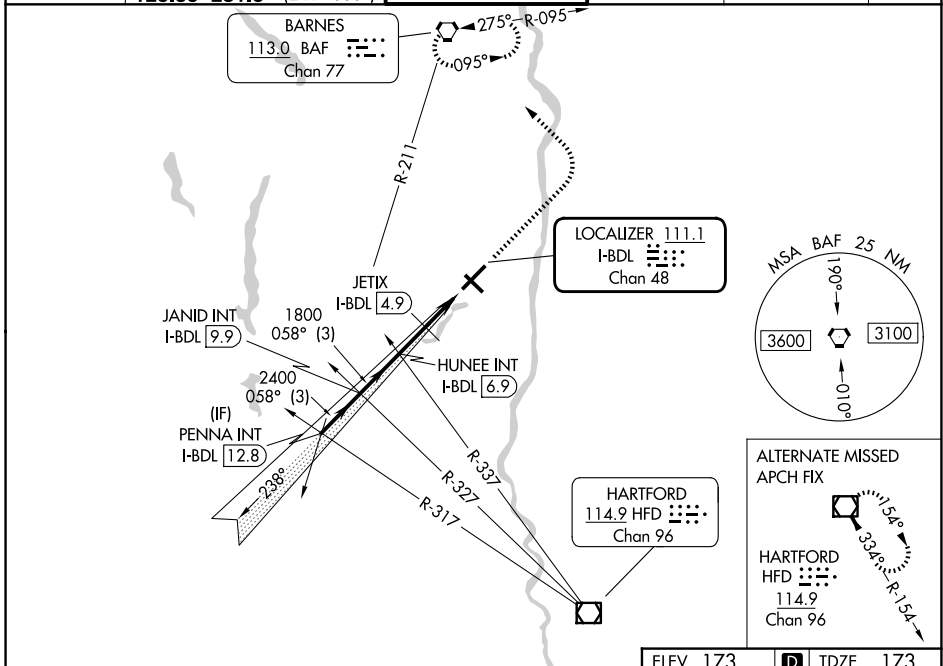


# COPTER ILS or LOC RWY 6

BRADLEY INTL (BDL)

LOC/DME I-BDL	APP CRS	Rwy Ldg	9509
111.1	058°	TDZE	173
Chan 48		Apt Elev	173

RADAR required for procedure entry.		ALSIF-2	MISSED APPROACH: Climb to 4000 then left turn direct BAF VORTAC and hold.		
▼ For inop ALS, increase H-ILS 6 visibility to RVR 2400 and H-LOC 6 visibility to RVR 4000. ▲ NA					
D-ATIS	YANKEE APP CON	BRADLEY TOWER	GND CON	CLNC DEL	CPDLC
118.15	123.95 290.55 (061°-240°) 125.35 281.5 (241°-060°)	120.3 351.8	121.9 348.6	121.75 322.3	



PENNA INT I-BDL 12.8 JANID INT I-BDL 9.9 HUNEE INT I-BDL 6.9 JETIX I-BDL 4.9 I-BDL 2.9 I-BDL 1.9		VGSI and ILS glidepath not coincident (VGSI Angle 3.00/TCH 71). 4000 BAF
GS 3.00° HCH 54		
3000 2400 1800 1160		
3 NM    3 NM    2 NM    1.9 NM    1 NM		
CATEGORY	COPTER	
H-ILS 6	273/12 100 (100-¼)	
H-LOC 6	1160/24 987 (1000-½)	
H-ILS 6	CAT II RA 101	
JETIX FIX MINIMUMS (DME REQUIRED)		
H-LOC 6	560/24 387 (400-½)	
<b>COPTER ILS CATEGORY II - SPECIAL AIRCREW &amp; AIRCRAFT CERTIFICATION REQUIRED</b>		

ELEV 173	TDZE 173
TWR 9510 Y 200 151 130 33 058°	
TDZ/CL Rwy 6 and 24 HIRL Rwys 6-24 and 15-33 REIL Rwys 6 and 15	
FAF to MAP 4.9 NM	
Knots	45 60 75 90 105
Min:Sec	6:32 4:55 3:55 3:16 2:48

NE-1, 07 AUG 2025 to 04 SEP 2025

NE-1, 07 AUG 2025 to 04 SEP 2025