

VORTAC ENE 117.1 Chan 118	APP CRS 088°	Rwy Idg TDZE Apt Elev	3000 157 157
---	------------------------	-----------------------------	---

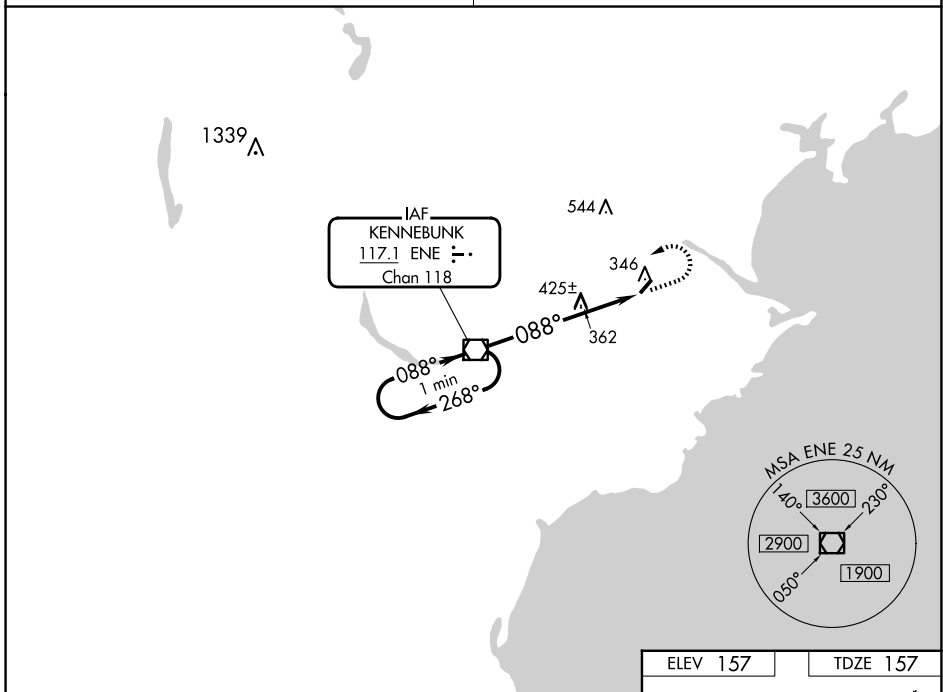
VOR RWY 6
BIDDEFORD MUNI (B19)

NA Obtain local altimeter on CTAF; when not received, use Sanford altimeter setting.
VDP NA when using Sanford altimeter setting. Circling Rwy 24 NA at night.
Rwy 6 helicopter visibility reduction below 3/4 SM NA.

MISSED APPROACH: Climb to 800, then climbing left turn to 2300 direct ENE VOR/DME and hold.

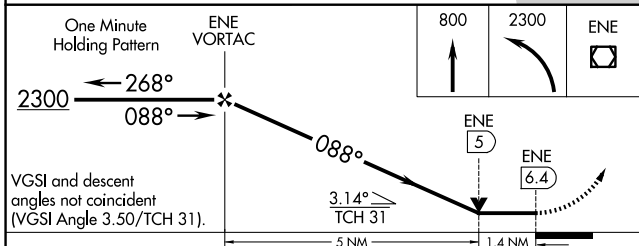
PORTLAND APP CON *
119.75 269.35

UNICOM
123.0 (CTAF) 0



NE-1, 07 AUG 2025 to 04 SEP 2025

NE-1, 07 AUG 2025 to 04 SEP 2025



CATEGORY	A	B	C	D
S-6	700-1	543 (600-1)	700-1 ⁵ / ₈ 543 (600-1 ⁵ / ₈)	NA
CIRCLING	700-1 543 (600-1)	720-1 563 (600-1)	800-1 ³ / ₄ 643 (700-1 ³ / ₄)	NA
SANFORD ALTIMETER SETTING MINIMUMS				
S-6	740-1	583 (600-1)	740-1 ³ / ₄ 583 (600-1 ³ / ₄)	NA
CIRCLING	740-1 583 (600-1)	760-1 603 (700-1)	840-2 683 (700-2)	NA

ELEV 157	TDZE 157
REIL Rwy 6 0 MIRL Rwy 6-24 0	
FAF to MAP 6.4 NM	
Knots	60 90 120 150 180
Min:Sec	6:24 4:16 3:12 2:34 2:08