

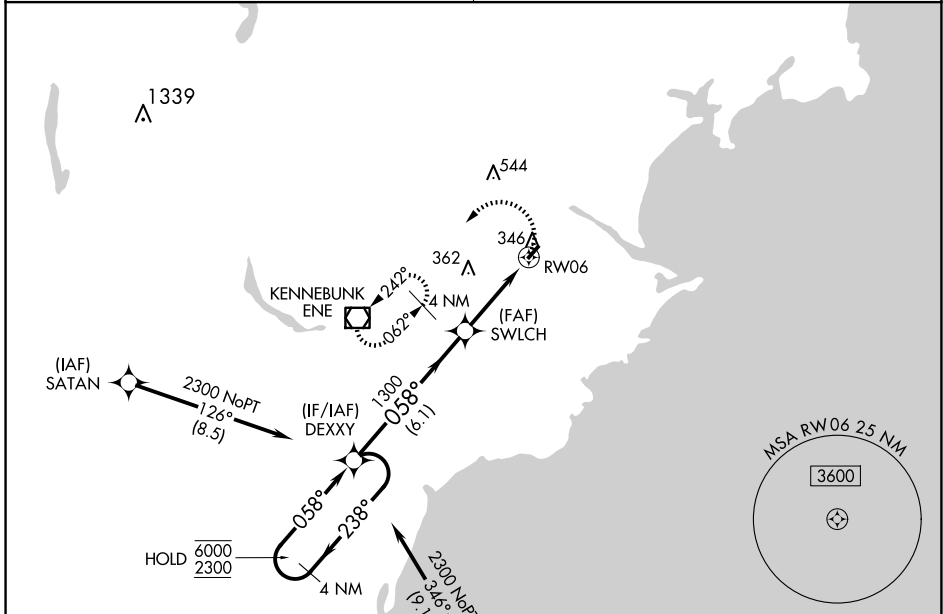
APP CRS	Rwy Idg	<b>3000</b>
<b>058°</b>	TDZE	<b>157</b>
	Apt Elev	<b>157</b>

# RNAV (GPS) RWY 6

BIDDEFORD MUNI (B19)

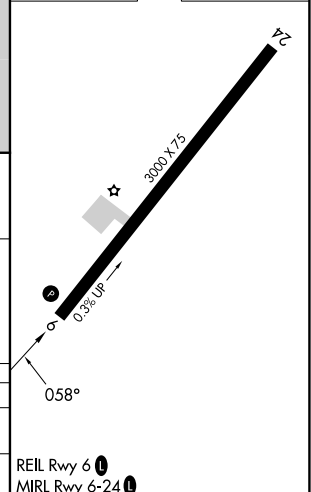
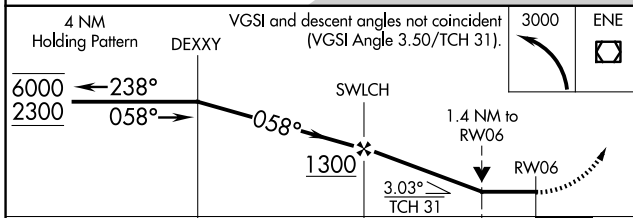
RNP APCH.	<p>Rwy 6 helicopter visibility reduction below 3/4 SM NA. Obtain local altimeter setting on CTAF; when not received use Sanford altimeter setting and increase all MDA 40 feet and LNAV visibility Cat C 1/8 SM, and Circling visibility Cat C 1/4 SM. VDP NA when using Sanford altimeter setting. Circling Rwy 24 NA at night.</p>	<p>MISSED APPROACH: Climbing left turn to 3000 direct ENE VOR/DME and hold, continue climb-in-hold to 3000.</p>
<p><b>NA</b></p>		

<p>PORTLAND APP CON ★</p> <p><b>119.75 269.35</b></p>	<p>UNICOM</p> <p><b>123.0 (CTAF) 1</b></p>
---	--



Procedure NA for arrivals at ARMIE on V167 southbound.

ELEV 157	TDZE 157
----------	----------



CATEGORY	A	B	C	D
LNAV MDA	680-1	523 (600-1)	680-1½ 523 (600-1½)	NA
CIRCLING	780-1	623 (700-1)	800-1¾ 643 (700-1¾)	NA

REIL Rwy 6 1  
MRL Rwy 6-24 1

NE-1, 15 MAY 2025 to 12 JUN 2025

NE-1, 15 MAY 2025 to 12 JUN 2025