

WAAS CH 48929 W15A	APP CRS 148°	Rwy Idg TDZE 345 Apt Elev 345	2997
---------------------------------	------------------------	---	-------------

RNAV (GPS) RWY 15

OXFORD COUNTY RGNL (81B)

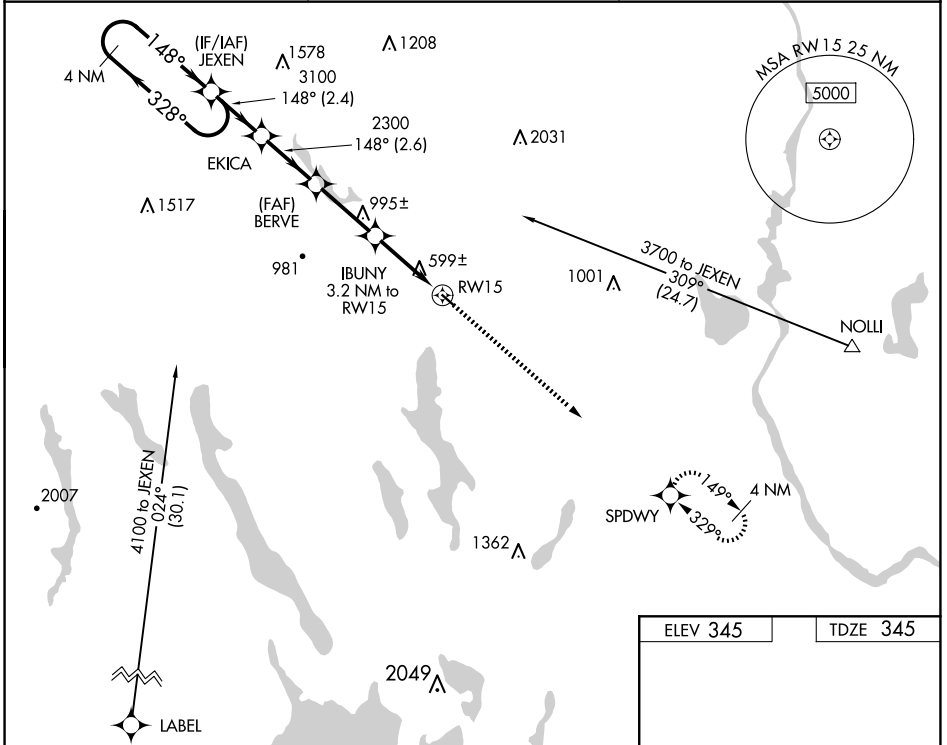
NA DME/DME RNP-0.3 NA. Procedure NA at night. Use Auburn/Lewiston altimeter setting; when not received, use Fryeburg altimeter setting and increase all MDAs 40 feet. Helicopter visibility reduction below 1 SM NA.

MISSED APPROACH: Climb to 3600 direct SPDWY and hold, continue climb-in-hold to 3600.

LEW AWOS-3
118.025

PORTLAND APP CON ★
125.5 353.9

UNICOM
122.8 (CTAF) 0



NE-1, 15 MAY 2025 to 12 JUN 2025

NE-1, 15 MAY 2025 to 12 JUN 2025

4 NM Holding Pattern		Visual Segment - Obstacles.		3600	SPDWY
3700 ← 328°		→ 148°		↑	✧
← 148°		→ 148°			
		3100			
		2300			
		1400			
		← 2.4 NM		← 2.6 NM	
				← 2.8 NM	
				← 3.2 NM	
CATEGORY	A	B	C	D	
LP MDA	900-1	555 (600-1)		NA	
LNVA MDA	1140-1	1140-1¼		NA	
	795 (800-1)	795 (800-1¼)			
CIRCLING	1220-1¼	1400-1½		NA	
	875 (900-1¼)	1055 (1100-1½)			

