

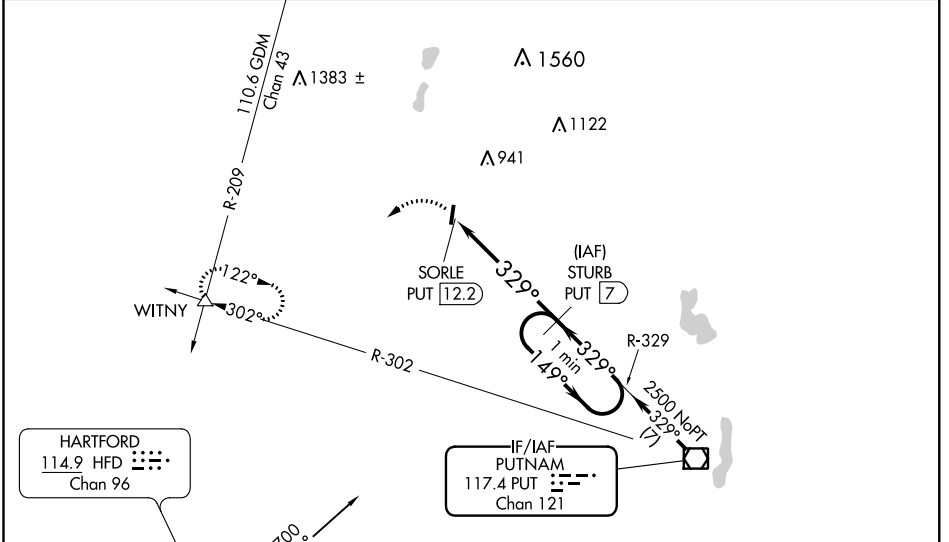
VOR/DME PUT <b>117.4</b> Chan <b>121</b>	APP CRS <b>329°</b>	Rwy Idg TDZE Apt Elev <b>N/A</b> <b>N/A</b> <b>699</b>
--	------------------------	---

**VOR/DME-B**  
SOUTHBRIDGE MUNI (3B0)

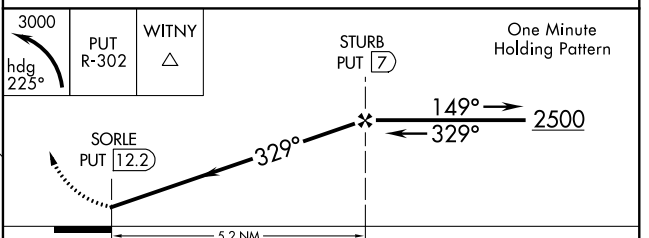
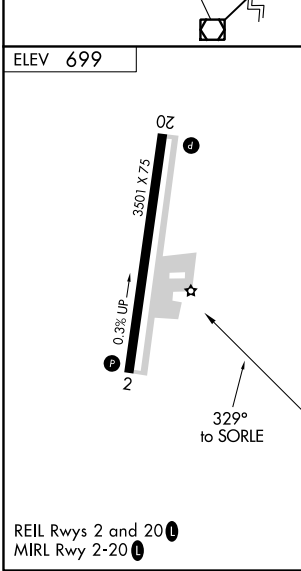
**⚠** Circling to Rwy 20 NA at night. Use Worcester altimeter setting; when not received, use Bradley Intl altimeter setting and increase all MDA 80 feet and increase Cat C visibility 1/2 mile.

**⚠ NA** MISSED APPROACH: Climbing left turn to 3000 on heading 225° and on PUT VOR/DME R-302 to WITNY INT and hold.

WORCESTER RGNL ASOS <b>126.55</b>	BRADLEY APP CON <b>119.0 327.1</b>	UNICOM <b>122.8 (CTAF)</b>
--------------------------------------	---------------------------------------	-------------------------------



Procedure NA for arrivals on PUT VOR/DME airway radials 283 CW 359.



CATEGORY	A	B	C	D
CIRCLING	1360-1	661 (700-1)	1360-1 <sup>3</sup> / <sub>4</sub> 661 (700-1 <sup>3</sup> / <sub>4</sub> )	NA

NE-1, 29 MAR 2018 to 26 APR 2018

NE-1, 29 MAR 2018 to 26 APR 2018