

WAAS CH <b>42616</b> <b>W02A</b>	APP CRS <b>022°</b>	Rwy Idg TDZE <b>696</b> Apt Elev <b>699</b>	<b>3501</b>
--	------------------------	---	-------------

# RNAV (GPS) RWY 2

SOUTHBRIDGE MUNI (3B0)

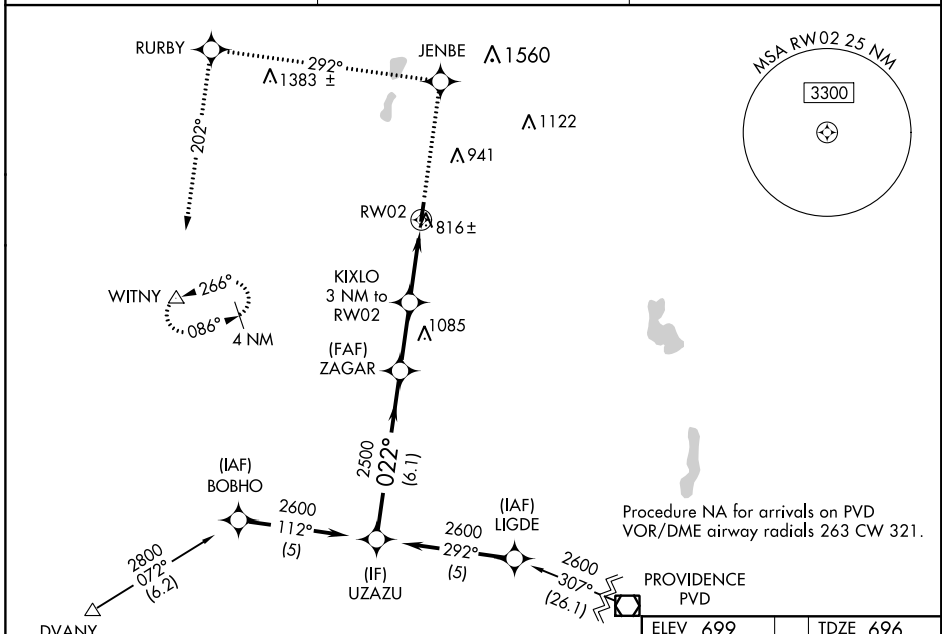
**NA** DME/DME RNP-0.3 NA. Visibility reduction by helicopters NA. Use Worcester altimeter setting, when not received use Bradley Intl altimeter setting and increase all DA 72 feet and all MDA 80 feet, increase LPV all Cats, LNAV Cat C and Circling Cat C visibility ¼ mile. Circling to Rwy 10-28 NA. Straight-in/Circling Rwy 2 procedure NA at night.

**MISSED APPROACH:** Climb to 3000 direct JENBE and via track 292° to RURBY and via track 202° to WITNY and hold.

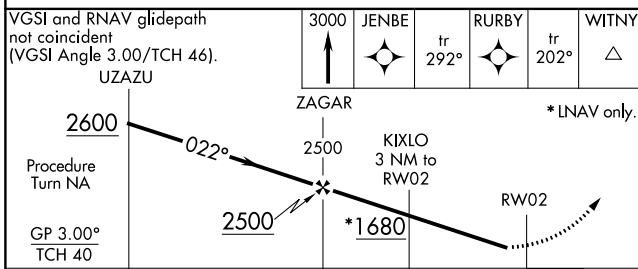
WORCESTER RGNL ASOS  
**126.55**

BRADLEY APP CON  
**119.0 327.1**

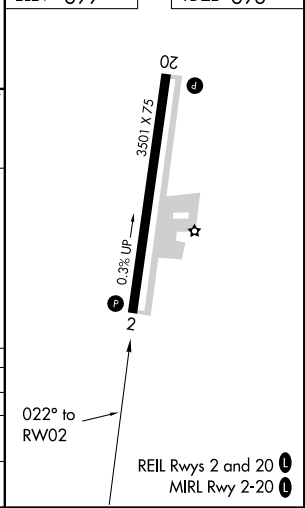
UNICOM  
**122.8 (CTAF)**



ELEV 699	TDZE 696
----------	----------



CATEGORY	A	B	C	D
LPV DA	1018-1¼		322 (400-1¼)	NA
LNAV MDA	1300-1	604 (700-1)	1300-1¼ 604 (700-1¼)	NA
CIRCLING	1360-1	661 (700-1)	1360-1¼ 661 (700-1¼)	NA



NE-1, 21 JUN 2018 to 19 JUL 2018

NE-1, 21 JUN 2018 to 19 JUL 2018