

WAAS CH <b>99702</b> <b>W32A</b>	APP CRS <b>321°</b>	Rwy Idg TDZE Apt Elev	<b>5600</b> <b>950</b> <b>953</b>
--	------------------------	-----------------------------	---

# RNAV (GPS) RWY 32

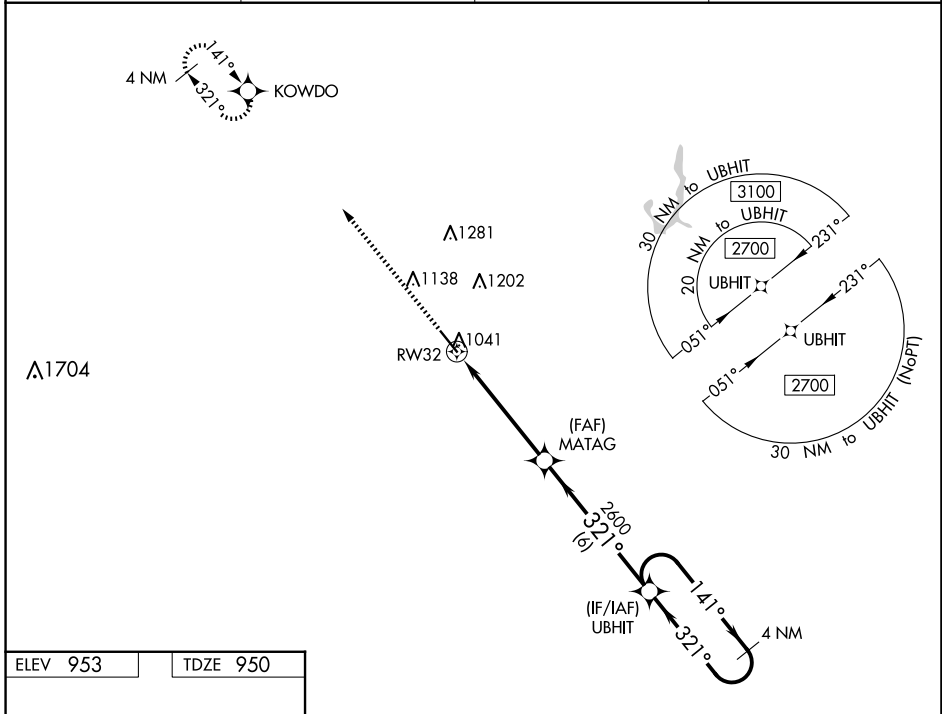
NEWTON MUNI-EARL JOHNSON FLD (TNU)

**⚠** For uncompensated Baro-VNAV systems, LNAV/VNAV NA below -19°C (2°F) or above 54°C (130°F). DME/DME RNP-0.3 NA.  
**⚠** For inop MALSR, increase LNAV/VNAV all Cats visibility to ¾ SM.

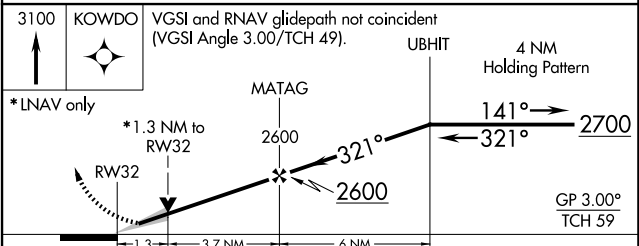
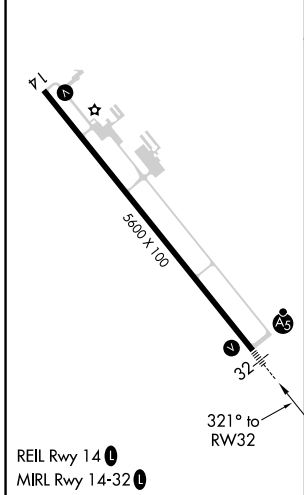


MISSED APPROACH: Climb to 3100 direct KOWDO and hold.

AWOS-3 <b>132.275</b>	DES MOINES APP CON <b>123.9 307.15</b>	CLNC DEL <b>126.3</b>	UNICOM <b>122.8 (CTAF) 0</b>
--------------------------	---	--------------------------	---------------------------------



ELEV 953	TDZE 950
----------	----------



CATEGORY	A	B	C	D
LPV DA		1150-½	200 (200-½)	
LNAV/VNAV DA		1202-½	252 (300-½)	
LNAV MDA	1400-½	450 (500-½)	1400-⅞	450 (500-⅞)
<b>C</b> CIRCLING	1420-1 467 (500-1)	1440-1 487 (500-1)	1520-1½ 567 (600-1½)	1600-2 647 (700-2)