

LOC/DME I-TBN <b>110.9</b> Chan 46	APP CRS <b>144°</b>	Rwy Idg <b>5537</b> TDZE <b>1158</b> Apt Elev <b>1159</b>
--	------------------------	---

# ILS or LOC RWY 14

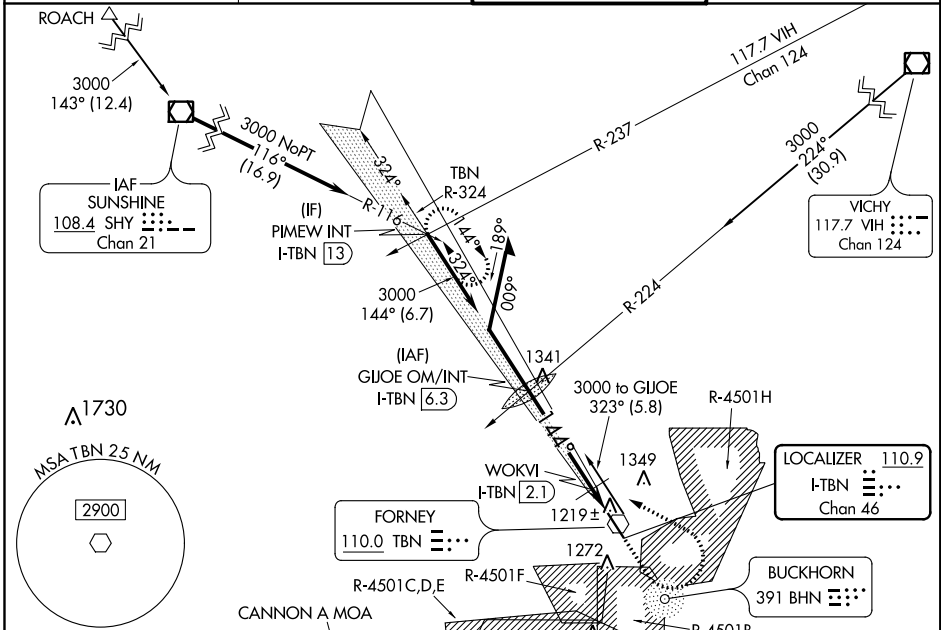
WAYNESVILLE-ST ROBERT RGNL FORNEY FIELD (T'BN)

**⚠** When local altimeter setting not received, use Rolla/Vichy altimeter setting and increase all DA 69 feet; and all MDA 80 feet, increase S-LOC 14 Cat C/D visibility ¼ mile and WOKVI fix minimums S-LOC 14 Cat C/D visibility ¼ mile. For inop MALSRL when using Rolla/Vichy altimeter setting increase S-ILS 14 all Cats visibility ⅜ mile. For inop MALSRL increase S-LOC 14 Cats C and D visibility ⅜ mile.

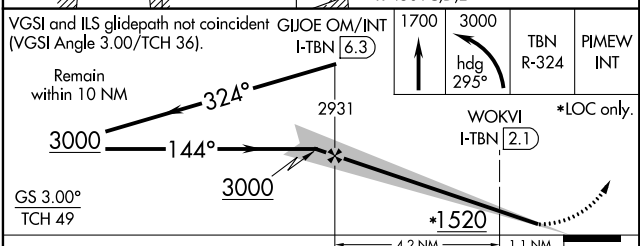
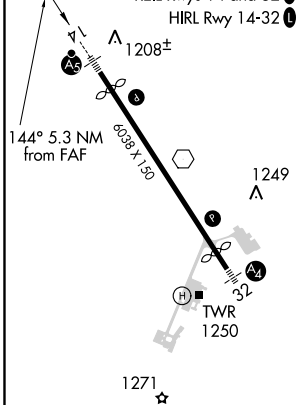


**MISSED APPROACH:** Climb to 1700 then climbing left turn to 3000 on heading 295° and on TBN VOR R-324 to PIMEW INT/13 DME and hold.

D-ATIS <b>118.7 229.4</b>	KANSAS CITY CENTER <b>128.35 284.675</b>	FORNEY TOWER * <b>125.4 (CTAF) 0 268.7</b>	GND CON <b>123.75 256.8</b>
------------------------------	---	---	--------------------------------



ELEV 1159	TDZE 1158
-----------	-----------



CATEGORY	A	B	C	D
S-ILS 14	1358-½ 200 (200-½)			
S-LOC 14	1520-½	362 (400-½)	1520-⅝	362 (400-⅝)
CIRCLING	1580-1 421 (500-1)	1620-1 461 (500-1)	1660-1½ 501 (600-1½)	1720-2 561 (600-2)
WOKVI FIX MINIMUMS (DME REQUIRED)				
S-LOC 14	1480-½ 322 (400-½)			
CIRCLING	1580-1 421 (500-1)	1620-1 461 (500-1)	1660-1½ 501 (600-1½)	1720-2 561 (600-2)

FAF to MAP 5.3 NM					
Knots	60	90	120	150	180
Min:Sec	5:18	3:32	2:39	2:07	1:46

NC-3, 26 APR 2018 to 24 MAY 2018

NC-3, 26 APR 2018 to 24 MAY 2018