


LOC/DME I-SUX 109.3 Chan 30	APP CRS 313°	Rwy Idg TDZE Apt Elev	9002 1096 1098
---	------------------------	-----------------------------	---

ILS or LOC RWY 31

SIoux GATEWAY/BRIG GENERAL BUD DAY FLD (SUX)

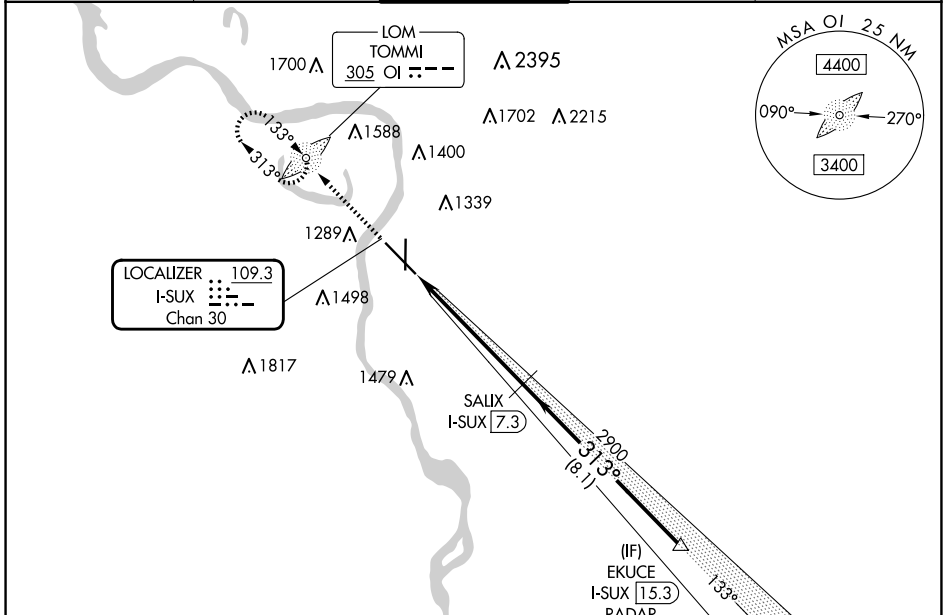
ADF required. DME required for LOC only. RADAR required for procedure entry.

⚠ Autopilot coupled approach NA below 2025 MSL. For inop ALS, increase S-ILS 31 Cat E visibility to RVR 4000 and S-LOC 31 Cat E to 1½ SM. *RVR 1800 authorized with use of FD or AP or HUD to DA.

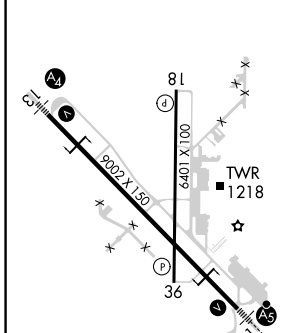
MALSR 

MISSED APPROACH: Climb to 3100 direct TOMMI LOM and hold, continue climb-in-hold to 3100.

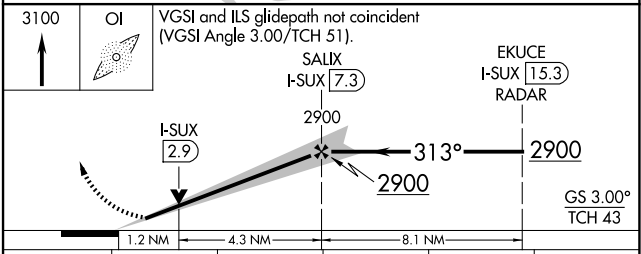
ATIS 119.45 270.8	SIoux CITY APP CON * 124.6 307.0	SIoux CITY TOWER * 118.7 (CTAF) 0 254.3	GND CON 121.9 348.6	UNICOM 122.95
-----------------------------	--	---	-------------------------------	-------------------------



ELEV 1098	D	TDZE 1096
-----------	----------	-----------



REIL Rwy 18	HIRL Rwy 13-31	MIRL Rwy 18-36			
FAF to MAP 5.5 NM					
Knots	60	90	120	150	180
Min:Sec	5:30	3:40	2:45	2:12	1:50



CATEGORY	A	B	C	D	E
S-ILS 31*	1296/24 200 (200-½)				
S-LOC 31	1540/24	444 (500-½)	1540/45 444 (500-¾)		
C CIRCLING	1640-1 542 (600-1)	1700-1 602 (700-1)	1700-1¾ 602 (700-1¾)	1860-2½ 762 (800-2½)	1940-3 842 (900-3)

ILS or LOC RWY 31