

WAAS CH 97414 W26A	APP CRS 259°	Rwy Idg TDZE 463 Apt Elev 463	5000
--	------------------------	---	-------------

RNAV (GPS) RWY 26R

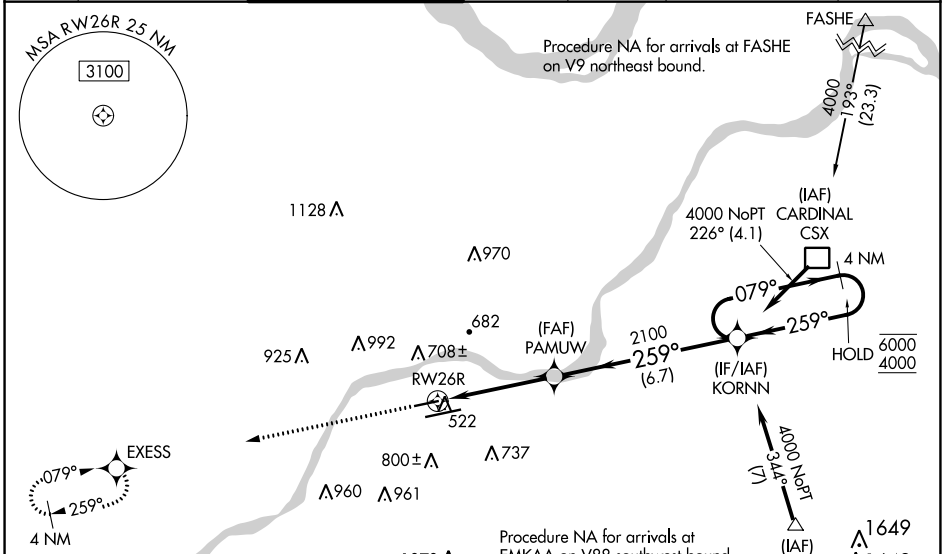
SPIRIT OF ST LOUIS (SUS)

RNP APCH - GPS.

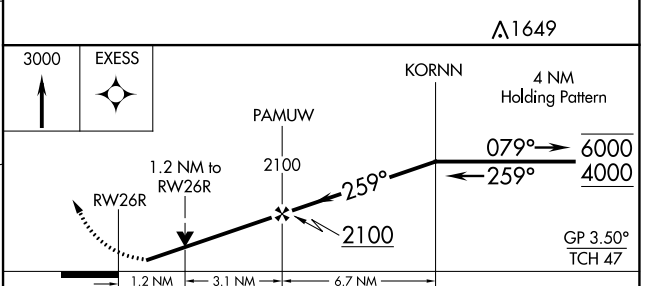
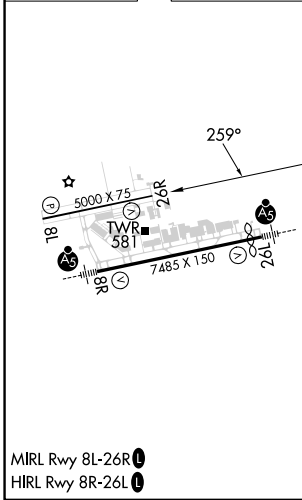
▼ Baro-VNAV and VDP NA when using St Louis Lambert Intl altimeter setting.
 ▲ Rwy 26R helicopter visibility reduction below 3/4 SM NA. For uncompensated Baro-VNAV systems, LNAV/VNAV NA below -18°C or above 54°C. When local altimeter setting not received, use St Louis Lambert Intl altimeter setting: increase LPV DA to 798 feet and all visibilities 1/2 SM, increase LNAV/VNAV DA to 823 feet and all visibilities 1/2 SM; increase all MDAs 60 feet.

MISSED APPROACH: Climb to 3000 direct EXCESS and hold.

ATIS 134.8	ST. LOUIS APP CON 126.5 254.3	SPIRIT TOWER* 124.75 (CTAF) 0 257.2	GND CON 121.7	CLNC DEL 133.1	ST. LOUIS CLNC DEL 121.7 (when tower closed)	UNICOM 122.95
----------------------	---	---	-------------------------	--------------------------	---	-------------------------



ELEV 463	D	TDZE 463
-----------------	----------	-----------------



CATEGORY	A	B	C	D
LPV DA	755-7/8	292 (300-7/8)		NA
LNAV/VNAV DA	780-7/8	317 (400-7/8)		NA
LNAV MDA	940-1	477 (500-1)		NA
CIRCLING	1100-1 637 (700-1)	1140-1 677 (700-1)		NA

NC-3, 08 AUG 2024 to 05 SEP 2024

NC-3, 08 AUG 2024 to 05 SEP 2024