

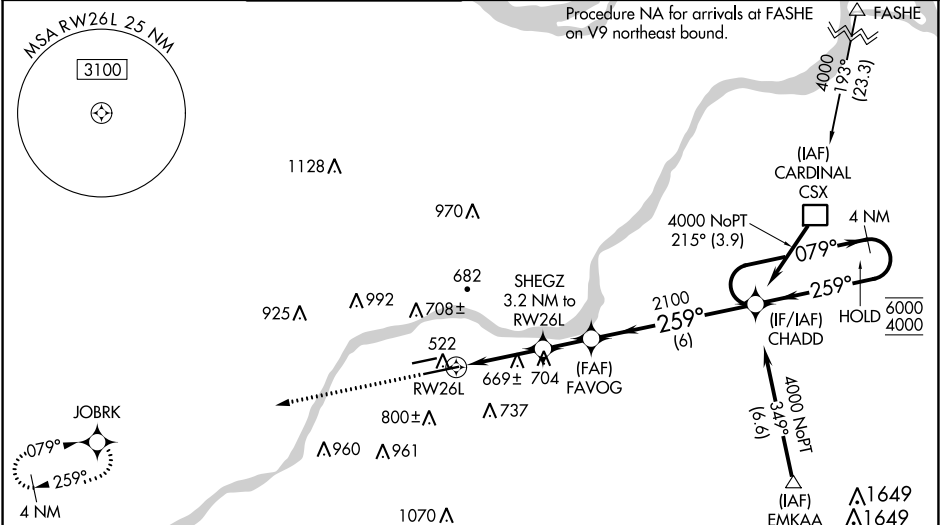
WAAS CH 81914 W26B	APP CRS 259°	Rwy Idg TDZE 462 Apt Elev 463	7004
--	------------------------	---	-------------

RNAV (GPS) RWY 26L

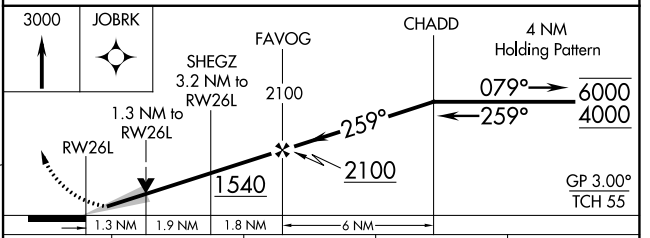
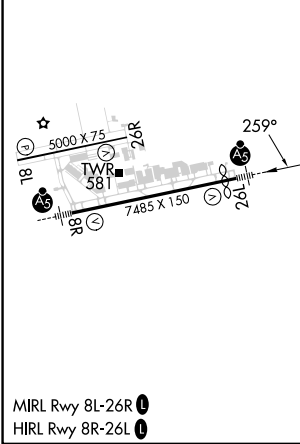
SPIRIT OF ST LOUIS (SUS)

RNP APCH - GPS.		MALSR	MISSED APPROACH: Climb to 3000 direct JOBK and hold.
<p>⚠ Baro-VNAV and VDP NA when using St Louis Lambert Intl altimeter setting. For uncompensated Baro-VNAV systems, LNAV/VNAV NA below -18°C or above 54°C. For inop ALS when using St Louis Lambert Intl altimeter setting, increase LNAV/VNAV all Cats visibility to 1 3/8 SM and LNAV Cat C and D to 1 3/8 SM. When local altimeter setting not received, use St Louis Lambert Intl altimeter setting: increase LPV DA to 705 feet; increase LNAV/VNAV DA to 959 feet and all visibilities to RVR 5000; increase all MDAs 60 feet and LNAV visibility Cat C/D to RVR 5500 and Circling visibility Cat C 1/2 SM.</p> <p>*RVR 1800 authorized with use of FD or AP or HUD to DA (NA when using St Louis Lambert Intl altimeter setting).</p>			

ATIS 134.8	ST. LOUIS APP CON 126.5 254.3	SPIRIT TOWER* 124.75 (CTAF) 0 257.2	GND CON 121.7	CLNC DEL 133.1	ST. LOUIS CLNC DEL 121.7 (when tower closed)	UNICOM 122.95
----------------------	---	---	-------------------------	--------------------------	---	-------------------------



ELEV 463	D TDZE 462
----------	-------------------



CATEGORY	A	B	C	D
LPV DA*	662/24		200 (200-1/2)	
LNAV/VNAV DA	916/45		454 (500-7/8)	
LNAV MDA	920/24	458 (500-1/2)	920/45	458 (500-7/8)
C CIRCLING	1100-1 637 (700-1)	1140-1 677 (700-1)	1180-2 717 (800-2)	1360-3 897 (900-3)

NC-3, 08 AUG 2024 to 05 SEP 2024

NC-3, 08 AUG 2024 to 05 SEP 2024