

ROYAL EIGHT DEPARTURE

AL-359 (FAA)

ST. JOSEPH, MISSOURI

NC-3, 09 NOV 2017 to 07 DEC 2017

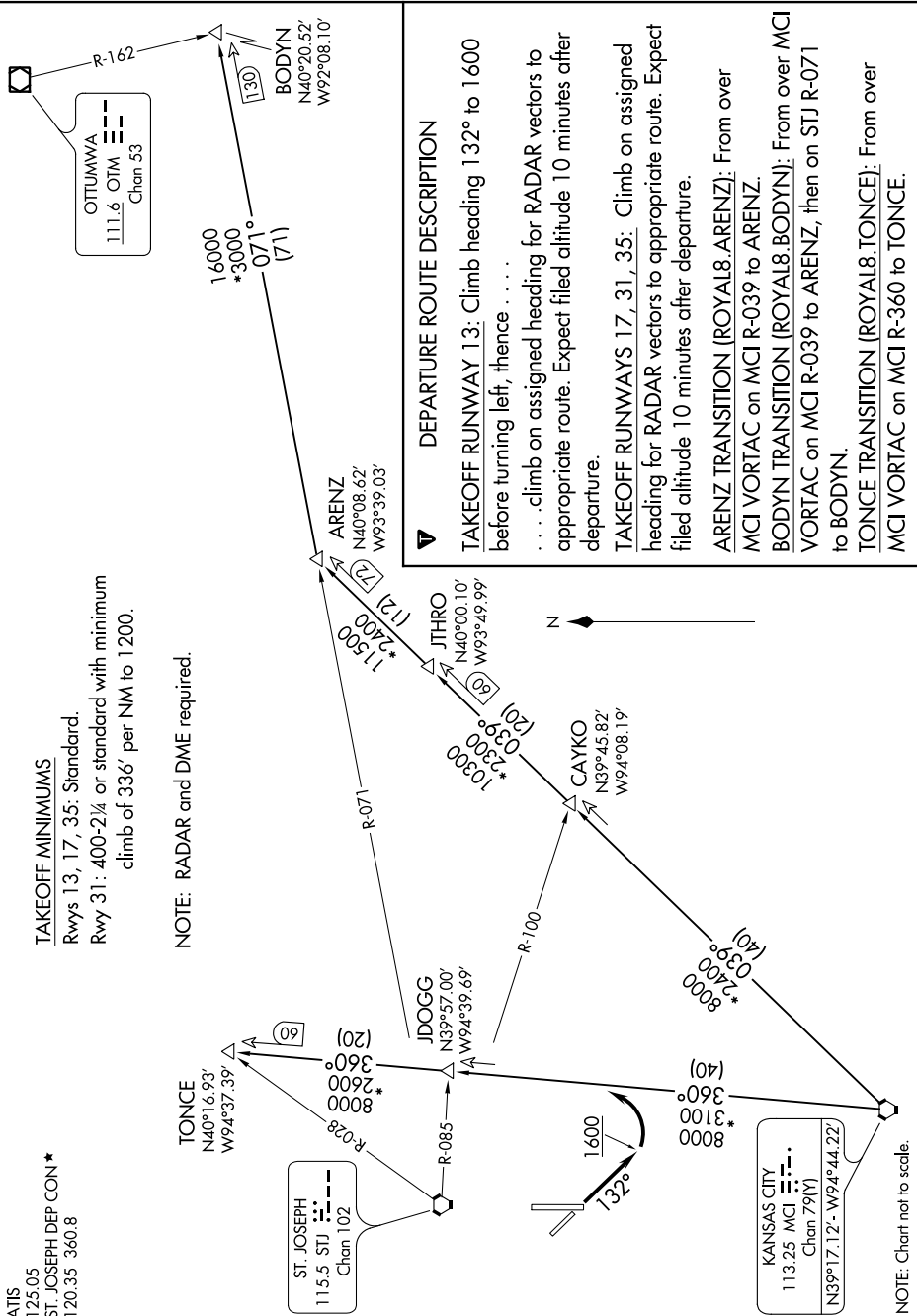
ATIS
125.05
ST. JOSEPH DEP CON *
120.35 360.8

TAKEOFF MINIMUMS

Rwys 13, 17, 35: Standard

Rwy 31: 400-2¼ or standard with minimum climb of 336' per NM to 1200.

NOTE: RADAR and DME required.



DEPARTURE ROUTE DESCRIPTION

TAKEOFF RUNWAY 13: Climb heading 132° to 1600 before turning left, thence . . .

. . . climb on assigned heading for RADAR vectors to appropriate route. Expect filed altitude 10 minutes after departure.

TAKEOFF RUNWAYS 17, 31, 35: Climb on assigned heading for RADAR vectors to appropriate route. Expect filed altitude 10 minutes after departure.

ARENZ TRANSITION (ROYAL8.ARENZ): From over MCI VORTAC on MCI R-039 to ARENZ.

BODYN TRANSITION (ROYAL8.BODYN): From over MCI VORTAC on MCI R-039 to ARENZ, then on STJ R-071 to BODYN.

TONCE TRANSITION (ROYAL8.TONCE): From over MCI VORTAC on MCI R-360 to TONCE.

NOTE: Chart not to scale.

NC-3, 09 NOV 2017 to 07 DEC 2017

ROYAL EIGHT DEPARTURE

(ROYAL8.MCI) 17AUG17

ST. JOSEPH, MISSOURI

ROSECRANS MEMORIAL (STJ)