

| | | | |
|---------------------------------|------------------------|-----------------------------|---|
| WAAS CH 77819 W35A | APP CRS 356° | Rwy Idg TDZE Apt Elev | 8061 815 827 |
|---------------------------------|------------------------|-----------------------------|---|

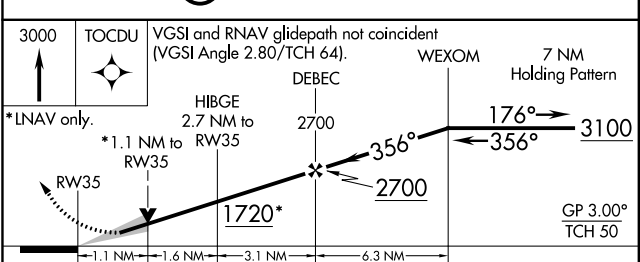
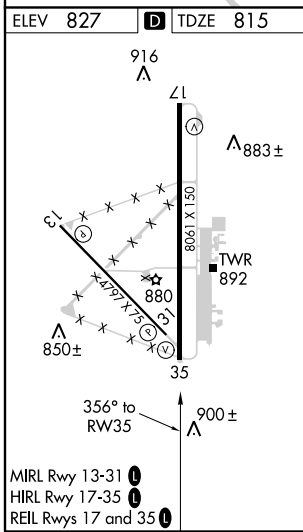
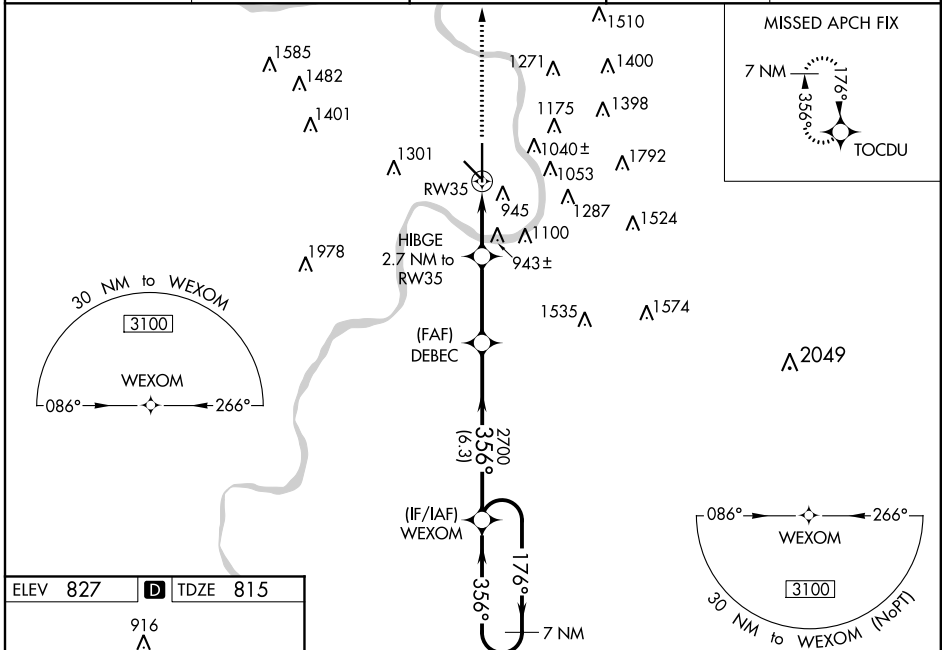
RNAV (GPS) RWY 35

ROSECRANS MEMORIAL (STJ)

⚠ For uncompensated Baro-VNAV systems, LNAV/VNAV NA below -20°C (-4°F) or above 54°C (130°F). DME/DME RNP-0.3 NA. VDP and Baro-VNAV NA when using Kansas City ASR/PAR Inrl altimeter setting. When local altimeter setting not received, use Kansas City Intl altimeter setting and increase all DA 97 feet and increase LPV all Cats visibility to RVR 5000, and LNAV/VNAV all Cats visibility to 1¼ mile; increase all MDA 100 feet, and increase LNAV Cat C/D/E visibility ¼ mile, and Circling Cat C ½ mile, Cat D ½ mile.

MISSED APPROACH:
Climb to 3000 direct TOCDU and hold.

| | | | | |
|-----------------------|---|---|-------------------------|-------------------------|
| ATIS 125.05 | ST. JOSEPH APP CON ★ 120.35 360.8 | ST. JOSEPH TOWER ★ 126.9 (CTAF) 0 239.0 | GND CON 121.9 | UNICOM 122.95 |
|-----------------------|---|---|-------------------------|-------------------------|



| CATEGORY | A | B | C | D | E |
|-------------------|-----------------------|-----------------------|-------------------------|-------------------------|------------------------|
| LPV DA | 1015/40 200 (200-¾) | | | | |
| LNAV/VNAV DA | 1096/45 281 (300-⅞) | | | | |
| LNAV MDA | 1200/55 385 (400-1¼) | | 1200/60 385 (400-1¼) | | |
| C CIRCLING | 1400-1 573 (600-1) | 1420-1 593 (600-1) | 1620-2¼ 793 (800-2¼) | 1640-2¾ 813 (900-2¾) | 1760-3 933 (1000-3) |

NC-3, 09 NOV 2017 to 07 DEC 2017

NC-3, 09 NOV 2017 to 07 DEC 2017