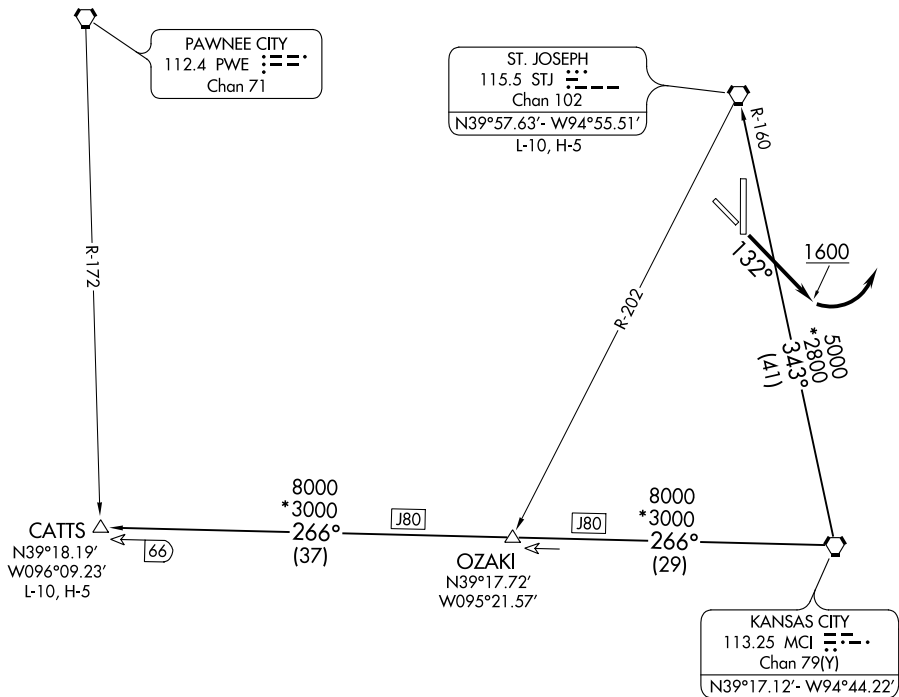


(CHIEF6.MCI) 17229  
**CHIEF SIX DEPARTURE**

AL-359 (FAA)

ROSECRANS MEMORIAL (STJ)  
 ST. JOSEPH, MISSOURI

ATIS 125.05  
 ST. JOSEPH DEP CON \*  
 120.35 360.8



NOTE: RADAR required.

**TAKEOFF MINIMUMS**

Rwys 13, 17, 35: Standard.

Rwy 31: 400-2¼ or standard with minimum climb of 336' per NM to 1200.

NOTE: Chart not to scale



**DEPARTURE ROUTE DESCRIPTION**

**TAKEOFF RUNWAY 13:** Climb heading 132° to 1600 before turning left, thence. . .

. . . climb on assigned heading for RADAR vectors to appropriate route. Expect filed altitude 10 minutes after departure.

**TAKEOFF RUNWAYS 17, 31, 35:** climb on assigned heading for RADAR vectors to appropriate route. Expect filed altitude 10 minutes after departure.

**CATTS TRANSITION (CHIEF6.CATTS):** From over MCI VORTAC on MCI R-266 to CATTS INT.

**ST. JOSEPH TRANSITION (CHIEF6.STJ):** From over MCI VORTAC on MCI R-343 and STJ R-160 to STJ VORTAC.

**CHIEF SIX DEPARTURE**  
 (CHIEF6.MCI) 17AUG17

ST. JOSEPH, MISSOURI  
 ROSECRANS MEMORIAL (STJ)

NC-3, 04 JAN 2018 to 01 FEB 2018

NC-3, 04 JAN 2018 to 01 FEB 2018