

| | | | |
|--|------------------------|-----------------------------|---|
| WAAS CH 77610 W16A | APP CRS 165° | Rwy Idg TDZE Apt Elev | 5000 885 885 |
|--|------------------------|-----------------------------|---|

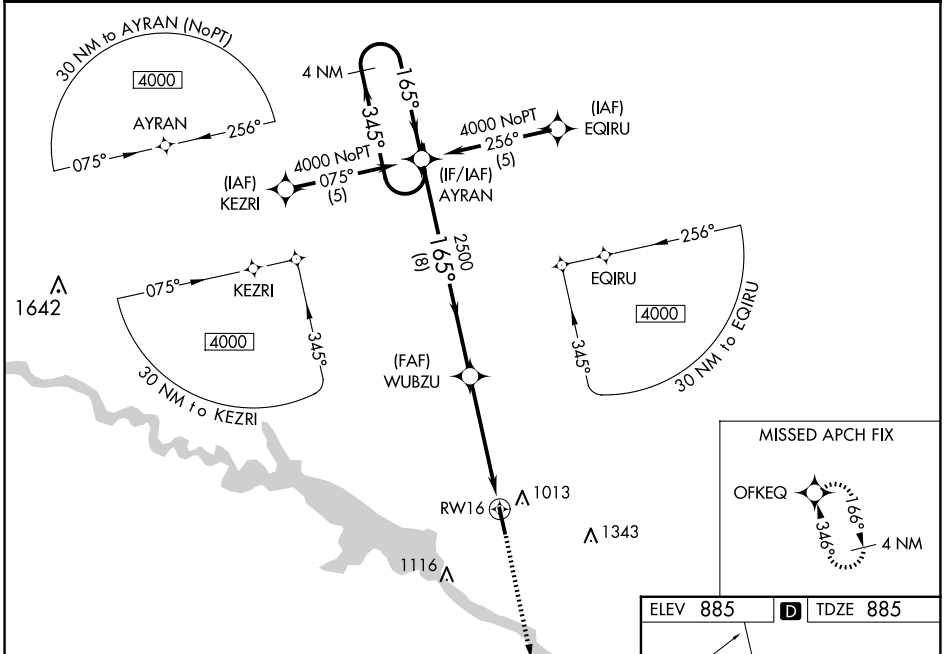
RNAV (GPS) RWY 16

PELLA MUNI (PEA)

⚠ DME/DME RNP -0.3 NA. Visibility reduction by helicopters NA. Baro-VNAV NA when using Knoxville altimeter setting. For uncompensated Baro-VNAV systems, LNAV/VNAV NA below -16°C (4°F) or above 54°C (130°F). When local altimeter setting not received, use Knoxville altimeter setting: increase LPV DA to 1261 feet; increase LNAV/VNAV DA to 1317 feet; increase all MDAs 40 feet and Circling visibility Cat C ¼ SM.

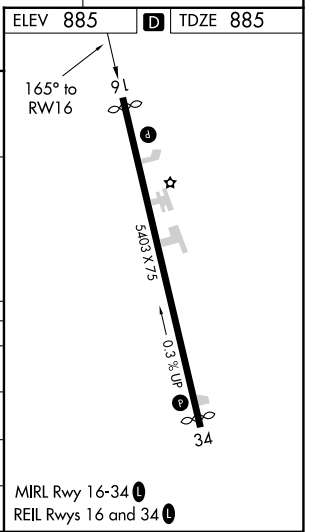
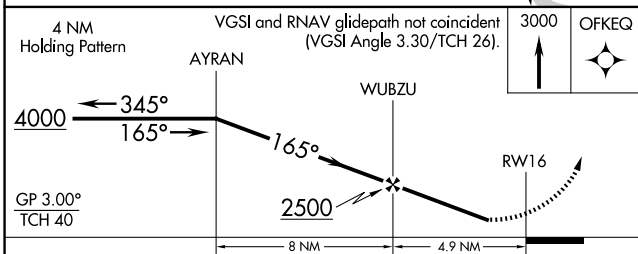
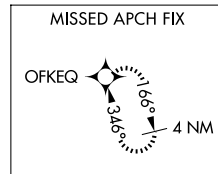
MISSED APPROACH: Climb to 3000 direct OFKEQ and hold.

| | | |
|--------------------------|---|-------------------------------|
| AWOS-3 118.875 | DES MOINES APP CON 123.9 307.15 | UNICOM 122.8 (CTAF) |
|--------------------------|---|-------------------------------|



NC-3, 07 AUG 2025 to 04 SEP 2025

NC-3, 07 AUG 2025 to 04 SEP 2025



| CATEGORY | A | B | C | D |
|--------------|-----------------------|-----------------------|-------------------------|----|
| LPV DA | 1232-1¼ | 347 (400-1¼) | | NA |
| LNAV/VNAV DA | 1288-1½ | 403 (500-1½) | | NA |
| LNAV MDA | 1360-1 | 475 (500-1) | 1360-1¼ 475 (500-1¼) | NA |
| CIRCLING | 1380-1 495 (500-1) | 1420-1 535 (600-1) | 1480-1½ 595 (600-1½) | NA |

MIRL Rwy 16-34
REIL Rwy 16 and 34