

WAAS CH 48936 W31A	APP CRS 306°	Rwy Idg TDZE Apt Elev	5007 973 975
--	------------------------	-----------------------------	---

RNAV (GPS) RWY 31

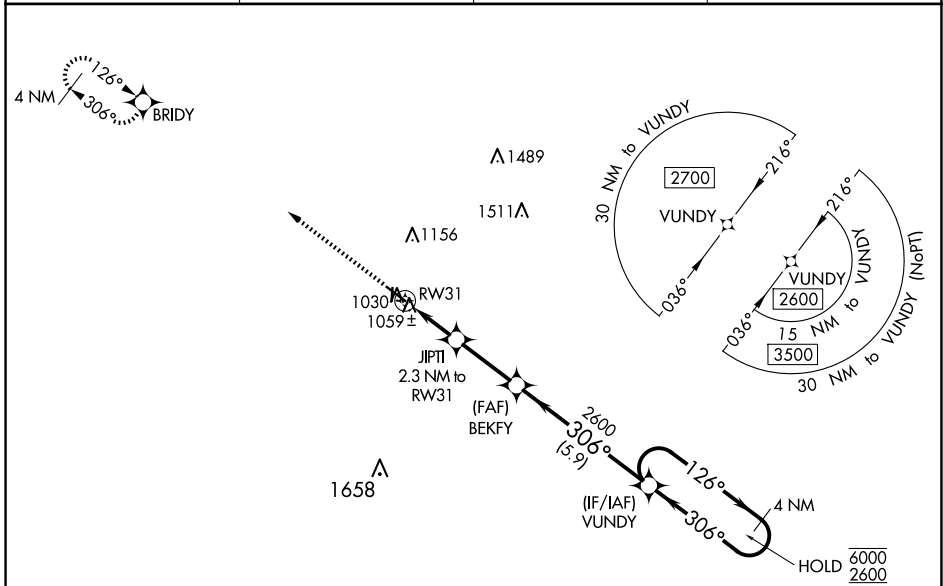
MARSHALLTOWN MUNI (MIW)

RNP APCH.

▼ Baro-VNAV and VDP NA when using Grinnell altimeter setting. Rwy 31 Helicopter visibility reduction below 3/4 SM NA. For uncompensated Baro-VNAV systems, LNAV/VNAV NA below -22°C or above 54°C. When local altimeter setting not received, use Grinnell altimeter setting and increase all DA 64 feet and all MDA 80 feet; increase LPV and LNAV/VNAV all Cats visibility 1/8 SM and LNAV Cats C/D and Circling Cat D visibility 1/4 SM. Circling Rwy 18, 36 NA at night.

▲ MISSED APPROACH: Climb to 2700 direct BRIDY and hold.

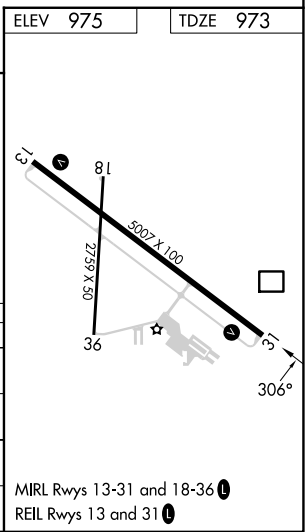
ASOS 128.325	WATERLOO APP CON * 120.9	CLNC DEL 120.9	UNICOM 122.8 (CTAF) 0
------------------------	------------------------------------	--------------------------	---------------------------------



NC-3, 15 MAY 2025 to 12 JUN 2025

NC-3, 15 MAY 2025 to 12 JUN 2025

ELEV 975	TDZE 973			
2700 BRIDY	BEKFY VUNDY 4 NM Holding Pattern			
*LNAV only	JIPTI 2.3 NM to RW31			
1 NM to RW31	1740			
GP 3.00° TCH 37	6000 2600			
1 NM 1.3 NM 2.7 NM 5.9 NM				
CATEGORY	A	B	C	D
LPV DA		1223-1	250 (300-1)	
LNAV/VNAV DA		1223-1	250 (300-1)	
LNAV MDA		1320-1	347 (400-1)	
C CIRCLING	1400-1 425 (500-1)	1440-1 465 (500-1)	1460-1½ 485 (500-1½)	1840-2¾ 865 (900-2¾)



MIRL Rwy 13-31 and 18-36 **0**
REIL Rwy 13 and 31 **0**