

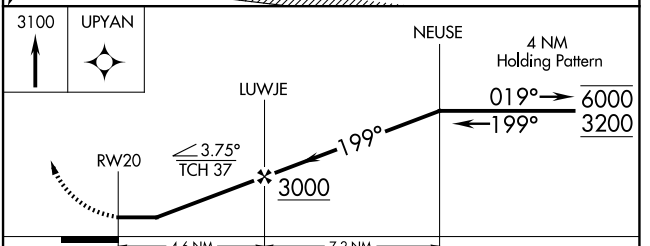
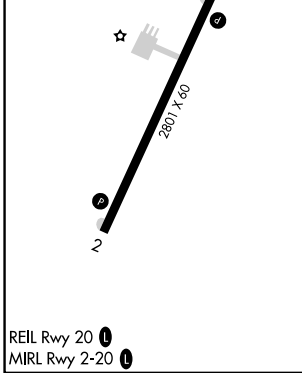
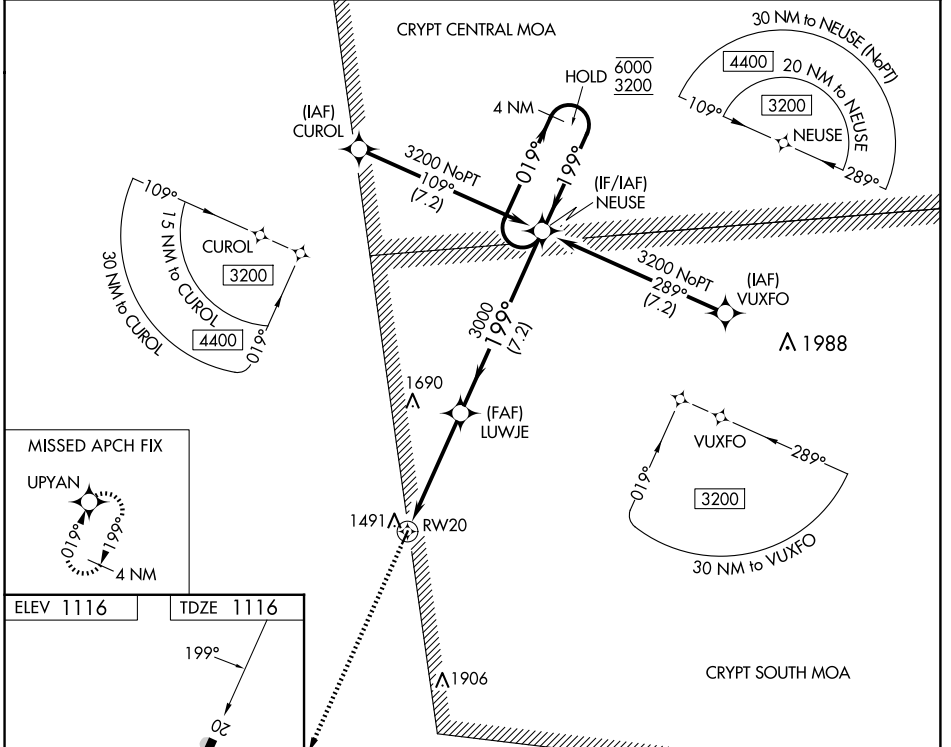
APP CRS	Rwy Idg	<b>2801</b>
<b>199°</b>	TDZE	<b>1116</b>
	Apt Elev	<b>1116</b>

# RNAV (GPS) RWY 20

JAMES G WHITING MEML FLD (MEY)

RNP APCH - GPS.		MISSED APPROACH: Climb to 3100 direct UPYAN and hold.
<p><b>▼</b> Procedure NA at night. Rwy 20 helicopter visibility reduction below 1 SM NA.</p> <p><b>▲</b> NA Use Sioux City altimeter setting, when not received use Denison altimeter setting and increase all MDAs 20 feet and increase visibility LNAV Cat C ½ SM and visibility Circling Cat C ¼ SM.</p>		

SUX ASOS <b>119.45 270.8</b>	SIoux CITY APP CON★ <b>124.6 307.0</b>	UNICOM <b>122.8 (CTAF)</b>
---------------------------------	---	-------------------------------



CATEGORY	A	B	C	D
LNAV MDA	1860-1 744 (800-1)	1860-1¼ 744 (800-1¼)	1860-2 744 (800-2)	NA
<b>C</b> CIRCLING	1880-1 764 (800-1)	1940-1¼ 824 (900-1¼)	1980-2½ 864 (900-2½)	NA

NC-3, 15 MAY 2025 to 12 JUN 2025

NC-3, 15 MAY 2025 to 12 JUN 2025