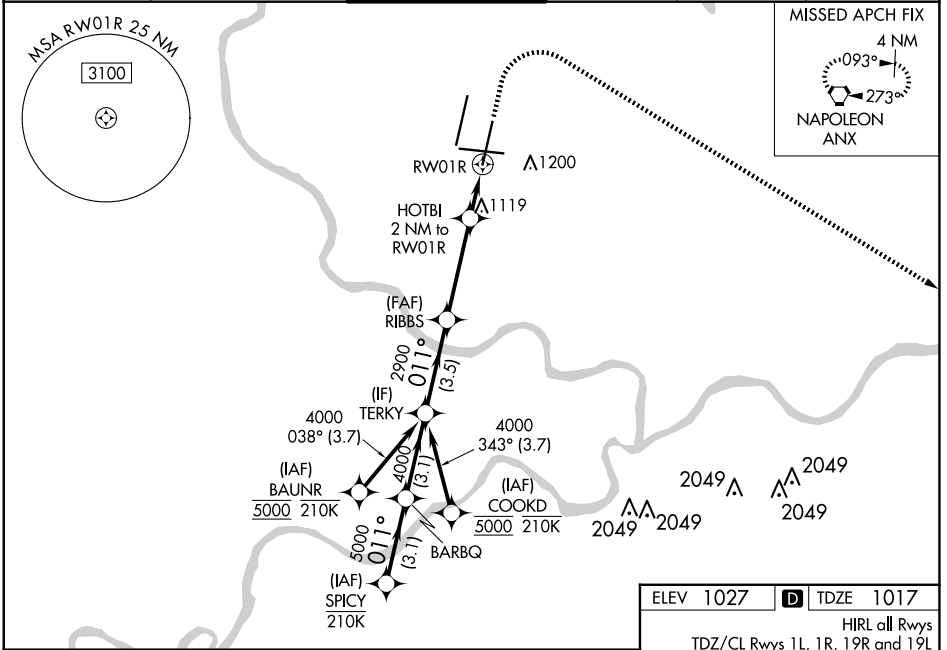


WAAS CH <b>58208</b> W01A	APP CRS <b>011°</b>	Rwy Idg <b>9500</b> TDZE <b>1017</b> Apt Elev <b>1027</b>
---------------------------------	------------------------	---

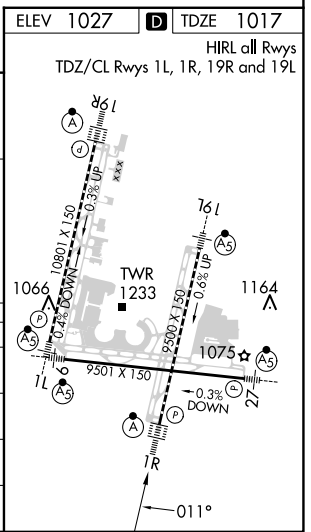
# RNAV (GPS) Y RWY 1R

KANSAS CITY INTL (MCI)

RNP APCH - GPS.		ALSF-2 	MISSED APPROACH: Climb to 1500 then climbing right turn to 4000 direct ANX VORTAC and hold.				
<p>▼ LNAV procedure NA during simultaneous operations. Use of FD or AP required during simultaneous operations. For uncompensated Baro-VNAV systems, LNAV/VNAV NA below -19°C or above 54°C. Simultaneous approach authorized except from BAUNR or COOKD. For inop ALS, increase LNAV/VNAV all Cats visibility to RVR 4500 and LNAV Cats C/D visibility to RVR 5500.</p>			D-ATIS <b>128.375</b>	KANSAS CITY APP CON <b>120.95 318.1</b>	INTERNATIONAL TOWER <b>128.2 254.25</b>	GND CON <b>121.8</b>	CLNC DEL <b>135.7</b>



SPICY	BARBQ	TERKY	RIBBS	HOTBI 2 NM to RWY 1R	ANX
6000	5000	4000	2900	1700	1500 4000
GP 3.00° TCH 59					
VGSI and RNAV glidepath not coincident (VGSI Angle 3.00/TCH 74).					
CATEGORY	A		B		D
LPV DA	1217/18		200 (200-½)		
LNAV/VNAV DA	1311/24		294 (300-½)		
LNAV MDA	1380/24	363 (400-½)	1380/35	363 (400-¾)	
CIRCLING	1540-1	513 (600-1)	1540-1½ 513 (600-1½)	1580-2 553 (600-2)	



NC-3, 15 MAY 2025 to 12 JUN 2025

NC-3, 15 MAY 2025 to 12 JUN 2025