

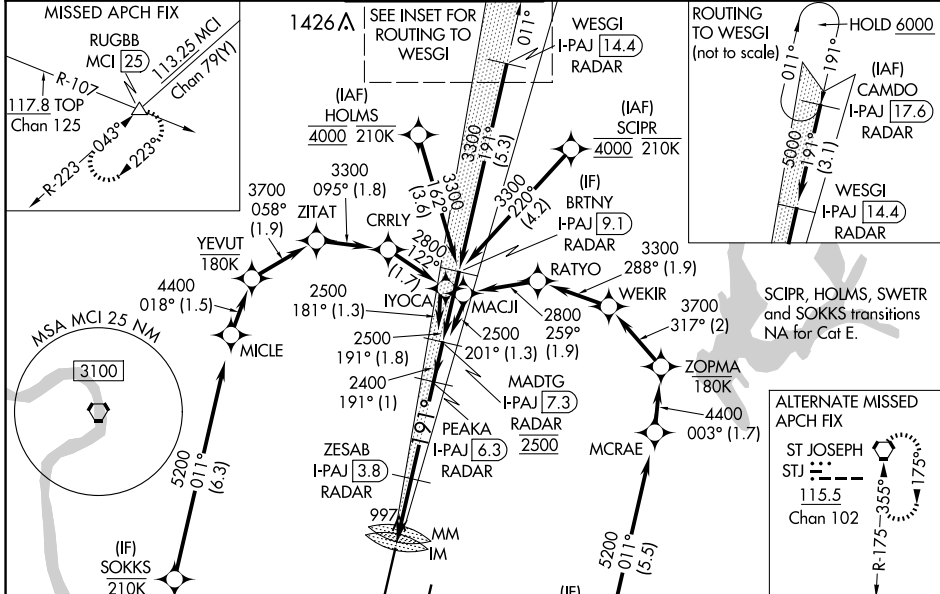
LOC/DME I-PAJ 109.1 Chan 28	APP CRS 191°	Rwy Idg 10801 TDZE 991 Apt Elev 1027
--	------------------------	---

ILS or LOC RWY 19R

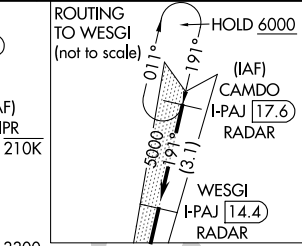
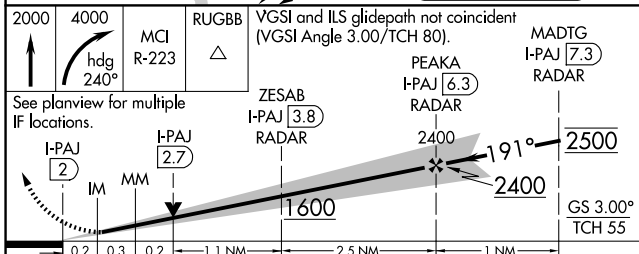
KANSAS CITY INTL (MCI)

RNP APCH - GPS. From SCIPR or HOLMS or SWETR or SOKKS.		ALSF-2 	MISSED APPROACH: Climb to 2000 then climbing right turn to 4000 on heading 240° and MCI VORTAC R-223 to RUGBB INT/MCI 25 DME and hold.
DME or RADAR required. RADAR required for procedure entry at CAMDO.			
<p>▼ For inop ALS, increase S-ILS 19R Cat E visibility to RVR 4000 and S-LOC 19R Cat C/D/E to RVR 4500. Simultaneous approach authorized except from SCIPR, HOLMS, SOKKS and SWETR.</p>			

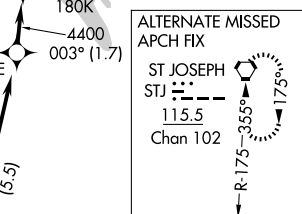
D-ATIS 128.375	KANSAS CITY APP CON 120.95 318.1	INTERNATIONAL TOWER 128.2 254.25	GND CON 121.8	CLNC DEL 135.7	CPDLC
--------------------------	--	--	-------------------------	--------------------------	-------



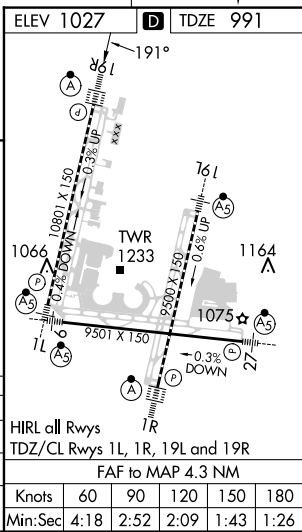
ELEV 1027	D TDZE 991
LOCALIZER 109.1 I-PAJ Chan 28	



SCIPR, HOLMS, SWETR and SOKKS transitions NA for Cat E.



CATEGORY	A	B	C	D	E
S-ILS 19R		1191/18	200 (200-½)		
S-LOC 19R		1280/24	289 (300-½)		
C CIRCLING	1540-1	513 (600-1)	1540-1½ 513 (600-1½)	1580-2	553 (600-2)



NC-3, 15 MAY 2025 to 12 JUN 2025

NC-3, 15 MAY 2025 to 12 JUN 2025