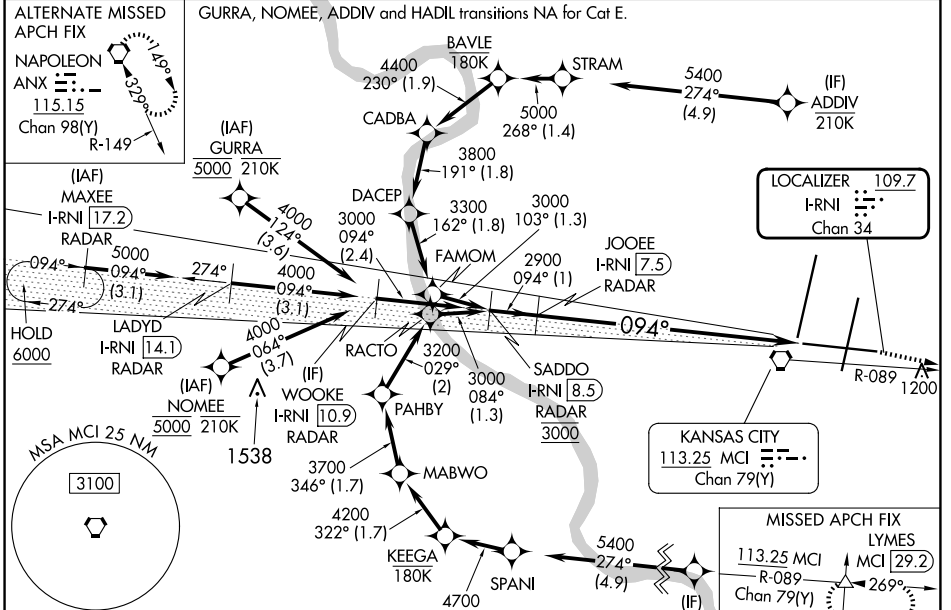


LOC/DME I-RNI 109.7 Chan 34	APP CRS 094°	Rwy Idg TDZE Apt Elev	9501 1016 1027
---	------------------------	-----------------------------	---

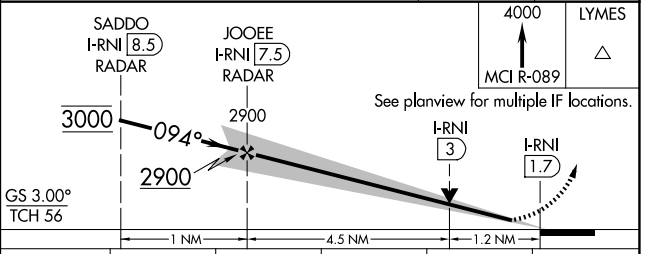
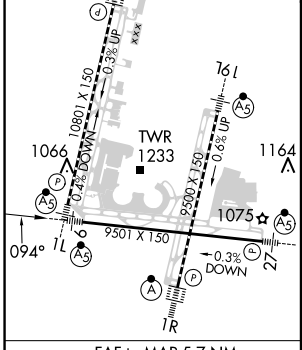
ILS or LOC RWY 9

KANSAS CITY INTL (MCI)

RNP APCH-GPS. From GURRA or NOMEIE or ADDIV or HADIL.		MALSR 	MISSED APPROACH: Climb to 4000 on MCI R-089 to LYMES INT/MCI 29.2 DME and hold.		
DME or RADAR required. RADAR required for procedure entry at MAXEE.					
<p>▼ Inop table does not apply to S-ILS 9. For inop ALS, increase S-LOC 9 Cats A/B visibility to RVR 5500 and S-LOC 9 Cat E visibility to 1 3/4 SM.</p>					
D-ATIS 128.375	KANSAS CITY APP CON 120.95 318.1	INTERNATIONAL TOWER 128.2 254.25	GND CON 121.8	CLNC DEL 135.7	CPDLC



ELEV 1027	TDZE 1016
TDZ/CL Rwys 1L, 1R, 19L and 19R HIRL all Rwys	



GS 3.00° TCH 56					
CATEGORY	A	B	C	D	E
S-ILS 9	1266/40 250 (300-3/4)				
S-LOC 9	1460/40	444 (500-3/4)	1460/45 444 (500-3/4)		
CIRCLING	1540-1	513 (600-1)	1540-1 1/2	1580-2 553 (600-2)	
			513 (600-1 1/2)		

NC-3, 15 MAY 2025 to 12 JUN 2025

NC-3, 15 MAY 2025 to 12 JUN 2025