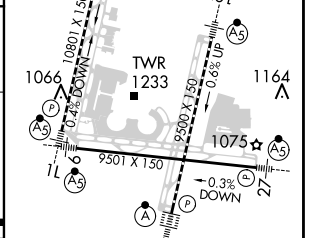
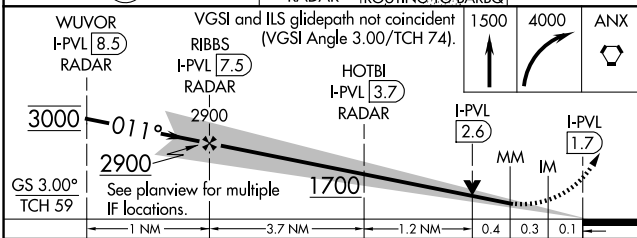
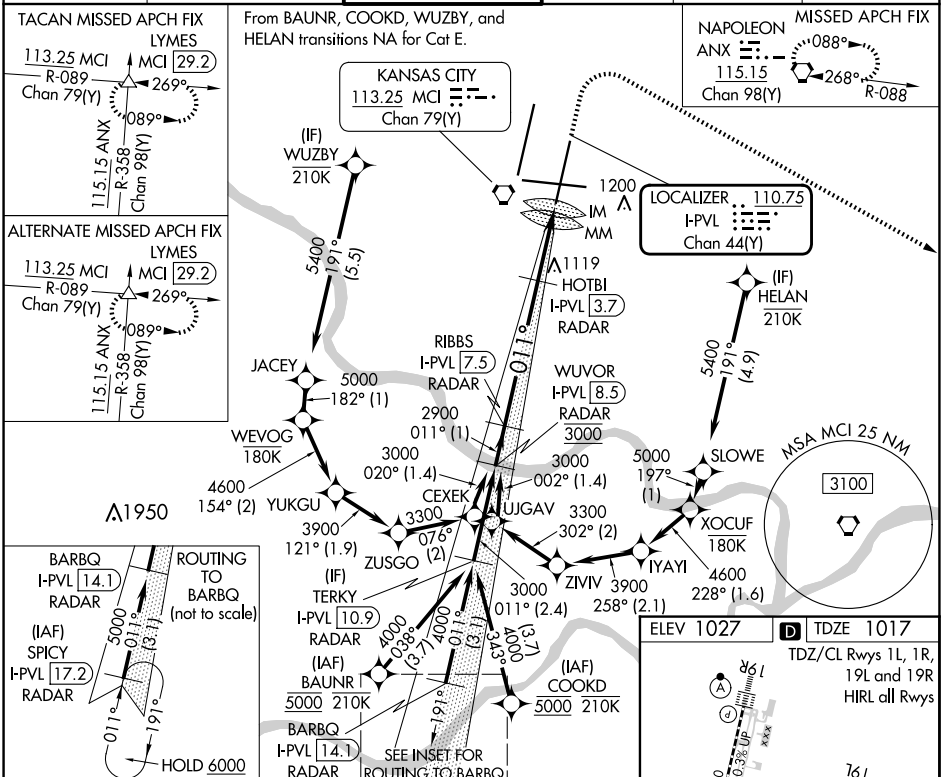


LOC/DME I-PVL 110.75 Chan 44 (Y)	APP CRS 011°	Rwy Idg TDZE 1017 Apt Elev 1027	9500
--	------------------------	---	-------------

ILS or LOC RWY 1R

KANSAS CITY INTL (MCI)

RNP APCH - GPS. From BAUNR or COOKD or WUZBY or HELAN.		ALSF-2 	MISSED APPROACH: Climb to 1500 then climbing right turn to 4000 direct ANX VORTAC and hold. (TACAN aircraft) Climb to 1500 then climbing right turn to 4000 on heading 130° and MCI R-089 to LYMES INT/ MCI 29.2 DME and hold.		
DME or RADAR required. RADAR required for procedure entry at SPICY.					
<p>▼ For inop ALS, increase S-ILS 1R Cat E visibility to RVR 4000 and S-LOC 1R Cat C/D/E visibility to RVR 5500. Simultaneous approach authorized except from BAUNR, COOKD, WUZBY, and HELAN.</p>					
D-ATIS 128.375	KANSAS CITY APP CON 120.95 318.1	INTERNATIONAL TOWER 128.2 254.25	GND CON 121.8	CLNC DEL 135.7	CPDLC



CATEGORY	A	B	C	D	E
S-ILS 1R	1217/18 200 (200-½)				
S-LOC 1R	1360/24	343 (400-½)	1360/30		343 (400-¾)
CIRCLING	1540-1	513 (600-1)	1540-1½	513 (600-1½)	1580-2 553 (600-2)
FAF to MAP 5.7 NM					
Knots	60	90	120	150	180
Min:Sec	5:42	3:48	2:51	2:17	1:54

NC-3, 15 MAY 2025 to 12 JUN 2025

NC-3, 15 MAY 2025 to 12 JUN 2025