

APP CRS <b>152°</b>	Rwy Idg <b>4504</b>
	TDZE <b>268</b>
	Apt Elev <b>269</b>

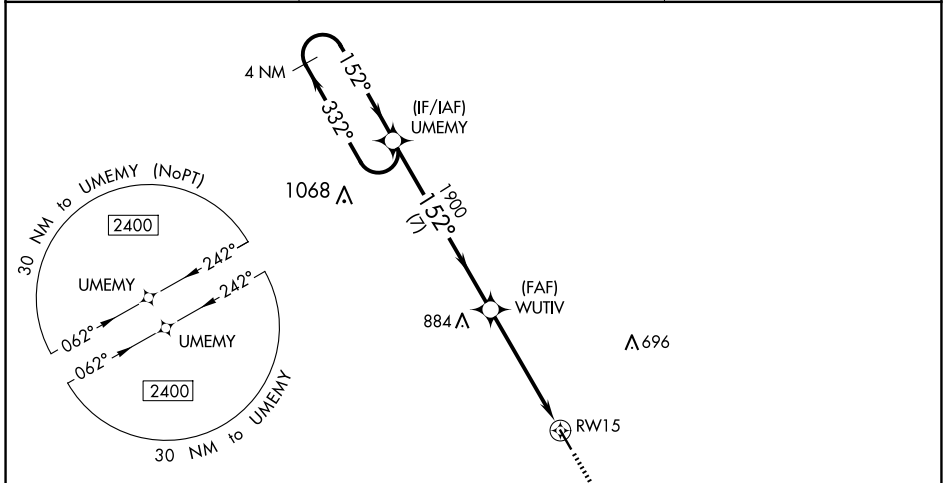
# RNAV (GPS) RWY 15

GIDEON MEML (M85)

**⚠** DME/DME RNP-0.3 NA. Procedure NA at night. Helicopter visibility reduction below 1 SM NA. Obtain Arkansas Intl altimeter setting on CTAF (122.7), when not received, use Poplar Bluff Muni altimeter setting and increase all MDA 20 feet and Circling Cat C visibility 1/8 mile.

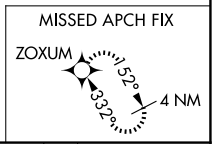
**MISSED APPROACH:** Climb to 2400 direct ZOXUM and hold.

BYH CTAF <b>122.7</b>	MEMPHIS CENTER <b>133.65 292.15</b>	CTAF <b>122.9</b>
--------------------------	--	----------------------

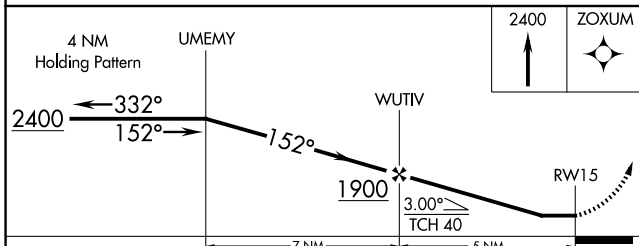
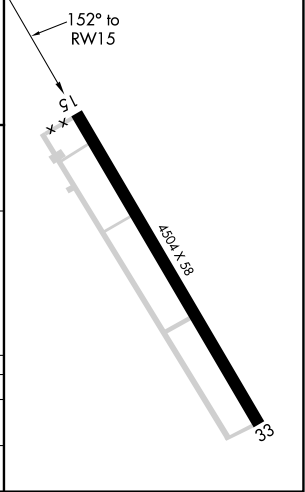


NC-3, 15 MAY 2025 to 12 JUN 2025

NC-3, 15 MAY 2025 to 12 JUN 2025



ELEV 269	TDZE 268
----------	----------



CATEGORY	A	B	C	D
RNAV MDA	820-1	552 (600-1)	820-1 5/8 552 (600-1 5/8)	NA
CIRCLING	860-1	591 (600-1)	900-1 3/4 631 (700-1 3/4)	NA