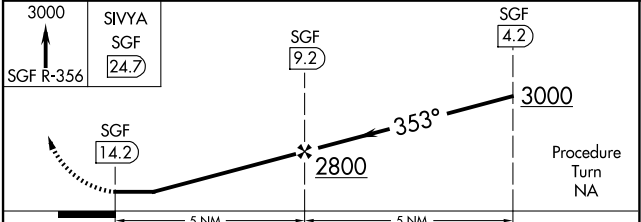
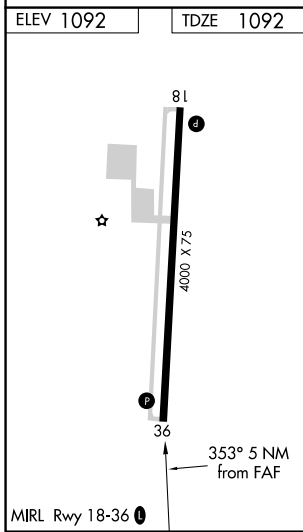
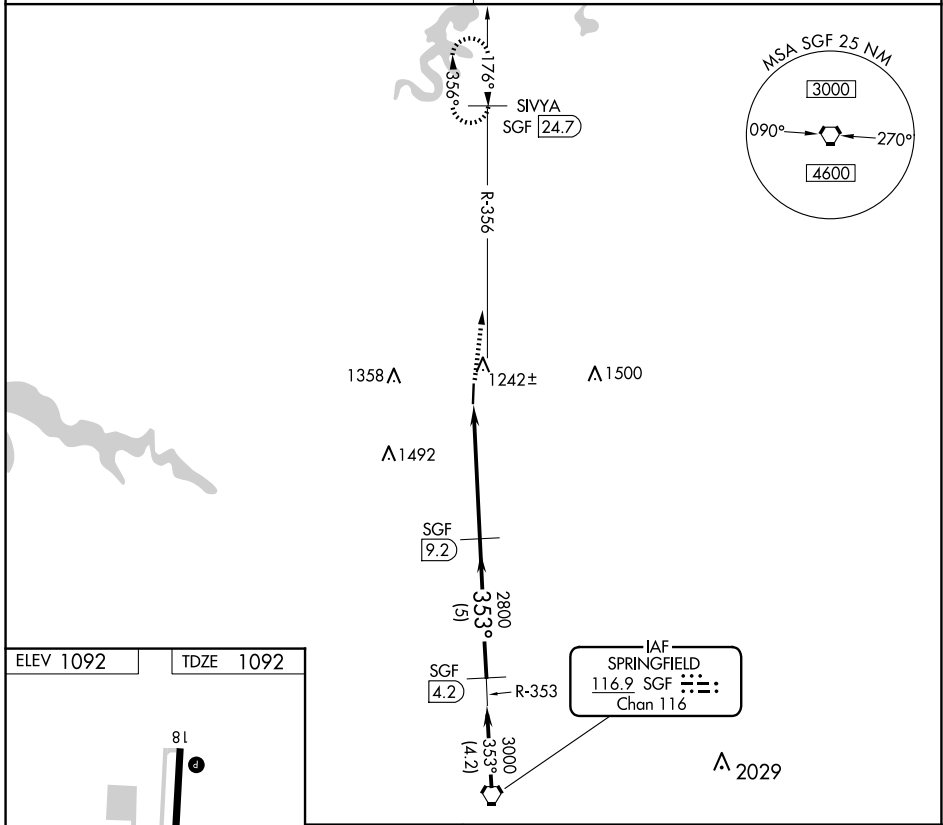


|   |                        |   |
|---|------------------------|---|
| VORTAC SGF<br><b>116.9</b><br>Chan <b>116</b> | APP CRS<br><b>353°</b> | Rwy Idg<br>TDZE <b>1092</b><br>Apt Elev <b>1092</b> |
|---|------------------------|---|

# VOR/DME RWY 36

BOLIVAR MUNI (M17)

|   |   |
|---|---|
| <p><b>▽</b> Use Springfield-Branson Ntl altimeter setting.<br/><b>△</b> NA Circling Rwy 18 NA at night.</p> | <p>MISSED APPROACH: Climb to 3000 via SGF R-356 to SIVYA/SGF 24.7 DME and hold.</p> |
| <p>SPRINGFIELD APP CON<br/><b>124.95 318.2</b></p>  | <p>UNICOM<br/><b>123.0</b> (CTAF) <b>0</b></p>                                      |



| CATEGORY          | A      | B           | C | D  |
|-------------------|--------|-------------|---|----|
| S-36              | 1700-1 | 608 (700-1) |   | NA |
| <b>C</b> CIRCLING | 1700-1 | 608 (700-1) |   | NA |

NC-3, 15 MAY 2025 to 12 JUN 2025

NC-3, 15 MAY 2025 to 12 JUN 2025