

WAAS CH <b>82204</b> <b>W18A</b>	APP CRS <b>181°</b>	Rwy Idg TDZE Apt Elev	<b>5501</b> <b>999</b> <b>1004</b>
--	------------------------	-----------------------------	--

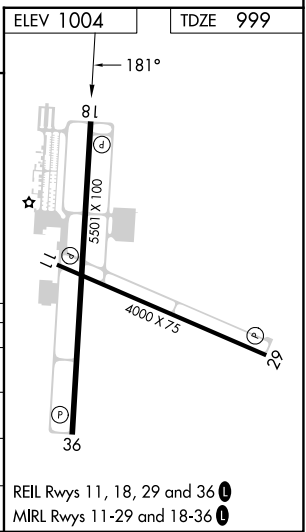
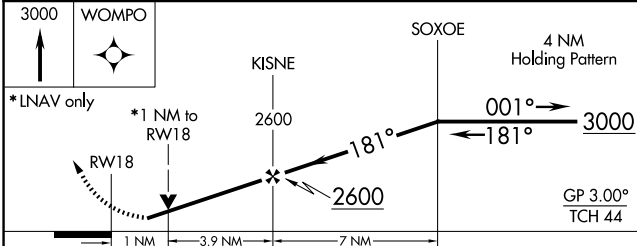
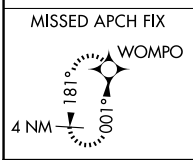
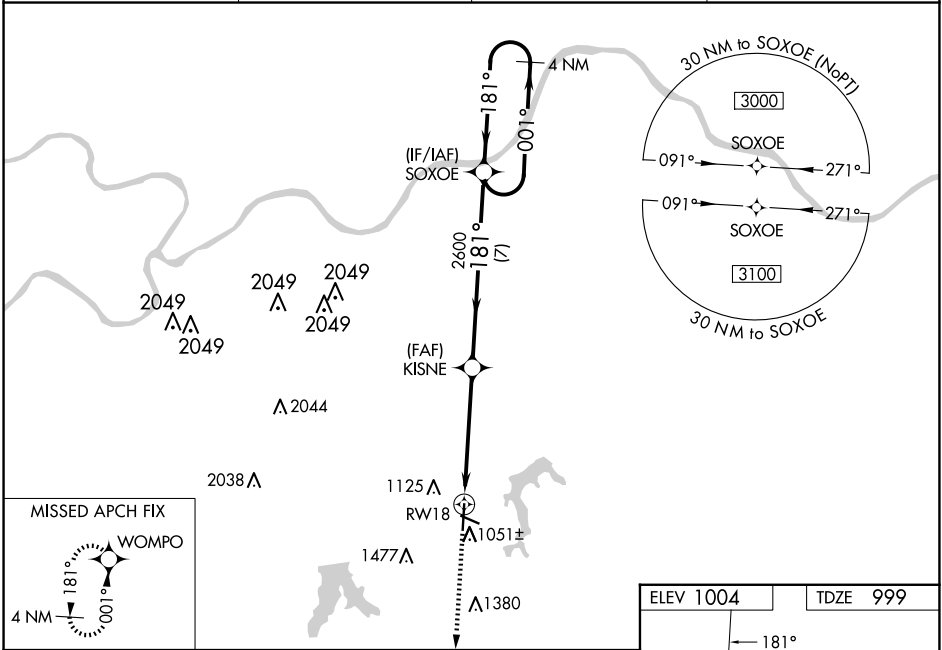
# RNAV (GPS) RWY 18

KANSAS CITY/LEE'S SUMMIT RGNL (LX'T)

**⚠** For uncompensated Baro-VNAV systems, LNAV/VNAV NA below -17°C (2°F) or above 54°C (130°F).  
**⚠** Rwy 18 helicopter visibility reduction below 3/4 SM NA. DME/DME RNP-0.3 NA. Baro-VNAV and VDP NA when using Kansas City Downtown/Wheeler Fld altimeter setting. When local altimeter setting not received, use Kansas City Downtown/Wheeler Fld altimeter setting: increase LPV DA to 1317 feet and all visibilities 1/8 SM; increase LNAV/VNAV DA to 1434 feet and all visibilities 1/4 SM; increase all MDA 80 feet and LNAV visibility Cat C and D 3/8 SM, Circling Cats C and D 1/4 SM.

**MISSED APPROACH:**  
Climb to 3000 direct WOMPO and hold.

ASOS <b>124.175</b>	KANSAS CITY APP CON <b>118.4 307.35</b>	CLNC DEL <b>118.45</b>	UNICOM <b>122.8</b> (CTAF) <b>0</b>
------------------------	--	---------------------------	--



CATEGORY	A	B	C	D
LPV DA		1249-3/4	250 (300-3/4)	
LNAV/VNAV DA		1366-1	367 (400-1)	
LNAV MDA		1360-1	361 (400-1)	
<b>CIRCLING</b>	1440-1 436 (500-1)	1540-1 536 (600-1)	1780-2 1/4 776 (800-2 1/4)	1780-2 1/2 776 (800-2 1/2)

NC-3, 07 AUG 2025 to 04 SEP 2025

NC-3, 07 AUG 2025 to 04 SEP 2025