

WAAS CH 78415 W18A	APP CRS 185°	Rwy Idg TDZE Apt Elev	4305 1197 1197
--	------------------------	-----------------------------	---

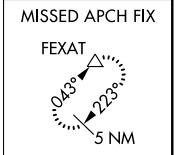
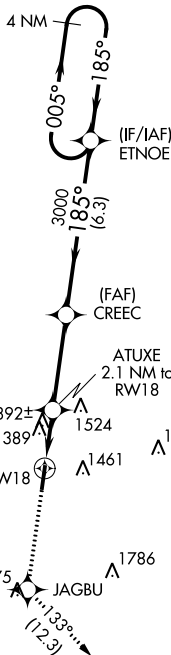
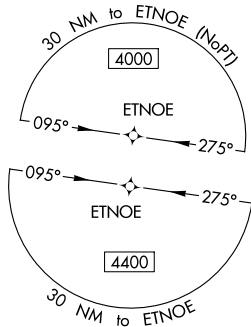
RNAV (GPS) RWY 18

LE MARS MUNI (L.R.J)

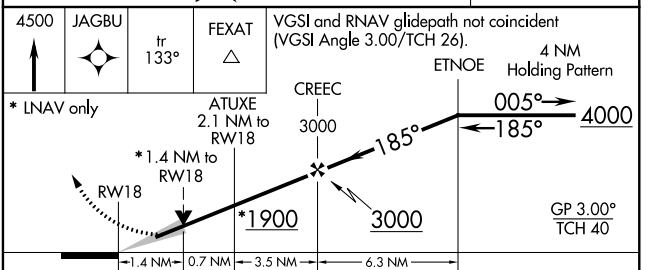
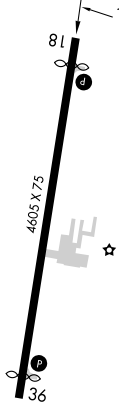
⚠ Baro-VNAV NA when using Orange City altimeter setting. For uncompensated Baro-VNAV systems, LNAV/VNAV NA below -17°C (2°F) or above 54°C (130°F). DME/DME RNP-0.3 NA. When local altimeter setting not received, use Orange City altimeter setting and increase LPV DA to 1510 feet, LNAV/VNAV DA to 1774 feet and LNAV/VNAV all Cats visibility ¼ mile; increase all MDA 80 feet and LNAV Cat C and Circling Cat C visibility ¼ mile. VDP NA with Orange City altimeter setting.

MISSED APPROACH:
Climb to 4500 direct JAGBU and on track 133° to FEXAT and hold.

AWOS-3 125.525	SIoux CITY APP CON * 124.6 307.0	UNICOM 122.8 (CTAF) 0
--------------------------	--	---------------------------------



ELEV 1197	TDZE 1197
-----------	-----------



CATEGORY	A	B	C	D
LPV DA	1447-1 250 (300-1)			NA
LNAV/VNAV DA	1711-1¾ 514 (600-1¾)			NA
LNAV MDA	1660-1	463 (500-1)	1660-1⅜ 463 (500-1⅜)	NA
CIRCLING	1760-1 563 (700-1)	1820-1 623 (700-1)	1820-1¾ 623 (700-1¾)	NA

NC-3, 04 JAN 2018 to 01 FEB 2018

NC-3, 04 JAN 2018 to 01 FEB 2018