

APP CRS	Rwy Idg	<b>5000</b>
<b>359°</b>	TDZE	<b>1321</b>
	Apt Elev	<b>1321</b>

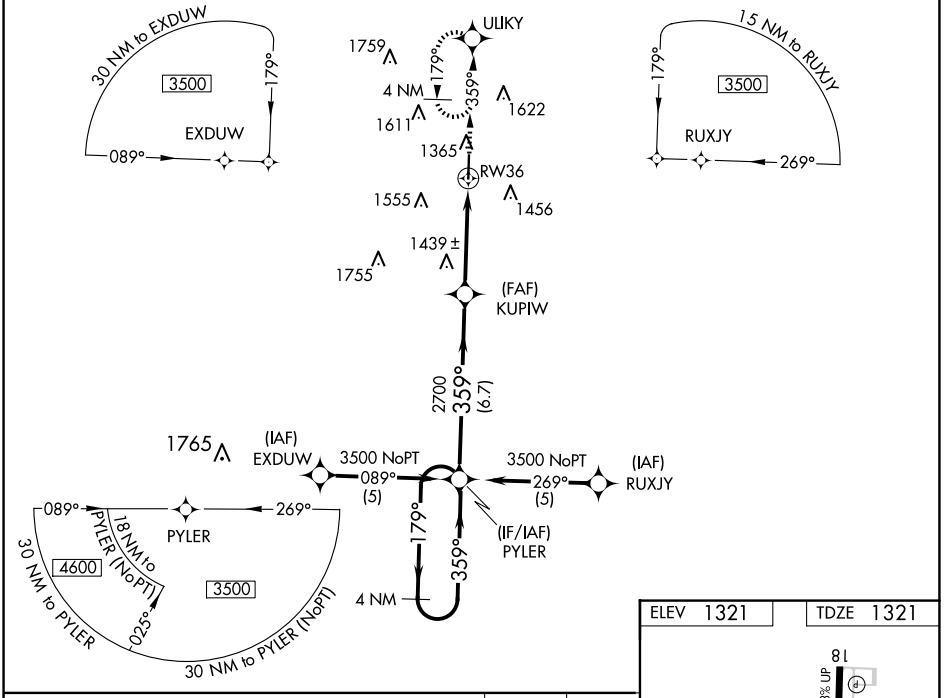
# RNAV (GPS) RWY 36

FLOYD W JONES LEBANON (LBO)

When local altimeter setting not received, use Springfield-Branson Ntl altimeter setting: increase LNAV/VNAV DA to 1786 feet and all visibilities 1/8 SM; increase all MDAs 120 feet and LNAV visibility Cat C 3/8 SM, Cat D 1/8 and Circling visibility Cat C/D 1/2 SM. Baro-VNAV NA when using Springfield-Branson Ntl altimeter setting. Baro-VNAV NA below -17° C (1° F). DME/DME RNP-0.3 NA.

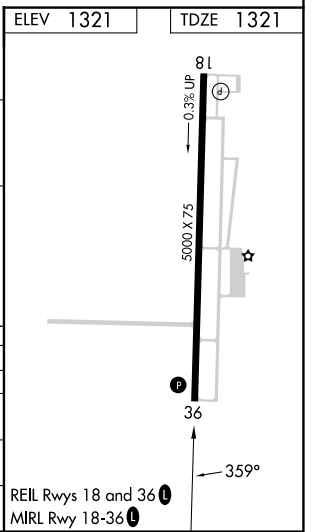
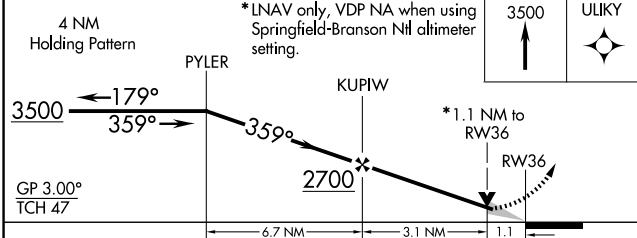
**MISSED APPROACH:** Climb to 3500 direct ULIKY and hold.

AWOS-3PT <b>118.975</b>	SPRINGFIELD APP CON <b>121.1 290.5</b>	CLNC DEL <b>123.725</b>	UNICOM <b>122.8 (CTAF) 0</b>
----------------------------	---	----------------------------	---------------------------------



NC-3, 15 MAY 2025 to 12 JUN 2025

NC-3, 15 MAY 2025 to 12 JUN 2025



GP 3.00° TCH 47	<table border="1"> <tr> <td>4 NM Holding Pattern</td> <td>3500</td> <td>ULIKY</td> </tr> <tr> <td></td> <td>↑</td> <td>✧</td> </tr> </table>				4 NM Holding Pattern	3500	ULIKY		↑	✧
4 NM Holding Pattern	3500	ULIKY								
	↑	✧								
CATEGORY	A	B	C	D						
GLS PA DA	NA									
LNAV/VNAV DA	1680-1¼ 359 (400-1¼)									
LNAV MDA	1700-1 379 (400-1)		1700-1¼ 379 (400-1¼)							
CIRCLING	1820-1 499 (500-1)	1860-1 539 (600-1)	1980-1¾ 659 (700-1¾)	1980-2 659 (700-2)						