

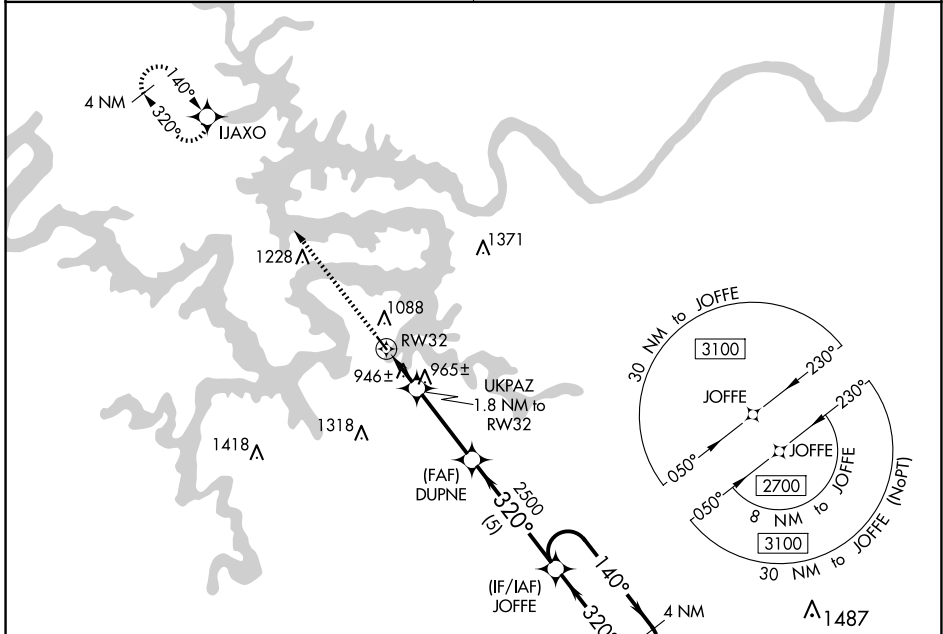
WAAS CH 86832 W32A	APP CRS 320°	Rwy Idg 3205 TDZE 875 Apt Elev 876
--	------------------------	---

RNAV (GPS) RWY 32

GRAND GLAIZE-OSAGE BEACH (K15)

<p>NA DME/DME RNP-0.3 NA. Use Kaiser Lake Ozark altimeter setting; when not received, use Camdenon altimeter setting and increase all MDA 40 feet. Procedure NA at night. Helicopter visibility reduction below 1 SM NA.</p>	<p>MISSED APPROACH: Climb to 2700 direct IJAXO and hold.</p>
---	--

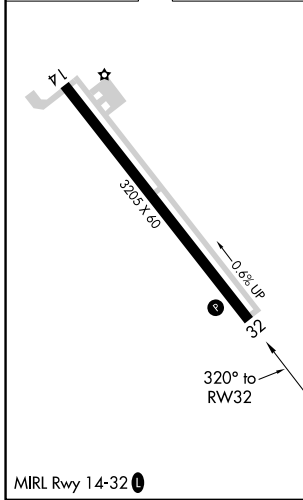
<p>MIZZU APP CON 124.1 353.925</p>	<p>UNICOM 122.8 (CTAF) 1</p>
---	---



NC-3, 15 MAY 2025 to 12 JUN 2025

NC-3, 15 MAY 2025 to 12 JUN 2025

ELEV 876	TDZE 875
----------	----------



<p>2700 IJAXO Visual Segment - Obstacles.</p>	<p>JOFFE 4 NM Holding Pattern</p>																				
<p>UKPAZ 1.8 NM to RW32</p> <p>DUPNE</p> <p>JOFFE 2700</p>	<p>1460 2500</p> <p>140° → ← 320°</p>																				
<p>1.8 NM 3.2 NM 5 NM</p>	<p>320°</p>																				
<table border="1"> <thead> <tr> <th>CATEGORY</th> <th>A</th> <th>B</th> <th>C</th> <th>D</th> </tr> </thead> <tbody> <tr> <td>LP MDA</td> <td>1220-1</td> <td>345 (400-1)</td> <td></td> <td>NA</td> </tr> <tr> <td>LNAV MDA</td> <td>1240-1</td> <td>365 (400-1)</td> <td></td> <td>NA</td> </tr> <tr> <td>CIRCLING</td> <td>1420-1</td> <td>544 (600-1)</td> <td></td> <td>NA</td> </tr> </tbody> </table>	CATEGORY	A	B	C	D	LP MDA	1220-1	345 (400-1)		NA	LNAV MDA	1240-1	365 (400-1)		NA	CIRCLING	1420-1	544 (600-1)		NA	
CATEGORY	A	B	C	D																	
LP MDA	1220-1	345 (400-1)		NA																	
LNAV MDA	1240-1	365 (400-1)		NA																	
CIRCLING	1420-1	544 (600-1)		NA																	