

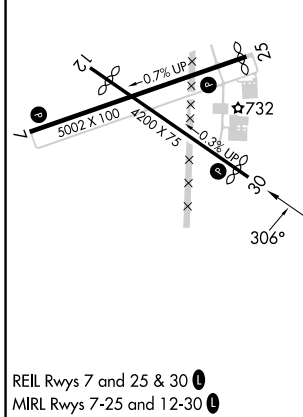
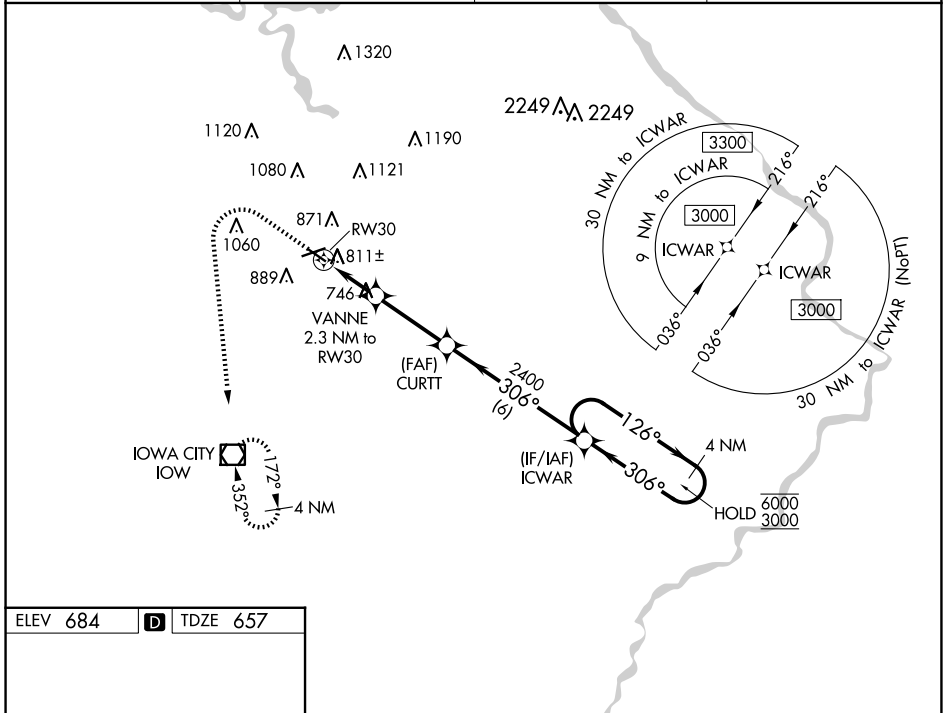
WAAS CH <b>86841</b> <b>W30A</b>	APP CRS <b>306°</b>	Rwy Idg TDZE Apt Elev	<b>3900</b> <b>657</b> <b>684</b>
--	------------------------	-----------------------------	---

# RNAV (GPS) RWY 30

IOWA CITY MUNI (IOW)

RNP APCH - GPS.		MISSED APPROACH: Climb to 1800 then climbing left turn to 3000 direct IOW VOR/DME and hold.
<p><b>▼</b> Rwy 30 helicopter visibility reduction below 1 SM NA. Rwy 30 procedure NA at night. Circling Rwy 12 NA at night. When local altimeter setting not received, use CID altimeter setting and increase all MDA 80 feet and LNAV visibility Cat C/D 1/8 SM and LP and Circling Cat C/D visibility 1/4 SM.</p>		

ASOS <b>128.075</b>	CEDAR RAPIDS APP CON * <b>119.7 266.8</b>	CLNC DEL <b>119.05</b>	UNICOM <b>122.8 (CTAF) 0</b>
------------------------	--	---------------------------	---------------------------------



1800	3000	IOW	VGSI and descent angles not coincident (VGSI Angle 3.00/TCH 33).	
CURTT		ICWAR	4 NM Holding Pattern	
VANNE 2.3 NM to RW30		CURT	ICWAR	
RW30		ICWAR	ICWAR	
1400		2400	6000	
306°		306°	306°	
2.3 NM		3.1 NM	6 NM	
CATEGORY	A	B	C	D
LP MDA	1000-1 343 (400-1)			
LNAV MDA	1080-1 423 (400-1)		1080-1 1/4 423 (400-1 1/4)	
<b>C</b> CIRCLING	1220-1 536 (600-1)	1240-1 556 (600-1)	1440-2 1/4 756 (800-2 1/4)	1440-2 1/2 756 (800-2 1/2)

NC-3, 15 MAY 2025 to 12 JUN 2025

NC-3, 15 MAY 2025 to 12 JUN 2025