

WAAS CH <b>53427</b> <b>W18A</b>	APP CRS <b>179°</b>	Rwy ldg TDZE Apt Elev	<b>5500</b> <b>970</b> <b>979</b>
--	------------------------	-----------------------------	---

# RNAV (GPS) RWY 18

JAMES H CONNELL FLD AT INDEPENDENCE MUNI (IIB)

RNP APCH.

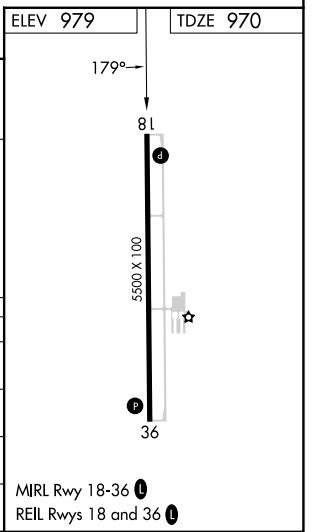
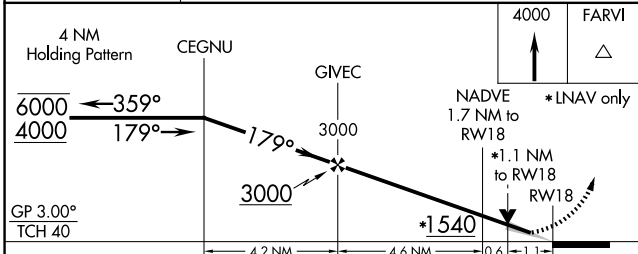
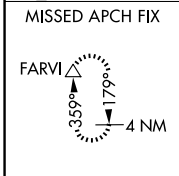
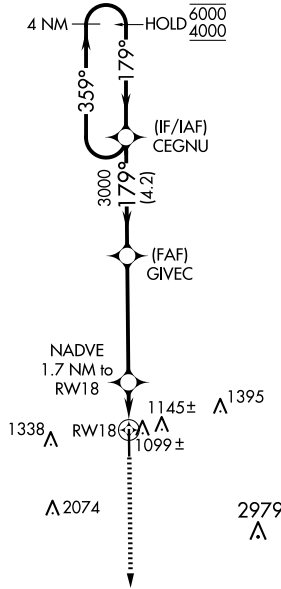
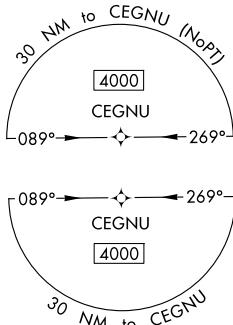
**▼** For uncompensated Baro-VNAV systems, LNAV/VNAV NA  
**▲** below -16°C or above 54°C .

**MISSED APPROACH:** Climb to 4000 direct FARVI and hold, continue climb-in-hold to 4000.

AWOS-3  
**120.825**

WATERLOO APP CON ★  
**118.9 251.15**

UNICOM  
**122.8 (CTAF) 0**



CATEGORY	A	B	C	D
LPV DA		1220-3/4	250 (300-3/4)	
LNAV/VNAV DA		1280-7/8	310 (400-7/8)	
LNAV MDA	1360-1	390 (400-1)	1360-1 1/8	390 (400-1 1/8)
<b>C</b> CIRCLING	1500-1	521 (600-1)	1700-2 721 (800-2)	2440-3 1461 (1500-3)

MIRL Rwy 18-36 **0**  
REIL Rwys 18 and 36 **0**

# RNAV (GPS) RWY 18

NC-3, 15 MAY 2025 to 12 JUN 2025

NC-3, 15 MAY 2025 to 12 JUN 2025