

WAAS CH 86732 W31A	APP CRS 314°	Rwy Idg TDZE Apt Elev	4602 1137 1137
--	------------------------	-----------------------------	---

RNAV (GPS) RWY 31

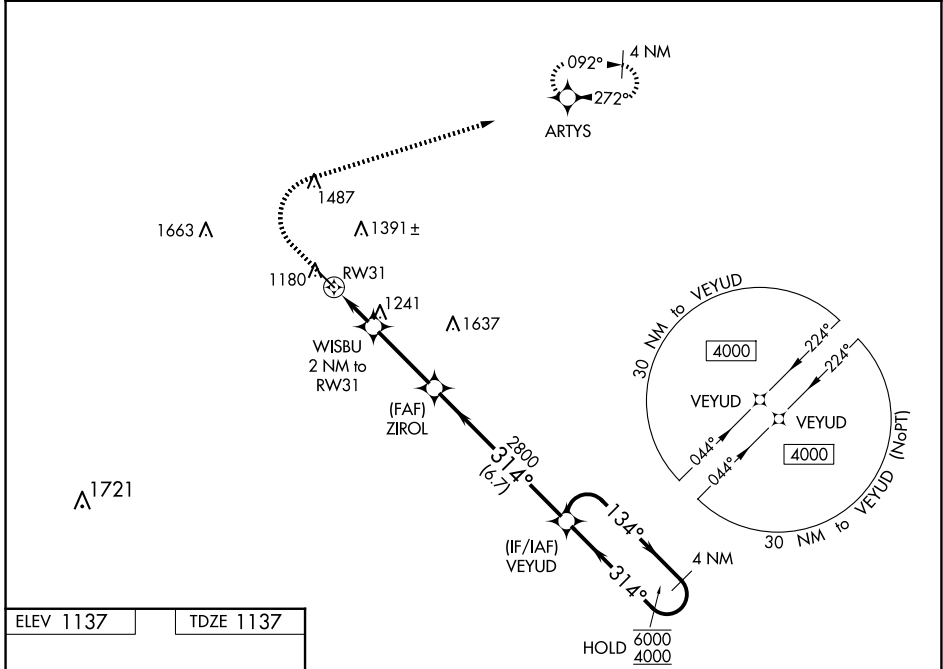
IOWA FALLS MUNI (IF'A)

RNP APCH - GPS.

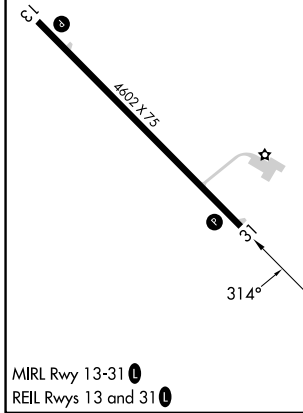
⚠ Rwy 31 helicopter visibility reduction below 1 SM NA. For uncompensated Baro-VNAV systems, LNAV/VNAV NA below -17°C or above 54°C. Straight-in Rwy 31 NA at night, Circling Rwy 31 NA at night.

⚠ MISSED APPROACH: Climb to 1600 then climbing right turn to 4000 direct ARTYS and hold, continue climb-in-hold to 4000.

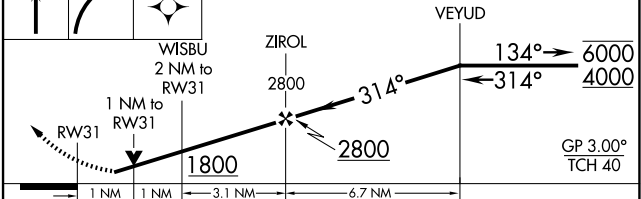
AWOS-3 120.425	WATERLOO APP CON ★ 118.9	UNICOM 122.8 (CTAF) 0
--------------------------	------------------------------------	---------------------------------



ELEV 1137	TDZE 1137
-----------	-----------



1600 4000 ARTYS VGSI and RNAV glidepath not coincident (VGSI Angle 3.00/TCH 44). 4 NM Holding Pattern



CATEGORY	A	B	C	D
LPV DA		1387-1	250 (300-1)	
LNAV/VNAV DA		1398-1	261 (300-1)	
LNAV MDA		1500-1	363 (400-1)	
C CIRCLING	1540-1 403 (500-1)	1620-1 483 (500-1)	1760-1¾ 623 (700-1¾)	1800-2 663 (700-2)

NC-3, 07 AUG 2025 to 04 SEP 2025

NC-3, 07 AUG 2025 to 04 SEP 2025