

WAAS CH 99644 W18A	APP CRS 180°	Rwy Idg TDZE Apt Elev	6001 1316 1316
--	------------------------	-----------------------------	---

RNAV (GPS) RWY 18

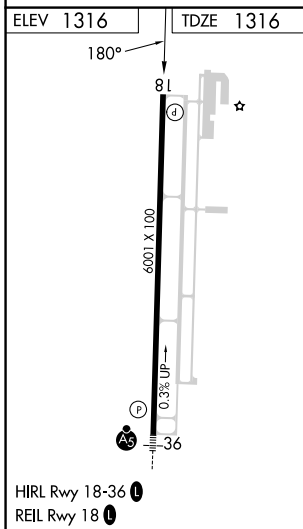
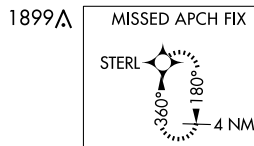
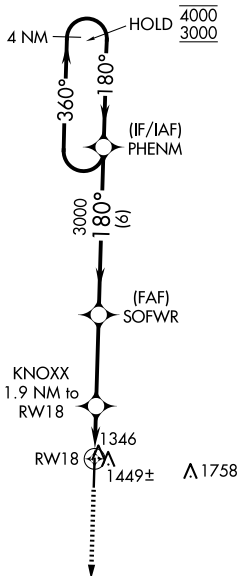
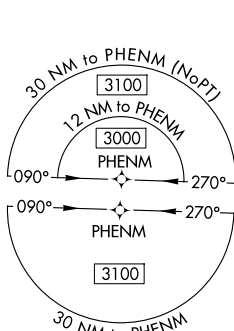
MONETT RGNL (HFJ)

RNP APCH - GPS.

⚠ Baro-VNAV and VDP NA when using Joplin altimeter setting. For uncompensated Baro-VNAV systems, LNAV/VNAV NA below -17°C or above 54°C. When local altimeter setting not received, use Joplin altimeter setting; increase LPV DA to 1678 feet and all visibilities ¼ SM; increase LNAV/VNAV DA to 1742 feet and all visibilities ⅜ SM; increase all MDAs 120 feet and LNAV visibility Cat C/D ¼ SM, and Circling visibility Cat C/D ½ SM.

MISSED APPROACH: Climb to 3100 direct STERL and hold.

AWOS-3 118.275	SPRINGFIELD APP CON 124.95 318.2	CLNC DEL 121.85	UNICOM 123.075 (CTAF) 📻
--------------------------	--	---------------------------	--



3100 STERL	SOFWR 3000	PHENM 4 NM Holding Pattern		
KNOXX 1.9 NM to RW18	1960	4000/3000		
RW18 1.1 NM	0.8	3.3 NM		
1.1 NM to RW18	0.8	6 NM		
GP 3.00° TCH 43				
CATEGORY	A	B	C	D
LPV DA		1566-¾	250 (300-¾)	
LNAV/VNAV DA		1630-⅞	314 (400-⅞)	
LNAV MDA	1700-1	384 (400-1)	1700-1½	384 (400-1½)
C CIRCLING	1760-1 444 (500-1)	1900-1 584 (600-1)	1900-1½ 584 (600-1½)	2060-2½ 744 (800-2½)

NC-3, 15 MAY 2025 to 12 JUN 2025

NC-3, 15 MAY 2025 to 12 JUN 2025