

APP CRS	Rwy Idg	<b>5000</b>
<b>309°</b>	TDZE	<b>1008</b>
	Apt Elev	<b>1008</b>

# RNAV (GPS) RWY 31

GRINNELL RGNL (GGI)

RNP APCH - GPS.

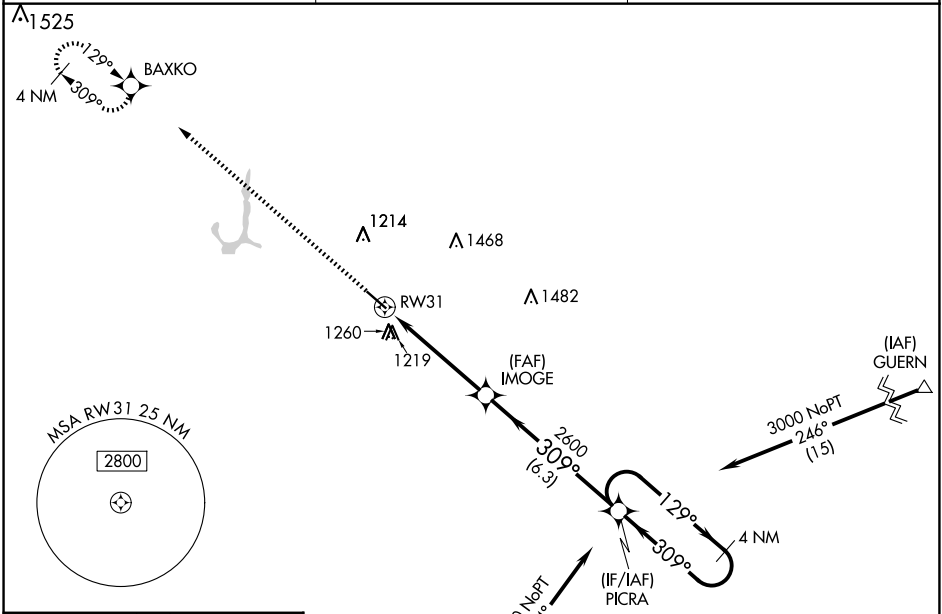
**⚠** When local altimeter setting not received, use Newton altimeter setting and increase all MDA 40 feet and LNAV visibility Cat C 1/8 SM. Rwy 31 helicopter visibility reduction below 3/4 SM NA. VDP NA when using Newton altimeter setting.

MISSED APPROACH: Climb to 3000 direct BAXKO and hold.

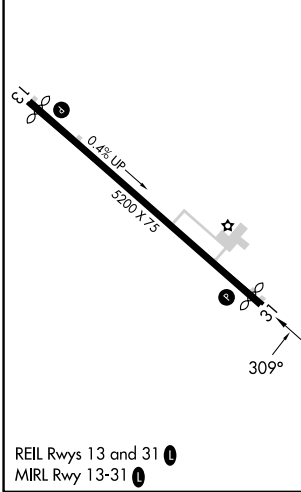
AWOS-3  
**120.725**

CHICAGO CENTER  
**127.05 282.35**

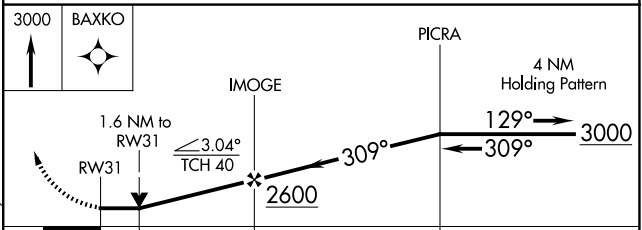
UNICOM  
**122.8 (CTAF)**



ELEV 1008      TDZE 1008



Procedure NA for arrivals at NASAL via V6-8 westbound.



CATEGORY	A	B	C	D
LNAV MDA	1560-1	552 (600-1)	1560-1 5/8 552 (600-1 5/8)	NA
CIRCLING	1620-1	612 (700-1)	1620-1 3/4 612 (700-1 3/4)	NA

NC-3, 15 MAY 2025 to 12 JUN 2025

NC-3, 15 MAY 2025 to 12 JUN 2025