

WAAS CH 86829 W21A	APP CRS 210°	Rwy Idg TDZE Apt Elev	5204 708 708
--	------------------------	-----------------------------	---

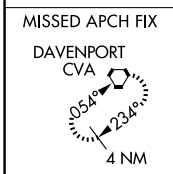
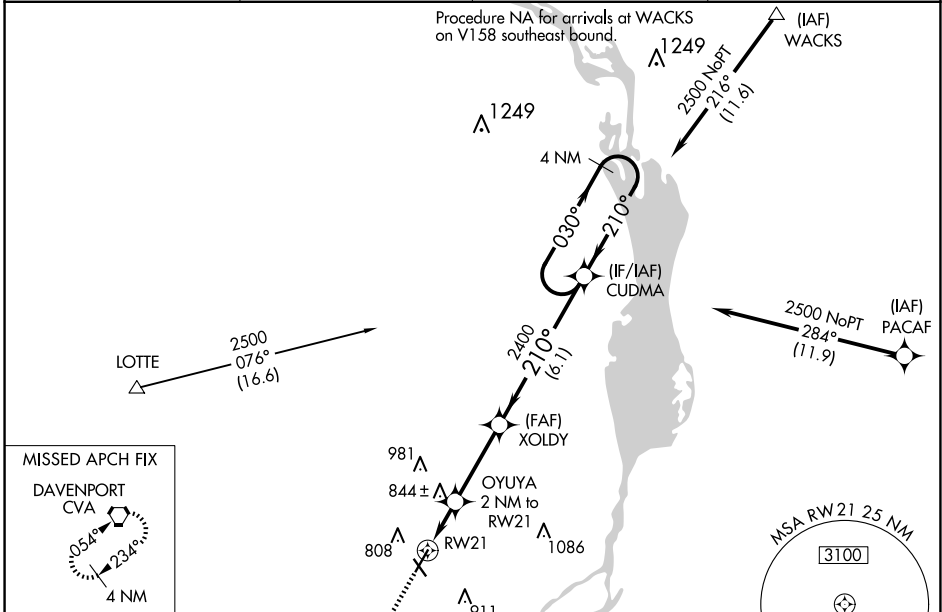
RNAV (GPS) RWY 21

CLINTON MUNI (CWI)

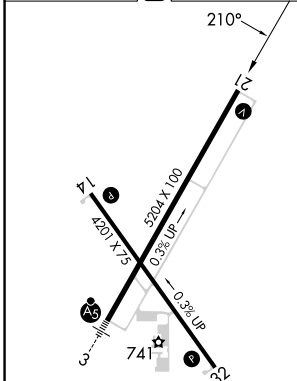
⚠ Rwy 21 helicopter visibility reduction below 3/4 SM NA. Baro-VNAV NA when using Davenport altimeter setting. For uncompensated Baro-VNAV systems, LNAV/VNAV NA below -16°C (4°F) or above 54°C (130°F). DME/DME RNP-0.3 NA. When local altimeter setting not received, use Davenport altimeter setting: increase all DA 47 feet and all MDA 60 feet. Increase LNAV Cat C visibility 1/4 mile.

MISSED APPROACH: Climb to 3000 direct WIKES and on track 234° to CVA VORTAC and hold.

AWOS-3PT 125.525	QUAD CITY APP CON * 125.95 257.8	CLNC DEL 118.5 0	CTAF 122.9
----------------------------	--	----------------------------	----------------------



ELEV 708	D	TDZE 708
----------	----------	----------



3000	WIKES	tr 234°	CVA	VGSI and RNAV glidepath not coincident (VGSI Angle 3.00/TCH 34).
				CUDMA 4 NM Holding Pattern
*LNAV only	OYUYA 2 NM to RWY 21	XOLDY 2400		
				GP 3.00° TCH 40

CATEGORY	A	B	C	D
LPV DA	958-1	250 (300-1)		NA
LNAV/VNAV DA	958-1	250 (300-1)		NA
LNAV MDA	1100-1	392 (400-1)	1100-1 1/8 392 (400-1 1/8)	NA
C CIRCLING	1140-1 432 (500-1)	1240-1 532 (600-1)	1240-1 1/2 532 (600-1 1/2)	NA

- REIL Rwy 14 and 21 **Ⓛ**
- MIRL Rwy 14-32 **Ⓛ**
- HIRL Rwy 3-21 **Ⓛ**

NC-3, 15 MAY 2025 to 12 JUN 2025

NC-3, 15 MAY 2025 to 12 JUN 2025