

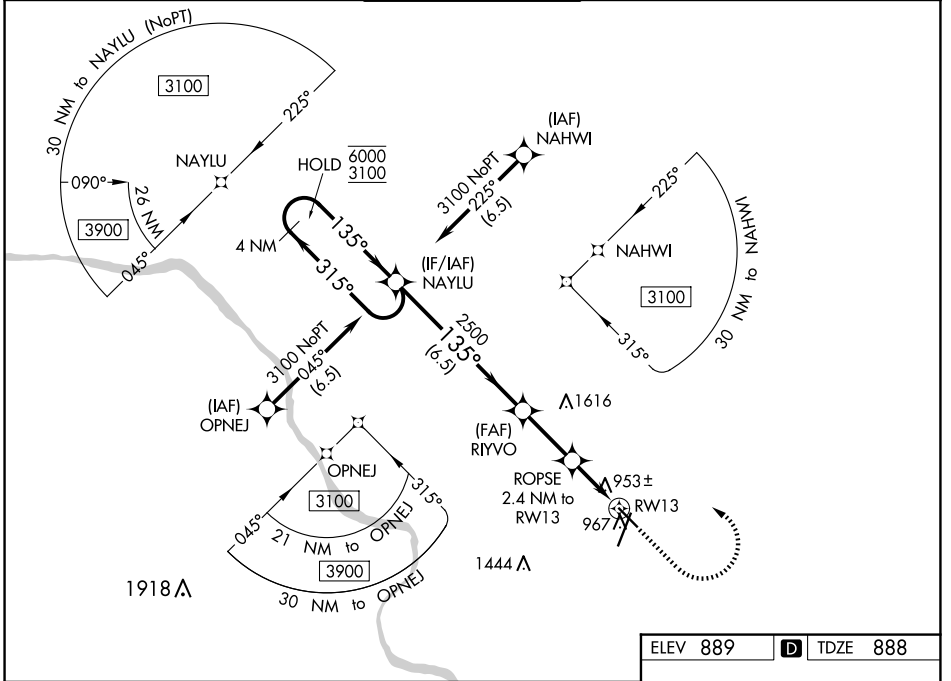
WAAS CH <b>40042</b> <b>W13A</b>	APP CRS <b>135°</b>	Rwy Idg TDZE Apt Elev	<b>5500</b> <b>888</b> <b>889</b>
----------------------------------------	------------------------	-----------------------------	-----------------------------------------

# RNAV (GPS) RWY 13

COLUMBIA RGNL (COU)

RNP APCH.	MISSED APPROACH: Climb to 2000 then climbing left turn to 3100 direct NAYLU and hold.
<p><b>▼</b> Circling NA for Cat D west of Rws 2 and 13. Circling Rwy 20 NA at night. For <b>▲</b> uncompensated Baro-VNAV systems, LNAV/VNAV NA below -17°C or above 54°C.</p>	

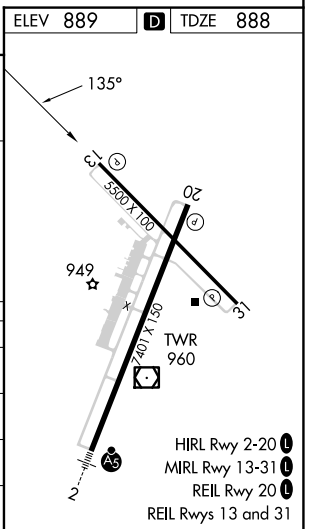
ATIS <b>128.45</b>	MIZU APP CON <b>124.375 353.925</b>	<b>COLUMBIA TOWER *</b> <b>119.3 (CTAF) 363.25</b>	GND CON <b>121.6</b>	UNICOM <b>122.95</b>
-----------------------	----------------------------------------	-------------------------------------------------------	-------------------------	-------------------------



NC-3, 15 MAY 2025 to 12 JUN 2025

NC-3, 15 MAY 2025 to 12 JUN 2025

4 NM Holding Pattern		NAYLU	RIYVO	2000	3100	NAYLU
6000 ← 315°		3100 → 135°	2500	↑	↻	✧
GP 3.00°		*1680		*LNAV only		
TCH 45		ROPSE 2.4 NM to RW13		*0.9 NM to RW13		
		*1680		RW13		
		6.5 NM		2.5 NM		1.5 NM
						0.9
CATEGORY	A	B	C	D		
LPV DA		1139-1	251 (300-1)			
LNAV/VNAV DA		1139-1	251 (300-1)			
LNAV MDA		1220-1	332 (400-1)			
<b>C</b> CIRCLING	1300-1 411 (500-1)	1340-1 451 (500-1)	1360-1½ 471 (500-1½)	1440-2 551 (600-2)		



- HIRL Rwy 2-20 **①**
- MIRL Rwy 13-31 **①**
- REIL Rwy 20 **①**
- REIL Rws 13 and 31 **①**