

LOC/DME I-RRU 111.3 Chan 50	APP CRS 269°	Rwy Idg TDZE Apt Elev	8175 862 869
--	------------------------	-----------------------------	---

ILS or LOC RWY 27

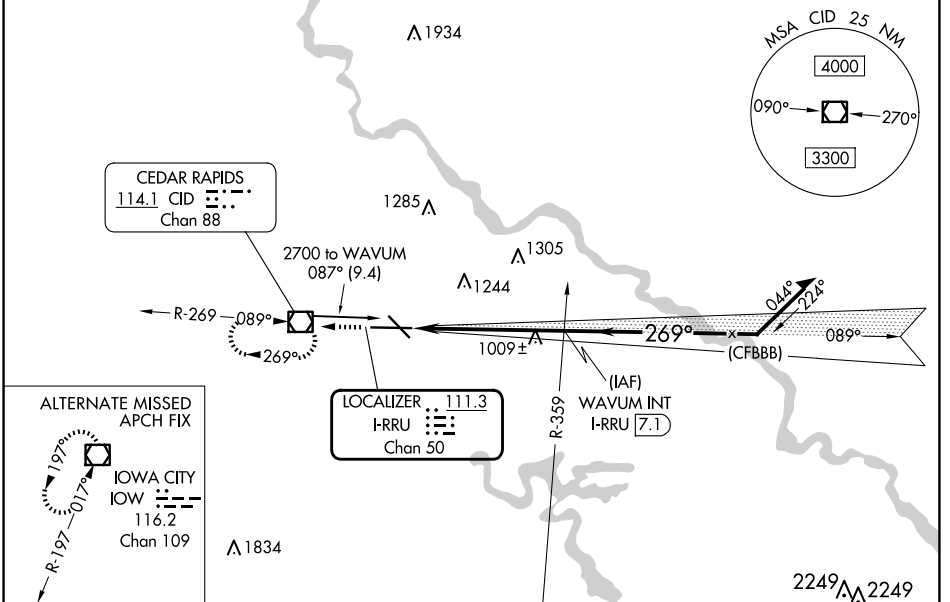
THE EASTERN IOWA (CID)

⚠ VDP NA with Iowa City altimeter setting. Autopilot coupled approach NA below 1910.
⚠ When local altimeter setting not received, use Iowa City altimeter setting: increase DA to 1126 feet; increase all MDA 80 feet, increase S-LOC Cat C and D visibility to RVR 5000, and Circling Cat C and D visibility ¼ SM.
 #RVR 1800 authorized with use of FD or HUD to DA (NA when using Iowa City altimeter setting).

MALSR

MISSED APPROACH: Climb to 2900 direct CID VOR/DME and hold, continue climb-in-hold to 2900.

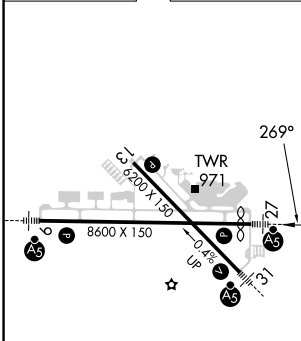
ATIS 124.15	CEDAR RAPIDS APP CON* 119.7 266.8	CEDAR RAPIDS TOWER* 118.7 (CTAF) 266.8	GND CON 121.6	CLNC DEL 125.45	UNICOM 122.95
-----------------------	---	--	-------------------------	---------------------------	-------------------------



ALTERNATE MISSED APCH FIX

IOWA CITY IOW
116.2
Chan 109

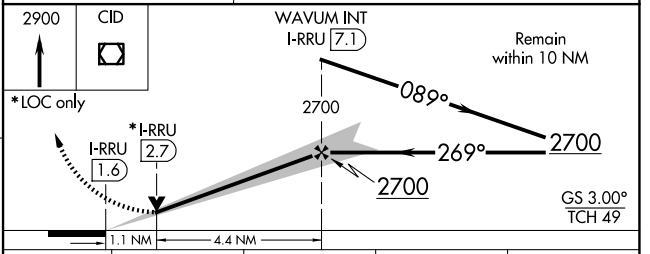
ELEV 869	D	TDZE 862
----------	----------	----------



MIRL Rwy 13-31 **1**
 HIRL Rwy 9-27 **1**
 REIL Rwy 13

FAF to MAP 5.5 NM

Knots	60	90	120	150	180
Min:Sec	5:30	3:40	2:45	2:12	1:50



CATEGORY	A	B	C	D
S-ILS 27 #	1062/24 200 (200-½)			
S-LOC 27	1260/24	398 (400-½)	1260/35	398 (400-¾)
CIRCLING	1280-1 411 (500-1)	1320-1 451 (500-1)	1560-2 691 (700-2)	1560-2¼ 691 (700-2¼)

THE EASTERN IOWA (CID)

ILS or LOC RWY 27

NC-3, 15 MAY 2025 to 12 JUN 2025

NC-3, 15 MAY 2025 to 12 JUN 2025