


LOC I-CID 109.3	APP CRS 089°	Rwy Idg TDZE Apt Elev	8175 857 869
---------------------------	------------------------	-----------------------------	---

ILS or LOC RWY 9

THE EASTERN IOWA (CID)

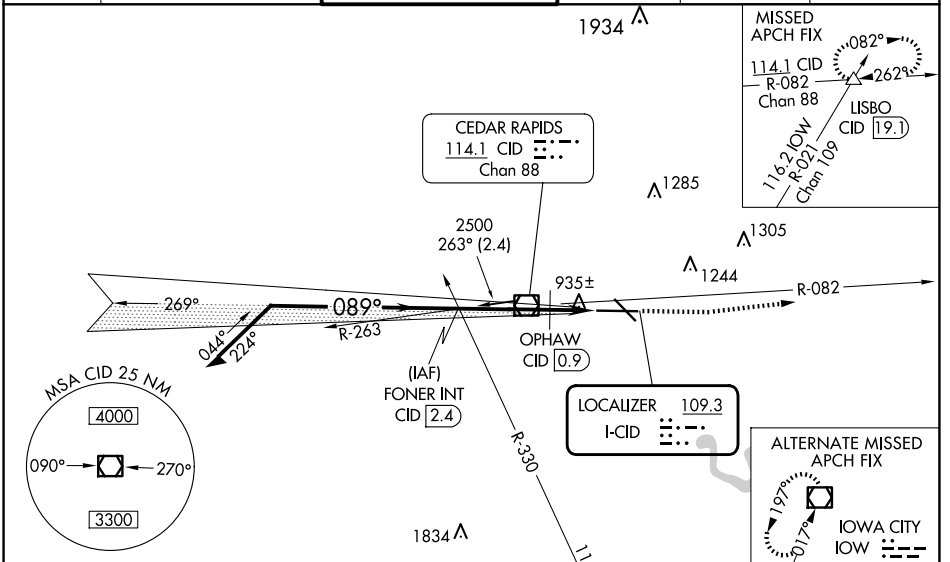
⚠ When local altimeter setting not received, use Iowa City altimeter setting and increase all DA 64 feet and all MDA 80 feet; increase S-LOC Cat D visibility to RVR 6000. OPHAW fix minimums: increase S-LOC Cat C visibility to RVR 4000 and Cat D to RVR 6000. When using Iowa City altimeter setting, for inop MALSR, increase S-ILS 9 all Cats visibility to RVR 5000. Autopilot coupled approach NA below 1100 MSL.
RVR 1800 authorized with use of FD or HUD to DA (NA when using Iowa City altimeter setting).

MALSR

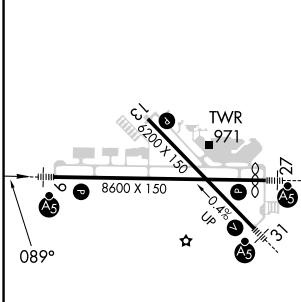


MISSED APPROACH: Climb to 1400 then climb to 2700 via CID VOR/DME R-082 to LISBO/CID VOR/DME 19.1 DME and hold.

ATIS 124.15	CEDAR RAPIDS APP CON* 119.7 266.8	CEDAR RAPIDS TOWER* 118.7 (CTAF) 266.8	GND CON 121.6	CLNC DEL 125.45	UNICOM 122.95
-----------------------	---	--	-------------------------	---------------------------	-------------------------



ELEV 869	D	TDZE 857
----------	----------	----------



* 1440 when using Iowa City altimeter setting.

Remain within 10 NM

2500 — 089° — 2500

FONER INT CID 2.4

CID VOR/DME

OPHAW CID 0.9

CID 2.5

* 1360

1400

2700

LISBO Δ

IOWA CITY IOW 116.2 Chan 109

* LOC only

GS 3.00° TCH 49

VGSI and ILS glidepath not coincident (VGSI Angle 3.00/TCH 60).

3.3 NM

1.7 NM

CATEGORY	A	B	C	D
S-ILS 9#	1057/24 200 (200-½)			
S-LOC 9	1360/24 503 (500-½)		1360/50 503 (500-1)	
OPHAW FIX MINIMUMS				
S-LOC 9	1220/24 363 (400-½)		1220/40 363 (400-¾)	

FAF to MAP 5 NM					
Knots	60	90	120	150	180
Min:Sec	5:00	3:20	2:30	2:00	1:40

CEDAR RAPIDS, IOWA
Amdt 18E 07NOV19

41°53'N-91°43'W

THE EASTERN IOWA (CID)

ILS or LOC RWY 9

NC-3, 15 MAY 2025 to 12 JUN 2025

NC-3, 15 MAY 2025 to 12 JUN 2025