

| | | |
|--|------------------------|---|
| WAAS CH 82438 W30A | APP CRS 305° | Rwy Idg 4000 TDZE 1121 Apt Elev 1125 |
|--|------------------------|---|

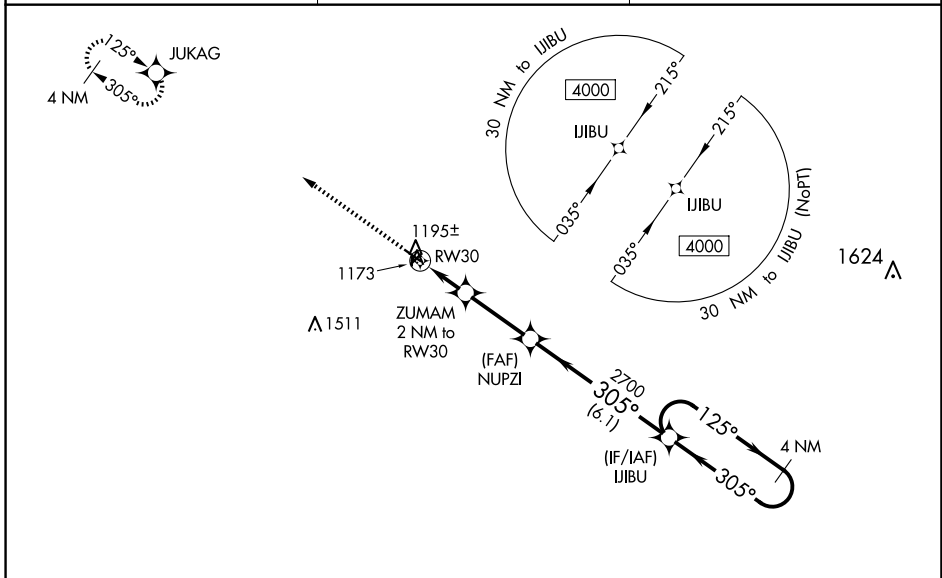
RNAV (GPS) RWY 30

NORTHEAST IOWA RGNL (CCY)

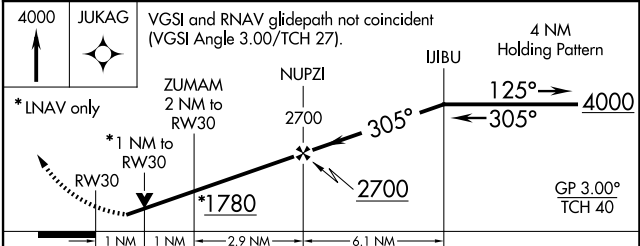
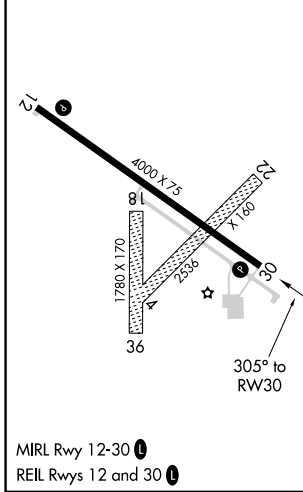
⚠ For uncompensated Baro-VNAV systems, LNAV/VNAV NA below -17°C (2°F) or above 54°C (130°F). DME/DME RNP-0.3 NA. Helicopter visibility reduction below 3/4 SM NA. When local altimeter setting not received, use Waterloo altimeter setting and increase all DA 110 feet and visibility 1/4 mile. Increase all MDA 120 feet, increase LNAV Cat C visibility 3/8 mile, and Circling visibility Cat C 1/2 mile. VDP and Baro-VNAV NA when using Waterloo altimeter setting. Circling Rwy 4-22 and 18-36 NA.

MISSED APPROACH: Climb to 4000 direct JUKAG and hold, continue climb-in-hold to 4000.

| | | |
|--------------------------|---|-------------------------------|
| AWOS-3 125.525 | WATERLOO APP CON ★ 118.9 251.15 | UNICOM 122.8 (CTAF) |
|--------------------------|---|-------------------------------|



| | |
|-----------|-----------|
| ELEV 1125 | TDZE 1121 |
|-----------|-----------|



| CATEGORY | A | B | C | D |
|-------------------|-----------------------|-----------------------|-------------------------------|----|
| LPV DA | 1371-1 | 250 (300-1) | | NA |
| LNAV/VNAV DA | 1371-1 | 250 (300-1) | | NA |
| LNAV MDA | 1460-1 | 339 (400-1) | | NA |
| C CIRCLING | 1520-1 395 (400-1) | 1580-1 455 (500-1) | 1760-1 3/4 635 (700-1 3/4) | NA |

NC-3, 07 AUG 2025 to 04 SEP 2025

NC-3, 07 AUG 2025 to 04 SEP 2025